

# RoHS

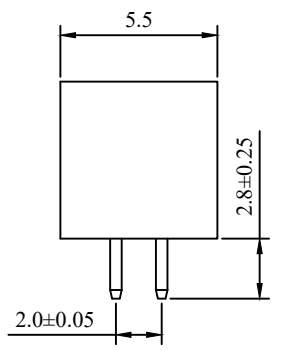
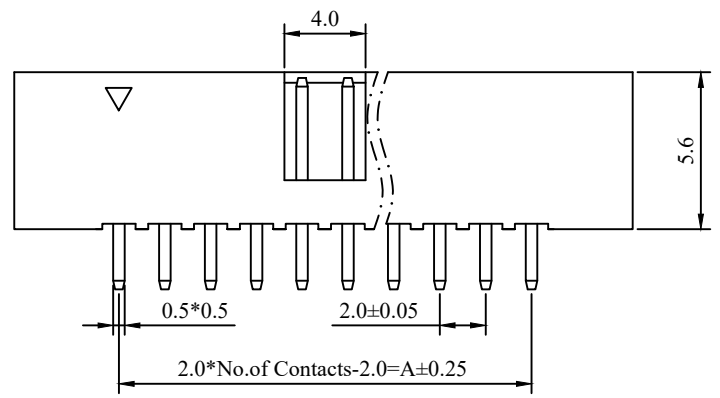
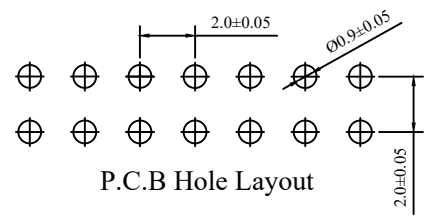
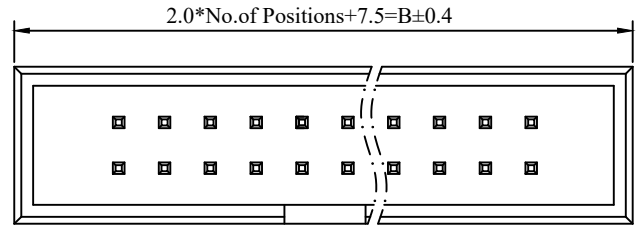
REV	ECN NO.	DESCRIPTION	DESIGN	APPROVAL	DATE
A1	NEW	更换图框			2023.11.25

**SPECIFICATIONS**  
 1.Current rating: 2A AC, DC  
 2.Voltage rating: 250V AC,DC  
 3.Temperature range: -40°C ~ +105°C  
 4.Insulation resistance: 1000MΩ Min.  
 5.Withstanding voltage: 500V AC/ minute.  
 6.Contact resistance: 20mΩ Max.  
 Max.Processing Temp:240C°-260C°for30-60seconds  
 (260C°for 10 seconds)

**Material:**  
 Insulator: PA6T UL 94V-0 Black  
 Contact: Brass/Matte-tin plated Gold-Flash  
 Mate with PM200 /I200 series

**Ordering Code:**  
**BH200V-xxP**  
 1 2  
 1.序列号  
 2.Pin位数:10P=2x05P

No. of Pins/Row	Dimension	
	A	B
06	4.0	13.5
08	6.0	15.5
10	8.0	17.5
12	10.0	19.5
14	12.0	21.5
16	14.0	23.5
18	16.0	25.5
20	18.0	27.5
24	22.0	31.5
26	24.0	33.5
30	28.0	37.5
34	32.0	41.5
40	38.0	47.5
44	42.0	51.5
50	48.0	57.5
68	66.0	75.5



X.±0.50	X.°±	PART NO: BH200V-xxP	<b>XFCN 兴飞连接器</b>			
.X±0.25	.X°±					
.XX±0.15	.XX°±	TITLE: 2.00mm简易牛角 双排 DIP 180°	0769-82001899			
.XXX±0.10	.XXX°±		www.xfconn.com			
UNITS:	mm	APPD CHKD DRAW DATE	DWG NO: /			
THESE DRAWINGS AND SPECIFICATIONS ARE THE PROPERTY OF XFCN AND SHALL NOT BE REPRODUCED, COPIED OR CUED IN ANY MANNER WITHOUT THE PRIOR WRITTEN CONSENT OF XFCN			Wang	VIEW		
			2024.01.30	SCALE	SHEET	REV
				NONE	1:1	A1

## X-ON Electronics

Largest Supplier of Electrical and Electronic Components

*Click to view similar products for [I/O Connectors](#) category:*

*Click to view products by [XFCN](#) manufacturer:*

Other Similar products are found below :

[571763P](#) [59811-0000](#) [61-168618-12P](#) [D20419-211](#) [D38999/20FJ24PA L/C](#) [76871-1403](#) [PCR-E36PM](#) [PCS-XE26LKA](#) [PCS-XES68MS+](#)  
[G38A71314B](#) [DX40-50P\(55\)](#) [1571250010](#) [157-22500-3](#) [MS3471L14-19P L/C](#) [192991-0703](#) [FCN-260C008-A/L0](#) [FCN-260C024-AL0](#) [FCN-](#)  
[261Z008](#) [2000314-1](#) [200331-1](#) [PCS-E28FS+](#) [PCS-XE26SLFD+](#) [PCS-XE26SLFDT+](#) [G730VID08BDC24](#) [HDR-E14MSG1+](#) [54182-0605](#)  
[UE86K842720321](#) [38113800006](#) [DP3AR020WQ1R200](#) [DRA-26PC-F0R](#) [Z4.102.0680.0](#) [500-1040](#) [500-1052](#) [DX40-20P\(55\)](#) [5554841-1](#)  
[SM3100F14S-12P](#) [U90B3054061110](#) [U65-E04-4020](#) [557-262M2-06C](#) [60-042222-02S](#) [10099439-003C-TRLF](#) [226-0348-000](#) [10137239-](#)  
[0011LF](#) [70.060.1028.0](#) [109029-ZZ](#) [HDR-E26MG1+](#) [SO-0715-02-01-02](#) [GT1-DA04CST](#) [231-303](#) [MS3112E16-8SX](#)