

RoHS

REV	ECN NO.	DESCRIPTION	DESIGN	APPROVAL	DATE
A1	NEW	更换图框			2023.11.25

SPECIFICATIONS

- 1.Current rating: 2A AC, DC
 - 2.Voltage rating: 250V AC,DC
 - 3.Temperature range: -40°C ~ +105°C
 - 4.Insulation resistance: 1000MΩ Min.
 - 5.Withstanding voltage: 500V AC/ minute.
 - 6.Contact resistance: 20mΩ Max.
- Max.Processing Temp:240C°-260C°for30-60seconds
(260C°for 10 seconds)

Material:

Insulator: PA6T UL 94V-0 Black
Contact: Brass/Matte-tin plated Gold-Flash
Mate with PM200 /I200 series

Ordering Code:

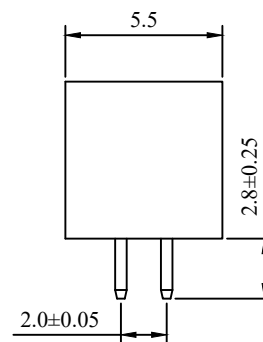
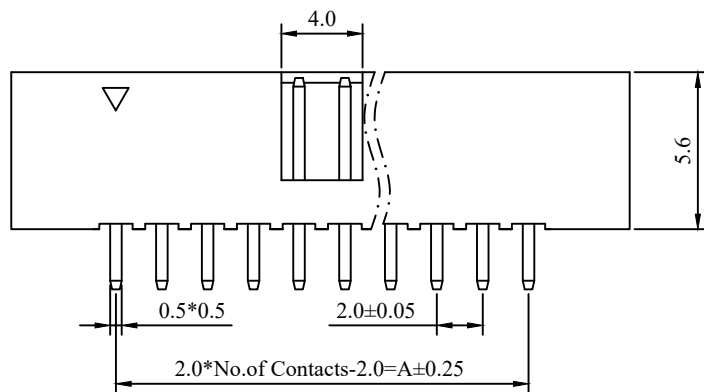
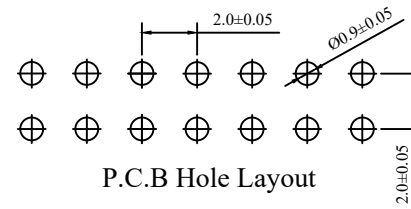
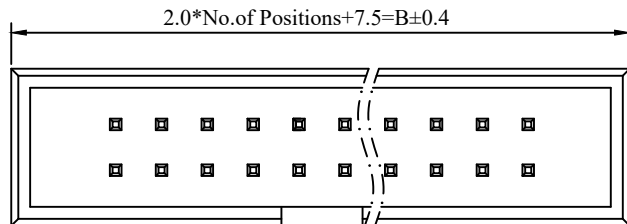
BH200V-xxP

1 2

1.序列号

2.Pin位数:10P=2x05P

No. of Pins/Row	Dimension	
	A	B
06	4.0	13.5
08	6.0	15.5
10	8.0	17.5
12	10.0	19.5
14	12.0	21.5
16	14.0	23.5
18	16.0	25.5
20	18.0	27.5
24	22.0	31.5
26	24.0	33.5
30	28.0	37.5
34	32.0	41.5
40	38.0	47.5
44	42.0	51.5
50	48.0	57.5
68	66.0	75.5



X.±0.50	X.°±
.X±0.25	.X°±
.XX±0.15	.XX°±
.XXX±0.10	.XXX°±
UNITS:	mm

THESE DRAWINGS AND SPECIFICATIONS ARE THE PROPERTY OF XFCN AND SHALL NOT BE REPRODUCED, COPIED OR CUED IN ANY MANNER WITHOUT THE PRIOR WRITTEN CONSENT OF XFCN

PART NO: BH200V-xxP	
TITLE: 2.00mm简易牛角 双排 DIP 180°	
APPD	
CHKD	
DRAW	Wang
DATE	2024.01.30

XFCN 兴飞连接器

0769-82001899
www.xfconn.com
DWG NO: /

VIEW	
SCALE	NONE
SHEET	1:1
REV	A1

X-ON Electronics

Largest Supplier of Electrical and Electronic Components

Click to view similar products for [I/O Connectors](#) category:

Click to view products by [XFCN](#) manufacturer:

Other Similar products are found below :

[571763P](#) [59811-0000](#) [61-168618-12P](#) [D20419-211](#) [D38999/20FJ24PA L/C](#) [76871-1403](#) [PCR-E36PM](#) [PCS-XE26LKA](#) [PCS-XES68MS+](#)
[G38A71314B](#) [DX40-50P\(55\)](#) [1571250010](#) [157-22500-3](#) [MS3471L14-19P L/C](#) [192991-0703](#) [FCN-260C008-A/L0](#) [FCN-260C024-AL0](#) [FCN-](#)
[261Z008](#) [2000314-1](#) [200331-1](#) [PCS-E28FS+](#) [PCS-XE26SLFD+](#) [PCS-XE26SLFDT+](#) [G730VID08BDC24](#) [HDR-E14MSG1+](#) [54182-0605](#)
[UE86K842720321](#) [38113800006](#) [DP3AR020WQ1R200](#) [DRA-26PC-F0R](#) [Z4.102.0680.0](#) [500-1040](#) [500-1052](#) [DX40-20P\(55\)](#) [5554841-1](#)
[SM3100F14S-12P](#) [U90B3054061110](#) [U65-E04-4020](#) [557-262M2-06C](#) [60-042222-02S](#) [10099439-003C-TRLF](#) [226-0348-000](#) [10137239-](#)
[0011LF](#) [70.060.1028.0](#) [109029-ZZ](#) [HDR-E26MG1+](#) [SO-0715-02-01-02](#) [GT1-DA04CST](#) [231-303](#) [MS3112E16-8SX](#)