

ROHS

MATERIAL LIST

TEL: 0769-82001899

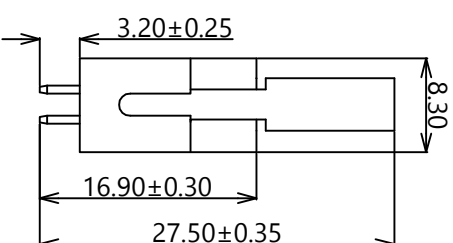
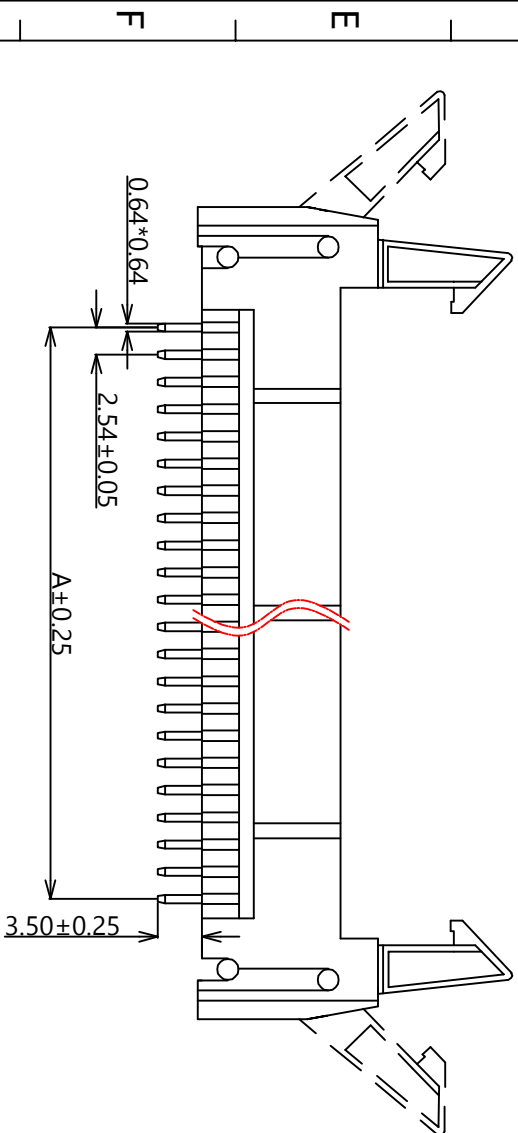
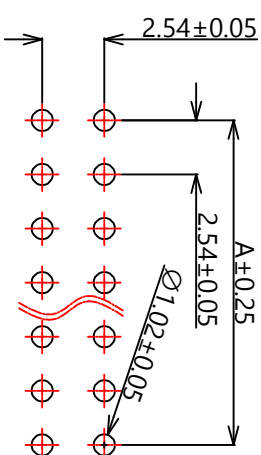
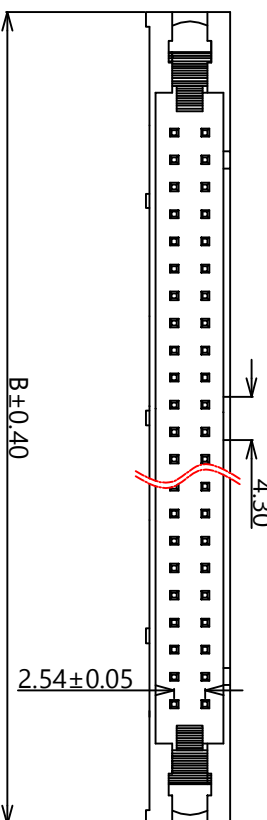
VER: A0
DESCRIBE: 新图框编制

NATE: 2020/08/29

DRAWN: 姜光鸿

NO.	PART	MATERIAL	COATING/COLOR	QTY
1	HOUSING	PBT UL94V-0	BLACK	1
2	TERMINALS	BRASS	PLATING GOLD	N

料号释义:	EH	254	V	12	XX	X	X	X
EH=牛角	127=1.27间距	焊板角度:	产品类型:	XX=Pin位	耳朵区分:	材	质	镀
100=1.00间距	V=直插	12=单塑双排	routine=A	routine=PBT	0=G/F	2=Au2U"	3=Au3U"	5=Au5U"
200=2.00间距	R=弯插	A=长耳	B=短耳	L=LCP	6=PA6T	9=PA9T		
254=2.54间距	VS=立贴	RS=贴						



PIN	Dimensions(mm)	
	A	B
06	5.08	26.82
08	7.62	29.36
10	10.16	31.90
14	15.24	36.98
16	17.78	39.52
18	20.32	42.06
20	22.86	44.80
24	27.94	49.68
26	30.48	52.22
30	35.56	57.30
34	40.64	62.38
40	48.26	70.00
50	60.96	82.70
60	73.66	95.40
64	78.74	100.48

TOLERANCE UNLESS OTHERWISE

X. ±0.30	X° ±5°
.X ±0.20	.X° ±2°
.XX ±0.08	.XX° ±1°
.XXX ±0.03	.XXX° ±0.5°

UNIT	mm
VIEW	1:1
SCALE	1:1
NUMBER	XF-EH001

XF 兴飞连接器有限公司
FCN XFCN CONNECTORS CO., LTD.

TYPE	2.54mm pin horn connector
PART.NO.	EH254V-12-XXP

DRAWN	姜光鸿
CHKD	
APPD	
DATE	2020/08/29

X-ON Electronics

Largest Supplier of Electrical and Electronic Components

Click to view similar products for [I/O Connectors](#) category:

Click to view products by [XFCN](#) manufacturer:

Other Similar products are found below :

[571763P](#) [59811-0000](#) [61-168618-12P](#) [D20419-211](#) [76871-1403](#) [PCR-E36PM](#) [PCS-XE26LKA](#) [PCS-XES68MS+](#) [G38A71314B](#) [DX40-50P\(55\)](#) [1571250010](#) [157-22500-3](#) [MS3471L14-19P L/C](#) [192991-0703](#) [91-569786-35H](#) [FCN-260C008-A/L0](#) [FCN-260C024-AL0](#) [FCN-261Z008](#) [2000314-1](#) [200331-1](#) [PCS-E28FS+](#) [PCS-XE26SLFD+](#) [PCS-XE26SLFDT+](#) [G730VID08BDC24](#) [HDMR-29-01-S-SM-TR](#) [HDR-E14MSG1+](#) [54182-0605](#) [UE86K842720321](#) [38113800006](#) [DP3AR020WQ1R200](#) [DRA-26PC-F0R](#) [Z4.102.0680.0](#) [500-1040](#) [500-1052](#) [ZP-4008-66L](#) [10-565995-597N](#) [10-584459-12P](#) [DX40-20P\(55\)](#) [5554841-1](#) [SM3100F14S-12P](#) [SM3106F14S-7S-LC](#) [SM3106R18-18S](#) [U90B3054061110](#) [U65-E04-4020](#) [557-262M2-06C](#) [PCS-96LFD+](#) [60-042222-02S](#) [10099439-003C-TRLF](#) [226-0348-000](#) [10137239-0021LF](#)