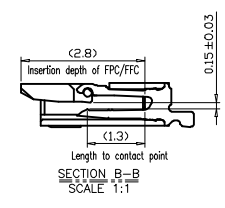
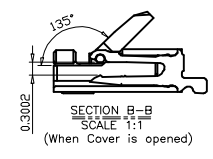
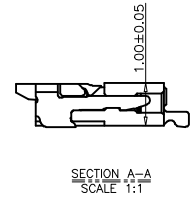
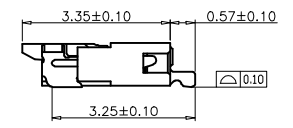
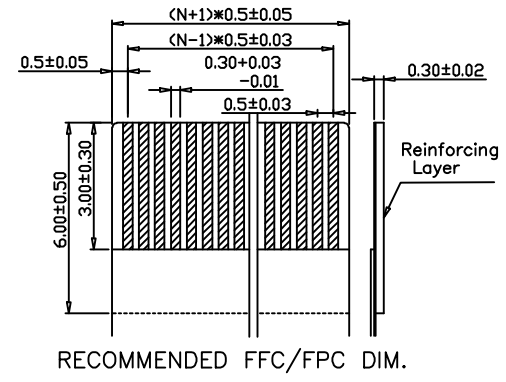
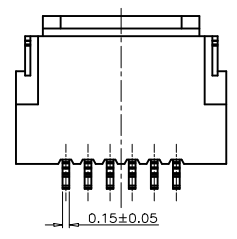
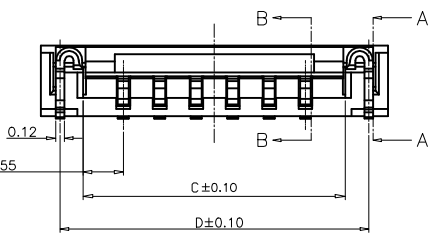
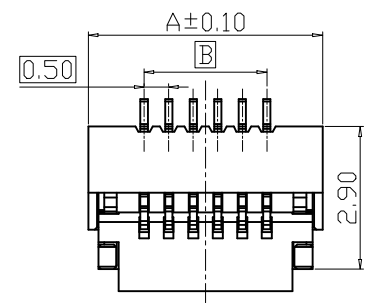
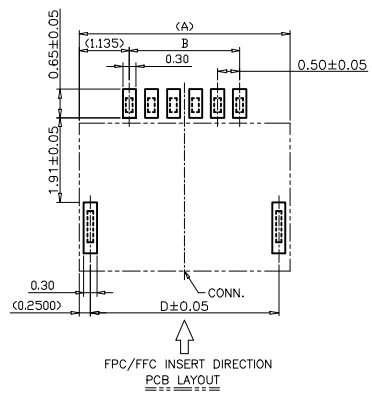


Electrical Characteristics:
 Current rating: 0.4A AC/DC
 Voltage rating: 50V AC/DC
 Temperature range: -25°C~+85°C
 Withstand Voltage: 200V AC/Minute
 Contact Resistance: ≤ 20mΩ
 Insulation resistance: 500mΩ
 Relative Humidity: 93%+40°C

Material Description:
 Terminal: Phosphor Bronze Tin-Plated
 Fitting Nail: Brass Tin-plated
 Housing: Thermoplastic(UL94V-0)
 Slider: Thermoplastic(UL94V-0)



| PIN数 | 已开模 PIN | A | B | C | D |
|------|---------|-------|-------|-------|-------|
| 40 | V | 21.77 | 19.50 | 20.60 | 21.27 |
| 39 | V | 21.27 | 19.00 | 20.10 | 20.77 |
| 32 | V | 17.77 | 15.50 | 16.60 | 17.27 |
| 30 | V | 16.77 | 14.50 | 15.60 | 16.27 |
| 28 | V | 15.77 | 13.50 | 14.60 | 15.27 |
| 26 | V | 14.77 | 12.50 | 13.60 | 14.27 |
| 24 | V | 13.77 | 11.50 | 12.60 | 13.27 |
| 21 | V | 12.27 | 10.00 | 11.10 | 11.77 |
| 20 | V | 11.77 | 9.50 | 10.60 | 11.27 |
| 18 | V | 10.77 | 8.50 | 9.60 | 10.27 |
| 16 | V | 9.77 | 7.50 | 8.60 | 9.27 |
| 14 | V | 8.77 | 6.50 | 7.60 | 8.27 |
| 12 | V | 7.77 | 5.50 | 6.60 | 7.27 |
| 10 | V | 6.77 | 4.50 | 5.60 | 6.27 |
| 9 | V | 6.27 | 4.00 | 5.10 | 5.77 |
| 8 | V | 5.77 | 3.50 | 4.60 | 5.27 |
| 6 | V | 4.77 | 2.50 | 3.60 | 4.27 |
| 5 | V | 4.27 | 2.00 | 3.10 | 3.77 |

| | | | | |
|------------|------------|-----------|-----------|------------|
| 4-50 | N*0.5+1.77 | (N-1)*0.5 | N*0.5+0.6 | N*0.5+1.27 |
| Pin No.(N) | A | B | C | D |

| | | | | | | | | | | | | | | |
|-----------|--------------|------|------|----------------------------|-------|-------|--------|--|----------------------|---------|-----|------|-------|-------------|
| A0 VER | MODIFICATION | DRAW | DATE | TOLERANCE UNLESS OTHERWISE | | DRAWN | CK tan | XFCN兴飞连接器有限公司 CONNECTORS XFCN CONNECTORS CO., LTD. | | SHEET | 1/1 | | | |
| | | | | X. | ±0.30 | | | | | X° | ±5° | CHKD | DATE | 2010. 4. 12 |
| | | | | .X | ±0.20 | | | | | .X° | ±2° | APPD | UNITS | mm |
| | | | | .XX | ±0.08 | | | | | .XX° | ±1° | VIEW | SCALE | 1:1 |
| | | | | .XXX | ±0.03 | .XXX° | ±0.5° | PRODUCT NAME | FPC 0.50mm Connector | DWG NO. | 009 | | | |
| | | | | | | | | PART. NO. | F0502-B-XX-10G | | | | | |

X-ON Electronics

Largest Supplier of Electrical and Electronic Components

Click to view similar products for [FFC & FPC Connectors](#) category:

Click to view products by [XFCN](#) manufacturer:

Other Similar products are found below :

[HFW11R-1STE1H1LF](#) [FH29B-100S-0.2SHW\(99\)](#) [FA5S008HP1](#) [FH29B-120S-0.2SHW\(99\)](#) [FH29B-80S-0.2SHW\(99\)](#) [FHS-16](#) [FPH-2022G](#)
[52610-1075](#) [52610-1275](#) [52610-1934](#) [XF3M\(1\)-1415-1B-R100](#) [501864-3091-TR225](#) [0525594033](#) [086210010340800](#) [086222026001800](#)
[52271-2869-CUT-TAPE](#) [62674-201121DLF](#) [62684-36210E9ALF](#) [52610-1675](#) [52746-1671-TR250](#) [10051922-2810EHLF](#) [6-520415-9](#)
[BD021-09A-A1-0350-0200-0550-LD](#) [SFV6R-1STE9HLF](#) [XF3M-2915-1B-R100](#) [1658549-1](#) [62674-221121ALF](#) [46214008010800](#)
[046298003000883](#) [151660622](#) [842-816-2630-035](#) [AYF530665TA](#) [AYF351525](#) [046296011930846+](#) [AYF352325A](#) [046254020000800+](#)
[FH19C-13S-0.5SH\(99\)](#) [FH39J-51S-0.3SHW\(99\)](#) [AYF355125A](#) [AYF530365TA](#) [FH29B-44S-0.2SHW\(99\)](#) [SFW5R-2STAE9LF](#) [AYF351125A](#)
[AYF350725A](#) [62684-502100AHLF](#) [FH39-61S-0.3SHW\(99\)](#) [AYF414035A](#) [10064555-172520HLF](#) [AYF212335A](#) [504754-2500](#)