

环保物料

TEL:0769-82001899

Technical Data

Material:

Pin(outer sleeve):Brass,machined CuZn38Pb2

Plating(outer sleeve):

Tin Plated:2μm/80μm"NI, 5μm/200μ"Sn

Gold Plated:2μm"/80μm"Ni, 0.8μ" gold

Plating(Contact):2μm/80μ"NI, gold or Tin plated

Insuiator:PPS UL94V-0

ClIp(Contact 4 Flnger):Beryllium copper,heat teated

Electrical:

Current rating:3Amps/contact max.

Contact resistance:≤4mΩ/contact

Insuiation resistance:≥1000MΩ at V=100V

Operaing vottage:60VAC/DC

Mechanical:

Average Insertion force with steel pin of ø0.432:<250g

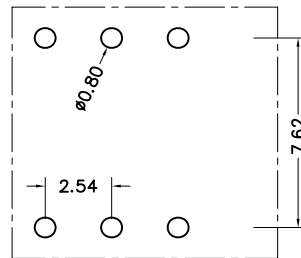
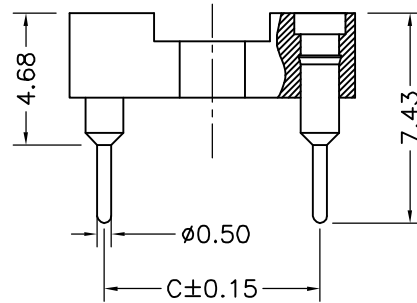
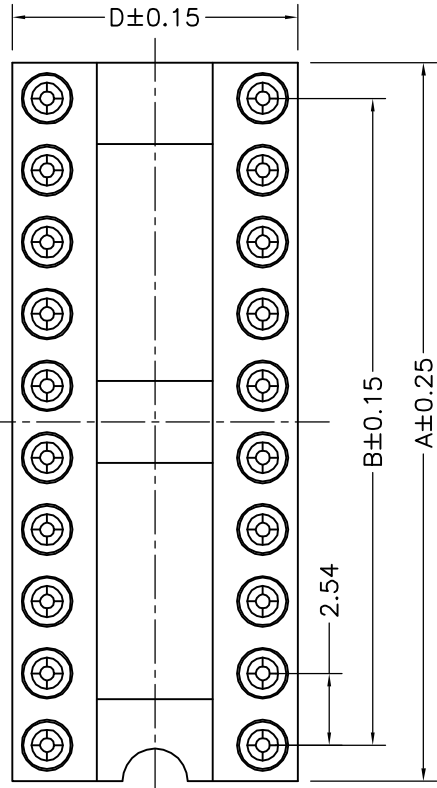
Average withdrawal force with steel pin of ø0.432:>70g

Mechanical lige cycle:min 200

Operaling temperature:-40° C to+105° C

Soldering temperature:+255° C

Serial number	No. of Positions	PART NO	A	B	C	D
1	6	06	7.62	5.08	7.62	10.10
2	8	08	10.16	7.62	7.62	10.10
3	10	10	12.7	10.16	7.62	10.10
4	12	12	15.24	12.7	7.62	10.10
5	14	14	17.78	15.24	7.62	10.10
6	16	16	20.32	17.78	7.62	10.10
7	18	18	22.86	20.32	7.62	10.10
8	20	20	25.4	22.86	7.62	10.10
9	22	22	27.94	25.4	7.62	10.10
10	24	24	30.48	27.94	7.62	10.10
11	28	28	35.56	33.02	7.62	10.10



P C B I A Y O U T

TOLERANCE UNLESS OTHERWISE

X.	±0.30	X°	±5°
.X	±0.20	.X°	±2°
.XX	±0.08	.XX°	±1°
.XXX	±0.03	.XXX°	±0.5°

DRAWN

CK tan

CHKD

APPD

VIEW



XFCN兴飞连接器有限公司
CONNECTORS XFCN CONNECTORS CO., LTD.

PRODUCT NAME

2.54mm IC Socket Connectors

PART. NO.

IC254V-12-XX-0743

SHEET

1/1

DATE

2010. 4. 12

UNITS

mm

SCALE

1:1

DWG NO.

009

A0
VER

MODIFICATION

DRAW

DATE

X-ON Electronics

Largest Supplier of Electrical and Electronic Components

Click to view similar products for [IC & Component Sockets](#) category:

Click to view products by [XFCN](#) manufacturer:

Other Similar products are found below :

[614-DG5](#) [670](#) [672](#) [673](#) [712-93-120-41-001000](#) [714-93-104-31-018000](#) [8-1437531-4](#) [8150-6P10](#) [835-43-014-10-001000](#) [851-41-006-10-001000](#) [851-43-008-20-001000](#) [851-43-014-20-001000](#) [851-93-006-20-001000](#) [851-93-010-20-001000](#) [853-43-020-10-001000](#) [86.010.0053.0](#) [116-43-308-41-007000](#) [121-13-318-41-001000](#) [121-13-320-41-001000](#) [121-13-308-41-001000](#) [123-43-314-41-801000](#) [123-43-420-41-001000](#) [122-13-316-41-001000](#) [123-13-624-41-001000](#) [123-43-306-41-001000](#) [12-3513-11](#) [123-91-320-41-001000](#) [126-43-310-41-002000](#) [AKSUN](#) [37V-T](#) [1437503-9](#) [1437504-1](#) [APA-640-G-P](#) [146-44-308-41-013000](#) [146-43-308-41-012000](#) [160-10-308-00-001000](#) [160-40-320-00-001000](#) [214-99-306-01-670800](#) [2-382761-4](#) [2-5331677-4](#) [2-640360-3](#) [2801-3-00-44-00-00-07-0](#) [940-44-052-17-400004](#) [299-83-314-11-001101](#) [1986000-2](#) [2103331641101000](#) [210-43-320-41-001000](#) [210-99-628-41-001000](#) [2-1437504-6](#) [2-1437515-5](#) [2-1437531-2](#)