

环保物料

TEL: 0769-82001899

Technical Data

Material:

Pin(outer sleeve): Brass, machined CuZn38Pb2

Plating(outer sleeve):

Tin Plated: 2μm/80μm Ni, 5μm/200μm Sn

Gold Plated: 2μm/80μm Ni, 0.8μm gold

Plating(Contact): 2μm/80μm Ni, gold or Tin plated

Insulator: PPS UL94V-0

Clip(Contact 4 Finger): Beryllium copper, heat treated

Electrical:

Current rating: 3Amps/contact max.

Contact resistance: ≤4mΩ/contact

Insulation resistance: ≥1000MΩ at V=100V

Operating voltage: 60VAC/DC

Mechanical:

Average Insertion force with steel pin of ∅0.432: <250g

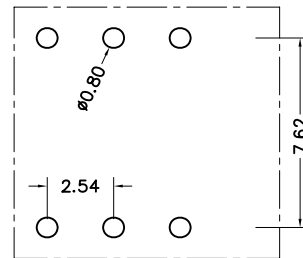
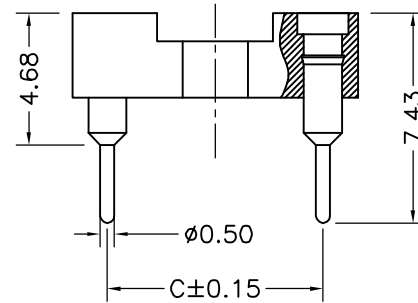
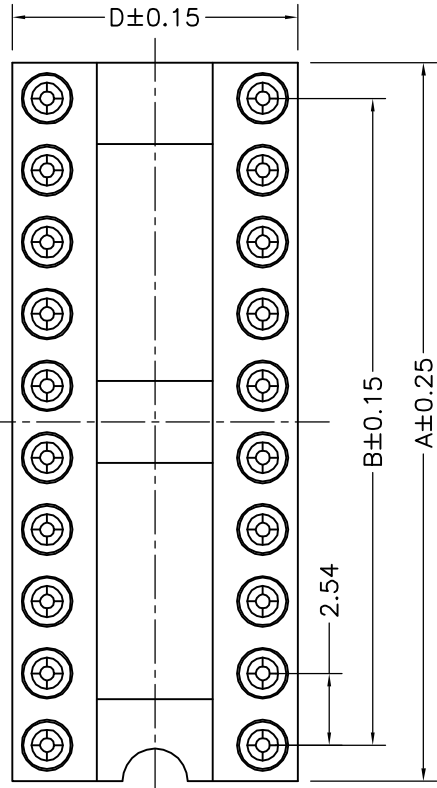
Average withdrawal force with steel pin of ∅0.432: >70g

Mechanical life cycle: min 200

Operating temperature: -40°C to +105°C

Soldering temperature: +255°C

Serial number	No. of Positions	PART NO	A	B	C	D
1	6	06	7.62	5.08	7.62	10.10
2	8	08	10.16	7.62	7.62	10.10
3	10	10	12.7	10.16	7.62	10.10
4	12	12	15.24	12.7	7.62	10.10
5	14	14	17.78	15.24	7.62	10.10
6	16	16	20.32	17.78	7.62	10.10
7	18	18	22.86	20.32	7.62	10.10
8	20	20	25.4	22.86	7.62	10.10
9	22	22	27.94	25.4	7.62	10.10
10	24	24	30.48	27.94	7.62	10.10
11	28	28	35.56	33.02	7.62	10.10



PCB LAYOUT

AO	VER	MODIFICATION	DRAW	DATE
----	-----	--------------	------	------

TOLERANCE UNLESS OTHERWISE				DRAWN	CK	tan
X.	±0.30	X°	±5°	CHKD		
.X	±0.20	.X°	±2°	APPD		
.XX	±0.08	.XX°	±1°	VIEW	⊕	⊖
.XXX	±0.03	.XXX°	±0.5°			

XFCN 兴飞连接器有限公司 CONNECTORS XFCN CONNECTORS CO., LTD.		PRODUCT NAME	2.54mm IC Socket Connectors
		PART. NO.	IC254V-12-XX-0743

SHEET	1/1
DATE	2010. 4. 12
UNITS	mm
SCALE	1:1
DWG. NO.	009

X-ON Electronics

Largest Supplier of Electrical and Electronic Components

Click to view similar products for [IC & Component Sockets](#) category:

Click to view products by [XFCN](#) manufacturer:

Other Similar products are found below :

[614-DG5](#) [670](#) [672](#) [673](#) [712-93-120-41-001000](#) [714-93-104-31-018000](#) [8-1437531-4](#) [8150-6P10](#) [835-43-014-10-001000](#) [851-41-006-10-001000](#) [851-43-008-20-001000](#) [851-43-014-20-001000](#) [851-93-006-20-001000](#) [851-93-010-20-001000](#) [853-43-020-10-001000](#) [86.010.0053.0](#) [116-43-308-41-007000](#) [121-13-318-41-001000](#) [121-13-320-41-001000](#) [121-13-308-41-001000](#) [123-43-314-41-801000](#) [123-43-420-41-001000](#) [122-13-316-41-001000](#) [123-13-624-41-001000](#) [123-43-306-41-001000](#) [12-3513-11](#) [123-91-320-41-001000](#) [126-43-310-41-002000](#) [AKSUN](#) [37V-T](#) [1437503-9](#) [1437504-1](#) [APA-640-G-P](#) [146-44-308-41-013000](#) [146-43-308-41-012000](#) [160-10-308-00-001000](#) [160-40-320-00-001000](#) [214-99-306-01-670800](#) [2-382761-4](#) [2-5331677-4](#) [2-640360-3](#) [2801-3-00-44-00-00-07-0](#) [940-44-052-17-400004](#) [299-83-314-11-001101](#) [1986000-2](#) [2103331641101000](#) [210-43-320-41-001000](#) [210-99-628-41-001000](#) [2-1437504-6](#) [2-1437515-5](#) [2-1437531-2](#)