

环保物料

TEL: 0769-82001899

NOTE:

1.MATERIAL:

Housing: ThermalPlastic (UL94V-0)

Terminal: Copper Alloy

Color: Natural

2.SPECIFICATION:

Current Rating: 0.5A AC,DC (AWG#32)

Voltage Rating: 30V (AC,DC)

Contact Resistance: Initial: 30mΩ max

After environmental: 40mΩmax

Insulator Resistance:Initial: 100MΩ min

After environmental:100MΩ min

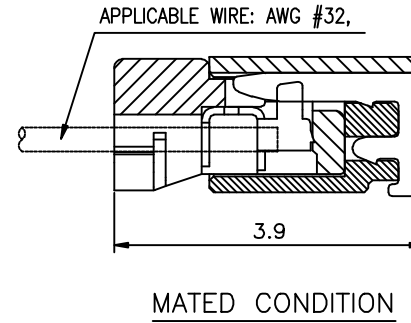
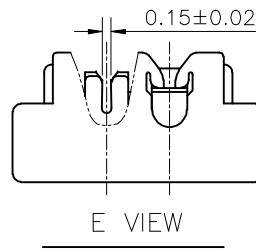
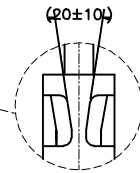
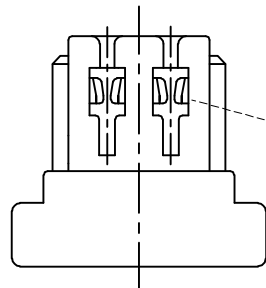
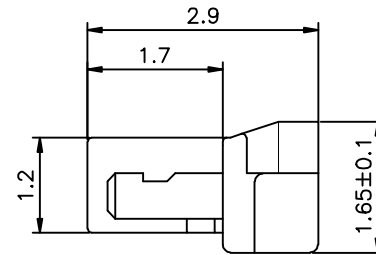
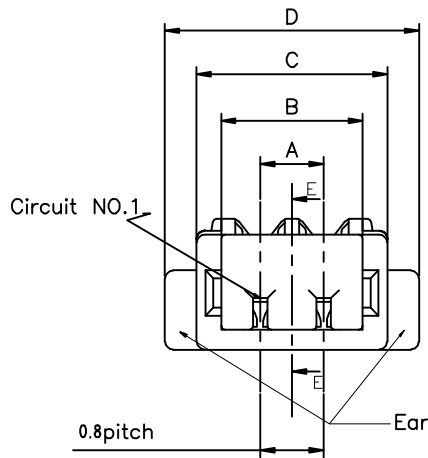
Withstanding Voltage:200v AC for 1 minute

Temperature Range: -25°C-85°C

Applicable Wire: AWG #32

Insulation O.D.: $\phi 0.38 \pm 0.02$ mm

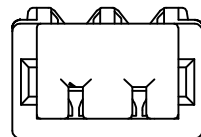
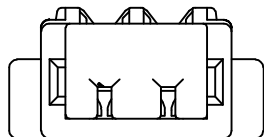
3.Ordering Information:



CKT	Dim A	Dim B	Dim C	Dim D
2	0.80	1.78	2.40	3.20
3	1.60	2.58	3.20	4.00
4	2.40	3.38	4.00	4.80
5	3.20	4.18	4.80	5.60
6	4.00	4.98	5.60	6.40
7	4.80	5.78	6.40	7.20
8	5.60	6.58	7.20	8.00
9	6.40	7.38	8.00	8.80
10	7.20	8.18	8.80	9.60
11	8.00	8.98	9.60	10.40
12	8.80	9.78	10.40	11.20
13	9.60	10.58	11.20	12.00
14	10.40	11.38	12.00	12.80
15	11.20	12.18	12.80	13.60
16	12.00	12.98	13.60	14.40
17	12.80	13.78	14.40	15.20
18	13.60	14.58	15.20	16.00
19	14.40	15.38	16.00	16.80
20	15.20	16.18	16.80	17.60
21	16.00	16.98	17.60	18.40
22	16.80	17.78	18.40	19.20
23	17.60	18.58	19.20	20.00
24	18.40	19.38	20.00	20.80

C-WB0812(H)-XXXXXE

C-WB0812(H)-XXXXX



TOLERANCE UNLESS OTHERWISE

X. ± 0.30 X° $\pm 5^\circ$

.X ± 0.20 .X° $\pm 2^\circ$

.XX ± 0.08 .XX° $\pm 1^\circ$

.XXX ± 0.03 .XXX° $\pm 0.5^\circ$

DRAWN

CK tan

CHKD

APPD

VIEW



XFCN兴飞连接器有限公司
CONNECTORS XFCN CONNECTORS CO., LTD.

PRODUCT NAME

0.80mm IDC Style Connectors

PART. NO.

M0800HI-XX-GN

SHEET

1/1

DATE

2010. 4. 12

UNITS

mm

SCALE

1:1

DWG. NO.

009

AO

VER

MODIFICATION

DRAW

DATE

X-ON Electronics

Largest Supplier of Electrical and Electronic Components

Click to view similar products for [Headers & Wire Housings](#) category:

Click to view products by [XFCN](#) manufacturer:

Other Similar products are found below :

[95000-104TRLF](#) [10135584-644402LF](#) [DF62W-EP2022PCA](#) [95000-106TRLF](#) [DF62W-2022SCA](#) [DF62W-EP2022PC](#) [2203348](#) [DF62W-2022SC](#) [1084018](#) [1029039](#) [1084017](#) [802-10-012-10-002000](#) [1112640](#) [1112639](#) [891-007-9SS-BST1T](#) [000-34000](#) [0008550134](#) [0009482033](#) [0009507031](#) [57102-F02-18ULF](#) [57102-S06-03LF](#) [57202-S52-04LF](#) [PCN6-15S-2.5E](#) [0039019024](#) [58102-G61-06LF](#) [582553-1](#) [0009485154](#) [0009508121](#) [0022285053](#) [0050291907](#) [018731A](#) [LY20-4P-DT1-P1E-BR](#) [02.125.8002.8](#) [60101931](#) [60598-1 \(Cut Strip\)](#) [M1625-3R/100](#) [61062-3](#) [61082-181009](#) [CSU011177004](#) [636-1427](#) [638009-1](#) [641938-9](#) [641991-4](#) [644168-1](#) [644827-2](#) [647662-1](#) [65039-019ELF](#) [65692-001LF](#) [65781-018](#) [65781-047](#)