

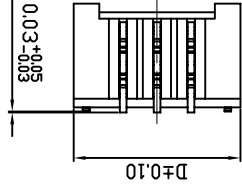
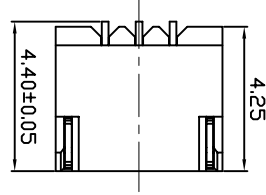
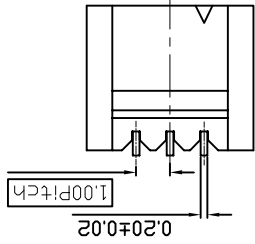
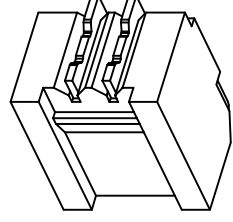
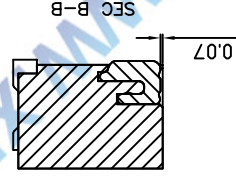
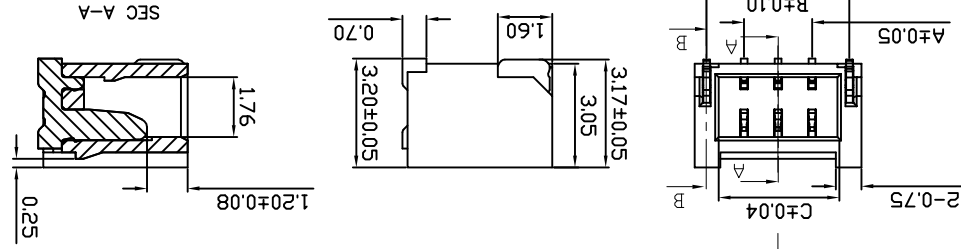
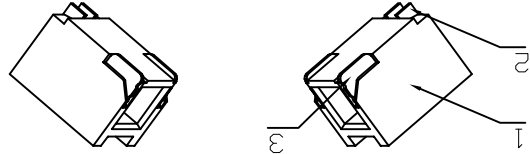
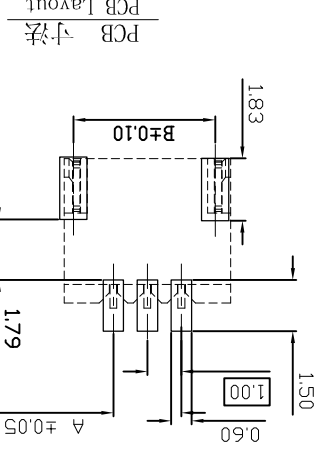
SPECIFICATIONS

- 1.Voltage rating: 125V AC, DC
- 2.Current rating: 1A, AC, DC
- 3.Withstanding Voltage: 500V AC/minute
- 4.Insulation resistance:100M min
- 5.Temperature range: -25 ° C+85 ° C
- 6.Contact resistance: 20m max

WAFER
 Housing Material: PA9T UL 94V0
 Pin Material: Phosphor Bronze or Brass
 Contact Area Plating: Plated Tin or Plated Gold
 Mates with :P1007B series Housing
 Poles:02-30P
 Part No.: M1007BRS-XX-9T-R

Pin位数
 R=卷装 无=散装

N	A	B	C	D
2	1.00	3.20	2.50	3.90
3	2.00	4.20	3.50	4.90
4	3.00	5.20	4.50	5.90
5	4.00	6.20	5.50	6.90
6	5.00	7.20	6.50	7.90
7	6.00	8.20	7.50	8.90
8	7.00	9.20	8.50	9.90
9	8.00	10.20	9.50	10.90
10	9.00	11.20	10.50	11.90
11	10.00	12.20	11.50	12.90
12	11.00	13.20	12.50	13.90
13	12.00	14.20	13.50	14.90
14	13.00	15.20	14.50	15.90
15	14.00	16.20	15.50	16.90
16	15.00	17.20	16.50	17.90
17	16.00	18.20	17.50	18.90
18	17.00	19.20	18.50	19.90
19	18.00	20.20	19.50	20.90
20	19.00	21.20	20.50	21.90
21	20.00	22.20	21.50	22.90
22	21.00	23.20	22.50	23.90
23	22.00	24.20	23.50	24.90
24	23.00	25.20	24.50	25.90
25	24.00	26.20	25.50	26.90
26	25.00	27.20	26.50	27.90
27	26.00	28.20	27.50	28.90
28	27.00	29.20	28.50	29.90
29	28.00	30.20	29.50	30.90
30	29.00	31.20	30.50	31.90



VER	MODIFICATION	DATE	XXX	±0.03	.XXX°	±0.5°	VIEW	VIEW	PART. NO.	M1007BRS-xx-9T	DWG NO.	009
A0			.XX	±0.08	.XX°	±1°	APPD		PRODUCT NAME	1.00mm Crimp Style Connectors	SCALE	1:1
			.X	±0.20	.X°	±2°	CHKD		CONNECTORS XFCN CONNECTORS CO., LTD.	1.00mm Crimp Style Connectors	UNITS	mm
			X.	±0.30	X°	±5°	DRAWN	CK tan	XFCN 兴飞连接器有限公司	1.00mm Crimp Style Connectors	DATE	2010.4.12
									CONNECTIONS XFCN CONNECTORS CO., LTD.	1.00mm Crimp Style Connectors	SHEET	1/1

X-ON Electronics

Largest Supplier of Electrical and Electronic Components

Click to view similar products for [Headers & Wire Housings](#) category:

Click to view products by [XFCN](#) manufacturer:

Other Similar products are found below :

[95000-104TRLF](#) [10135584-644402LF](#) [DF62W-EP2022PCA](#) [95000-106TRLF](#) [DF62W-2022SCA](#) [DF62W-EP2022PC](#) [2203348](#) [DF62W-2022SC](#) [1084018](#) [1029039](#) [1084017](#) [802-10-012-10-002000](#) [1112640](#) [1112639](#) [891-007-9SS-BST1T](#) [000-34000](#) [0008550134](#) [0009482033](#) [0009507031](#) [57102-F02-18ULF](#) [57102-S06-03LF](#) [57202-S52-04LF](#) [PCN6-15S-2.5E](#) [0039019024](#) [58102-G61-06LF](#) [582553-1](#) [0009485154](#) [0009508121](#) [0022285053](#) [0050291907](#) [018731A](#) [LY20-4P-DT1-P1E-BR](#) [02.125.8002.8](#) [60101931](#) [60598-1 \(Cut Strip\)](#) [M1625-3R/100](#) [61062-3](#) [61082-181009](#) [CSU011177004](#) [636-1427](#) [638009-1](#) [641938-9](#) [641991-4](#) [644168-1](#) [644827-2](#) [647662-1](#) [65039-019ELF](#) [65692-001LF](#) [65781-018](#) [65781-047](#)