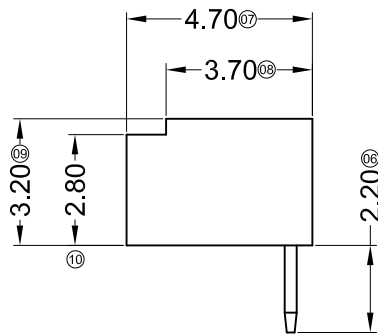
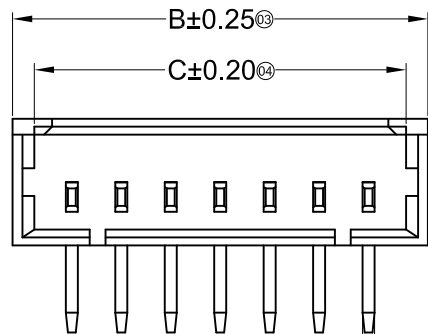
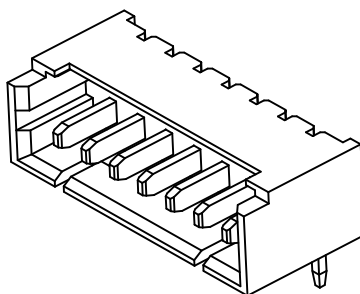
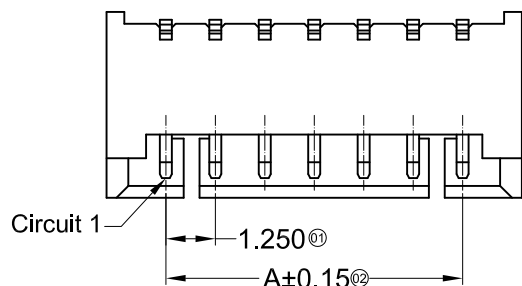
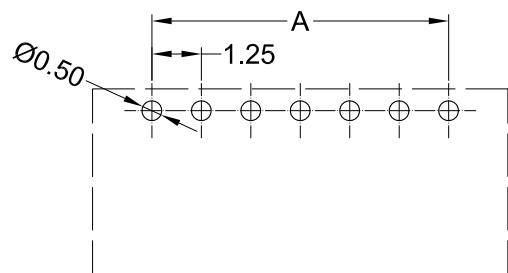


■ Specifications :

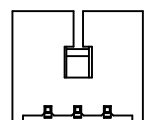
- Voltage rating: 125V AC / DC
- Current rating: 1A AC / DC
- Withstanding voltage: 250V AC/minute
- Temperature range: -25°C~+85°C
- Insulation resistance: ≥100MΩ
- Contact resistance: ≤20mΩ
- After environmental testing: ≤40mΩ



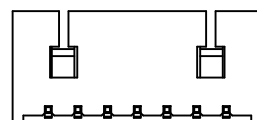
| Poles | Dimensions(mm) | | | Poles | Dimensions(mm) | | |
|-------|----------------|-------|-------|-------|----------------|-------|-------|
| | A | B | C | | A | B | C |
| 02 | 1.25 | 4.25 | 3.15 | 10 | 11.25 | 14.25 | 13.15 |
| 03 | 2.50 | 5.50 | 4.40 | 11 | 12.50 | 15.50 | 14.40 |
| 04 | 3.75 | 6.75 | 5.65 | 12 | 13.75 | 16.75 | 15.65 |
| 05 | 5.00 | 8.00 | 6.90 | 13 | 15.00 | 18.00 | 16.90 |
| 06 | 6.25 | 9.25 | 8.15 | 14 | 16.25 | 19.25 | 18.15 |
| 07 | 7.50 | 10.50 | 9.40 | 15 | 17.50 | 20.50 | 19.40 |
| 08 | 8.75 | 11.75 | 10.65 | 16 | 18.75 | 21.75 | 20.65 |
| 09 | 10.00 | 13.00 | 11.90 | | | | |



Recommended P.C.B Layout
General Tolerance ±0.05



02P~03P Single Gap
Scale 0.6:1



04P~16P Double Gap
Scale 0.6:1

| | | | |
|-----|--------------|------|------|
| AO | MODIFICATION | DRAW | DATE |
| VER | | | |

| TOLERANCE UNLESS OTHERWISE | | | | DRAWN | CK tan |
|----------------------------|-------|-------|-------|-------|--------|
| X. | ±0.30 | X° | ±5° | CHKD | |
| .X | ±0.20 | .X° | ±2° | APPD | |
| .XX | ±0.08 | .XX° | ±1° | VIEW | ⊕ |
| .XXX | ±0.03 | .XXX° | ±0.5° | | |

| | | | |
|---|--|--------------|-------------------------------|
| XFCN 兴飞连接器有限公司 CONNECTORS XFCN CONNECTORS CO., LTD. | | PRODUCT NAME | 1.25mm Crimp Style Connectors |
| | | PART. NO. | M1250R-XX-N0 |

| | |
|----------|-------------|
| SHEET | 1/1 |
| DATE | 2010. 4. 12 |
| UNITS | mm |
| SCALE | 1:1 |
| DWG. NO. | 009 |

X-ON Electronics

Largest Supplier of Electrical and Electronic Components

Click to view similar products for [Headers & Wire Housings](#) category:

Click to view products by [XFCN](#) manufacturer:

Other Similar products are found below :

[95000-104TRLF](#) [10135584-644402LF](#) [DF62W-EP2022PCA](#) [95000-106TRLF](#) [DF62W-2022SCA](#) [DF62W-EP2022PC](#) [2203348](#) [DF62W-2022SC](#) [1084018](#) [1029039](#) [1084017](#) [802-10-012-10-002000](#) [1112640](#) [1112639](#) [891-007-9SS-BST1T](#) [000-34000](#) [0008550134](#) [0009482033](#) [0009507031](#) [57102-F02-18ULF](#) [57102-S06-03LF](#) [57202-S52-04LF](#) [PCN6-15S-2.5E](#) [0039019024](#) [58102-G61-06LF](#) [582553-1](#) [0009485154](#) [0009508121](#) [0022285053](#) [0050291907](#) [018731A](#) [LY20-4P-DT1-P1E-BR](#) [02.125.8002.8](#) [60101931](#) [60598-1 \(Cut Strip\)](#) [M1625-3R/100](#) [61062-3](#) [61082-181009](#) [CSU011177004](#) [636-1427](#) [638009-1](#) [641938-9](#) [641991-4](#) [644168-1](#) [644827-2](#) [647662-1](#) [65039-019ELF](#) [65692-001LF](#) [65781-018](#) [65781-047](#)