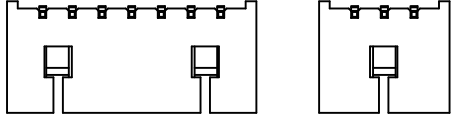
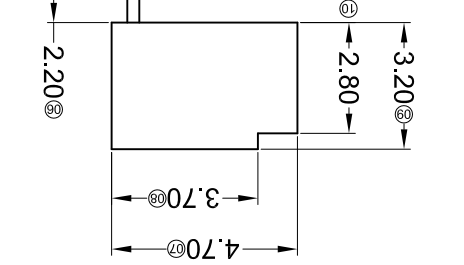
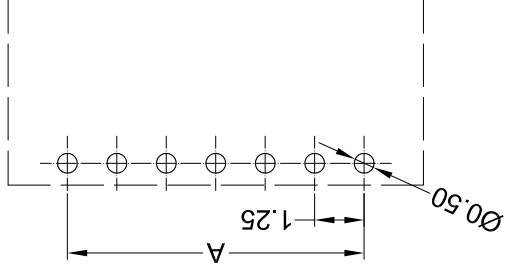
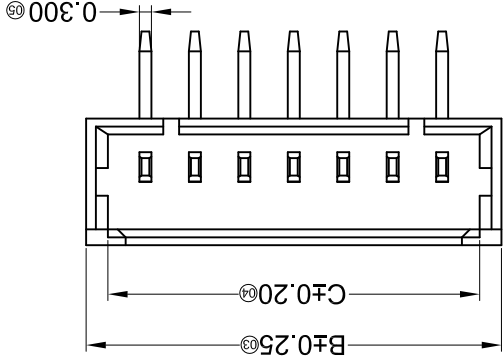
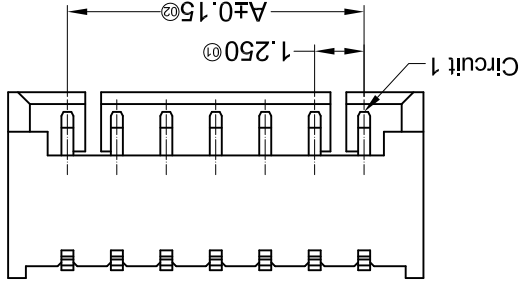
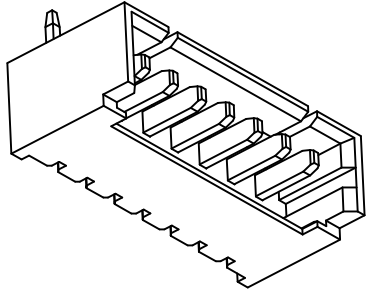


- Specifications :
- Voltage rating: 125V AC / DC
 - Current rating: 1A AC / DC
 - Withstanding voltage: 250V AC/minute
 - Temperature range: -25°C~+85°C
 - Insulation resistance: ≥100MΩ
 - Contact resistance: ≤20mΩ
 - After environmental testing: ≤40mΩ



Poles	Dimensions(mm)		
	A	B	C
02	1.25	4.25	3.15
03	2.50	5.50	4.40
04	3.75	6.75	5.65
05	5.00	8.00	6.90
06	6.25	9.25	8.15
07	7.50	10.50	9.40
08	8.75	11.75	10.65
09	10.00	13.00	11.90
Poles	Dimensions(mm)		
A	B	C	
10	11.25	14.25	13.15
11	12.50	15.50	14.40
12	13.75	16.75	15.65
13	15.00	18.00	16.90
14	16.25	19.25	18.15
15	17.50	20.50	19.40
16	18.75	21.75	20.65

Recommended P.C.B Layout
General Tolerance±0.05

TOLERANCE UNLESS OTHERWISE
DRAWN

CK tan

XFCN 飞连接器有限公司
CONNECTORS XFCN CONNECTORS CO., LTD.

SHEET 1/1

DATE 2010.4.12

UNITS mm

SCALE 1:1

DWG NO. 009

VER A0

MODIFICATION

DATE

DATE

X. ±0.30 X°. ±5°
 .X ±0.20 .X°. ±2°
 .XX ±0.08 .XX°. ±1°
 .XXX ±0.03 .XXX°. ±0.5°

VIEW

APPD

CHKD

DRAWN

VIEW

APPD

DRAWN

VIEW

VIEW

VIEW

VIEW

VIEW

VIEW

VIEW

VIEW

VIEW

VIEW

VIEW

VIEW

VIEW

VIEW

VIEW

VIEW

VIEW

VIEW

VIEW

VIEW

VIEW

VIEW

VIEW

VIEW

VIEW

VIEW

VIEW

VIEW

VIEW

VIEW

VIEW

VIEW

VIEW

VIEW

VIEW

VIEW

VIEW

VIEW

VIEW

VIEW

VIEW

VIEW

VIEW

VIEW

VIEW

VIEW

VIEW

VIEW

VIEW

VIEW

VIEW

VIEW

VIEW

VIEW

VIEW

VIEW

VIEW

VIEW

VIEW

VIEW

VIEW

VIEW

VIEW

VIEW

VIEW

VIEW

VIEW

VIEW

VIEW

VIEW

VIEW

VIEW

VIEW

VIEW

VIEW

VIEW

VIEW

VIEW

VIEW

VIEW

VIEW

VIEW

VIEW

VIEW

VIEW

VIEW

VIEW

VIEW

VIEW

VIEW

VIEW

VIEW

VIEW

VIEW

VIEW

VIEW

VIEW

VIEW

VIEW

VIEW

VIEW

VIEW

VIEW

VIEW

VIEW

VIEW

VIEW

VIEW

VIEW

VIEW

VIEW

VIEW

VIEW

VIEW

VIEW

VIEW

VIEW

VIEW

VIEW

VIEW

VIEW

VIEW

VIEW

VIEW

VIEW

VIEW

VIEW

VIEW

VIEW

VIEW

VIEW

VIEW

VIEW

VIEW

VIEW

VIEW

VIEW

VIEW

VIEW

VIEW

VIEW

VIEW

VIEW

VIEW

VIEW

VIEW

VIEW

VIEW

VIEW

VIEW

VIEW

VIEW

VIEW

VIEW

VIEW

VIEW

VIEW

VIEW

VIEW

VIEW

VIEW

VIEW

VIEW

VIEW

VIEW

VIEW

VIEW

VIEW

VIEW

VIEW

VIEW

VIEW

VIEW

VIEW

VIEW

VIEW

VIEW

VIEW

VIEW

VIEW

VIEW

VIEW

VIEW

VIEW

VIEW

VIEW

VIEW

VIEW

VIEW

VIEW

VIEW

VIEW

VIEW

VIEW

VIEW

VIEW

VIEW

VIEW

VIEW

VIEW

VIEW

VIEW

VIEW

VIEW

VIEW

VIEW

VIEW

VIEW

VIEW

VIEW

VIEW

VIEW

VIEW

VIEW

VIEW

VIEW

VIEW

VIEW

VIEW

VIEW

VIEW

VIEW

VIEW

VIEW

VIEW

VIEW

VIEW

VIEW

VIEW

VIEW

VIEW

VIEW

VIEW

VIEW

VIEW

VIEW

VIEW

VIEW

VIEW

VIEW

VIEW

VIEW

VIEW

VIEW

VIEW

VIEW

VIEW

VIEW

VIEW

VIEW

VIEW

VIEW

VIEW

VIEW

VIEW

VIEW

VIEW

VIEW

VIEW

VIEW

VIEW

VIEW

VIEW

VIEW

VIEW

X-ON Electronics

Largest Supplier of Electrical and Electronic Components

Click to view similar products for [Headers & Wire Housings](#) category:

Click to view products by [XFCN](#) manufacturer:

Other Similar products are found below :

[95000-104TRLF](#) [10135584-644402LF](#) [DF62W-EP2022PCA](#) [95000-106TRLF](#) [DF62W-2022SCA](#) [DF62W-EP2022PC](#) [2203348](#) [DF62W-2022SC](#) [1084018](#) [1029039](#) [1084017](#) [802-10-012-10-002000](#) [1112640](#) [1112639](#) [891-007-9SS-BST1T](#) [000-34000](#) [0008550134](#) [0009482033](#) [0009507031](#) [57102-F02-18ULF](#) [57102-S06-03LF](#) [57202-S52-04LF](#) [PCN6-15S-2.5E](#) [0039019024](#) [58102-G61-06LF](#) [582553-1](#) [0009485154](#) [0009508121](#) [0022285053](#) [0050291907](#) [018731A](#) [LY20-4P-DT1-P1E-BR](#) [02.125.8002.8](#) [60101931](#) [60598-1 \(Cut Strip\)](#) [M1625-3R/100](#) [61062-3](#) [61082-181009](#) [CSU011177004](#) [636-1427](#) [638009-1](#) [641938-9](#) [641991-4](#) [644168-1](#) [644827-2](#) [647662-1](#) [65039-019ELF](#) [65692-001LF](#) [65781-018](#) [65781-047](#)