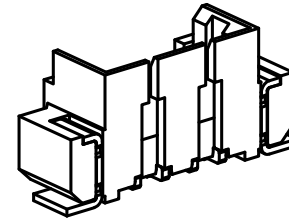
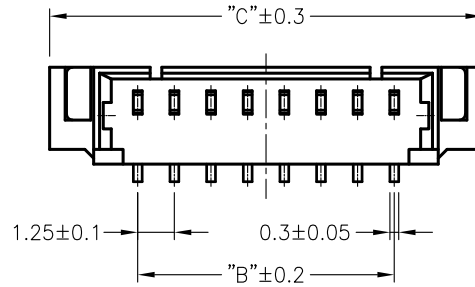


环保物料

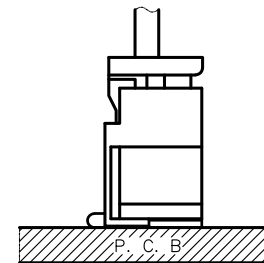
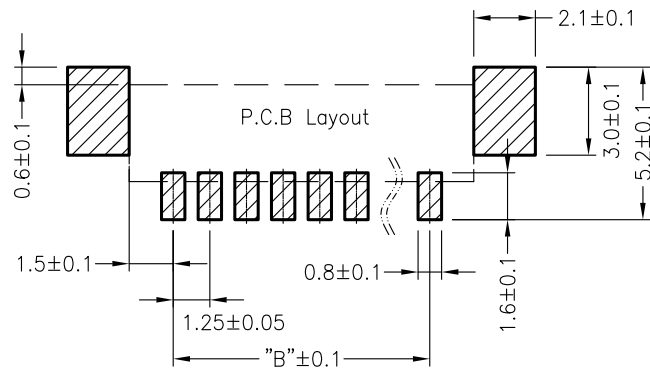
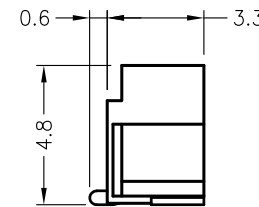
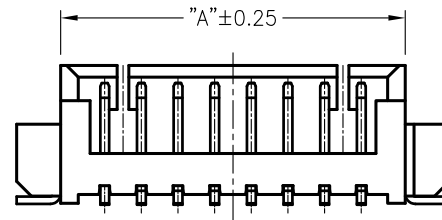
TEL:0769-82001899

Poles	DIM.A	DIM.B	DIM.C
2P	4.25	1.25	7.3
3P	5.50	2.50	8.5
4P	6.75	3.75	9.8
5P	8.00	5.00	11.0
6P	9.25	6.25	12.3
7P	10.50	7.50	13.5
8P	11.75	8.75	14.8
9P	13.00	10.00	16.0
10P	14.25	11.25	17.3
11P	15.50	12.50	18.5
12P	16.75	13.75	19.8
13P	18.00	15.00	21.0
14P	19.25	16.25	22.3
15P	20.50	17.50	23.5
16P	21.75	18.75	24.8
18P	24.25	21.25	26.0
20P	26.75	23.75	27.3



■ Specifications :

- Voltage rating: 125V AC / DC
- Current rating: 1A AC / DC
- Withstanding voltage: 250V AC/minute
- Temperature range: $-25^{\circ}\text{C} \sim +85^{\circ}\text{C}$
- Insulation resistance: $\geq 100\text{M}\Omega$
- Contact resistance: $\leq 20\text{m}\Omega$
- After environmental testing: $\leq 40\text{m}\Omega$



				TOLERANCE UNLESS OTHERWISE		DRAWN	CK tan	XFCN兴飞连接器有限公司		SHEET	1/1	
				X.	± 0.30	X°	$\pm 5^{\circ}$	CHKD	CONNECTORS XFCN CONNECTORS CO., LTD.	DATE	2010. 4. 12	
				.X	± 0.20	. X°	$\pm 2^{\circ}$	APPD	PRODUCT NAME	1.25mm Crimp Style Connectors	UNITS	mm
				.XX	± 0.08	. XX°	$\pm 1^{\circ}$		PART. NO.	M1250VS-XX-XX	SCALE	1:1
AO				.XXX	± 0.03	. XXX°	$\pm 0.5^{\circ}$	VIEW			DWG NO.	009
VER	MODIFICATION	DRAW	DATE									

X-ON Electronics

Largest Supplier of Electrical and Electronic Components

Click to view similar products for [Headers & Wire Housings](#) category:

Click to view products by [XFCN](#) manufacturer:

Other Similar products are found below :

[95000-104TRLF](#) [10135584-644402LF](#) [DF62W-EP2022PCA](#) [95000-106TRLF](#) [DF62W-2022SCA](#) [DF62W-EP2022PC](#) [2203348](#) [DF62W-2022SC](#) [1084018](#) [1029039](#) [1084017](#) [802-10-012-10-002000](#) [1112640](#) [1112639](#) [891-007-9SS-BST1T](#) [000-34000](#) [0008550134](#) [0009482033](#) [0009507031](#) [57102-F02-18ULF](#) [57102-S06-03LF](#) [57202-S52-04LF](#) [PCN6-15S-2.5E](#) [0039019024](#) [58102-G61-06LF](#) [582553-1](#) [0009485154](#) [0009508121](#) [0022285053](#) [0050291907](#) [018731A](#) [LY20-4P-DT1-P1E-BR](#) [02.125.8002.8](#) [60101931](#) [60598-1 \(Cut Strip\)](#) [M1625-3R/100](#) [61062-3](#) [61082-181009](#) [CSU011177004](#) [636-1427](#) [638009-1](#) [641938-9](#) [641991-4](#) [644168-1](#) [644827-2](#) [647662-1](#) [65039-019ELF](#) [65692-001LF](#) [65781-018](#) [65781-047](#)