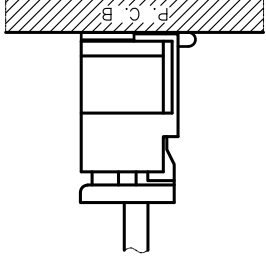
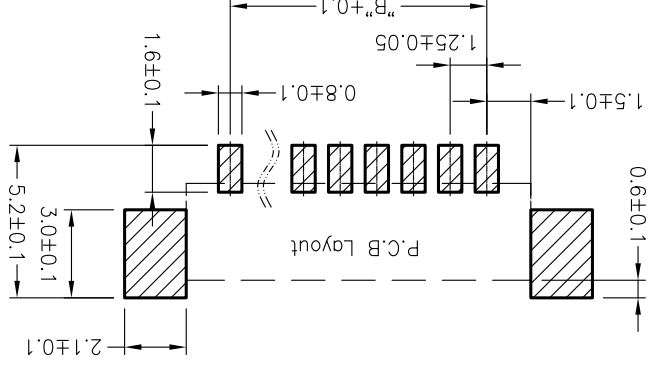
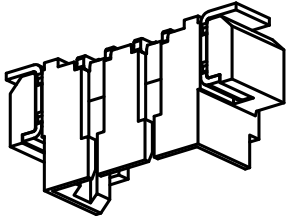
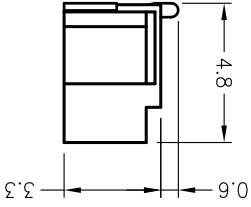
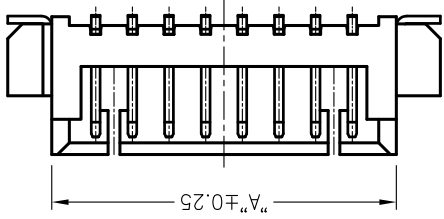
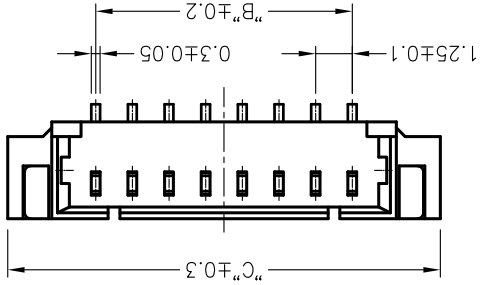


Poles	DIM.A	DIM.B	DIM.C
2P	4.25	1.25	7.3
3P	5.50	2.50	8.5
4P	6.75	3.75	9.8
5P	8.00	5.00	11.0
6P	9.25	6.25	12.3
7P	10.50	7.50	13.5
8P	11.75	8.75	14.8
9P	13.00	10.00	16.0
10P	14.25	11.25	17.3
11P	15.50	12.50	18.5
12P	16.75	13.75	19.8
13P	18.00	15.00	21.0
14P	19.25	16.25	22.3
15P	20.50	17.50	23.5
16P	21.75	18.75	24.8
18P	24.25	21.25	26.0
20P	26.75	23.75	27.3



VER	MODIFICATION	DRAW	DATE	TOLERANCE UNLESS OTHERWISE	DRAWN	CK tan
A0				X. ±0.30 X°. ±5°		
				.X ±0.20 .X°. ±2°		
				.XX ±0.08 .XX°. ±1°		
				.XXX ±0.03 .XXX°. ±0.5°		

VIEW	APPD	CHKD	DRAWN	PRODUCT NAME	PART. NO.	CONNECTIONS	DATE	SCALE	DWG NO.
VIEW	APPD	CHKD	DRAWN	1.25mm Crimp Style Connectors	M1250VS-XX-XX	CONNECTORS XFCN CONNECTORS CO., LTD.	2010.4.12	1:1	009
VIEW	APPD	CHKD	DRAWN	1.25mm Crimp Style Connectors	M1250VS-XX-XX	CONNECTORS XFCN CONNECTORS CO., LTD.	2010.4.12	1:1	009
VIEW	APPD	CHKD	DRAWN	1.25mm Crimp Style Connectors	M1250VS-XX-XX	CONNECTORS XFCN CONNECTORS CO., LTD.	2010.4.12	1:1	009

- Specifications :
- Voltage rating: 125V AC / DC
 - Current rating: 1A AC / DC
 - Withstanding voltage: 250V AC/minute
 - Temperature range: -25°C~+85°C
 - Insulation resistance: ≥100MΩ
 - Contact resistance: ≤20mΩ
 - After environmental testing: ≤40mΩ

X-ON Electronics

Largest Supplier of Electrical and Electronic Components

Click to view similar products for [Headers & Wire Housings](#) category:

Click to view products by [XFCN](#) manufacturer:

Other Similar products are found below :

[95000-104TRLF](#) [10135584-644402LF](#) [DF62W-EP2022PCA](#) [95000-106TRLF](#) [DF62W-2022SCA](#) [DF62W-EP2022PC](#) [2203348](#) [DF62W-2022SC](#) [1084018](#) [1029039](#) [1084017](#) [802-10-012-10-002000](#) [1112640](#) [1112639](#) [891-007-9SS-BST1T](#) [000-34000](#) [0008550134](#) [0009482033](#) [0009507031](#) [57102-F02-18ULF](#) [57102-S06-03LF](#) [57202-S52-04LF](#) [PCN6-15S-2.5E](#) [0039019024](#) [58102-G61-06LF](#) [582553-1](#) [0009485154](#) [0009508121](#) [0022285053](#) [0050291907](#) [018731A](#) [LY20-4P-DT1-P1E-BR](#) [02.125.8002.8](#) [60101931](#) [60598-1 \(Cut Strip\)](#) [M1625-3R/100](#) [61062-3](#) [61082-181009](#) [CSU011177004](#) [636-1427](#) [638009-1](#) [641938-9](#) [641991-4](#) [644168-1](#) [644827-2](#) [647662-1](#) [65039-019ELF](#) [65692-001LF](#) [65781-018](#) [65781-047](#)