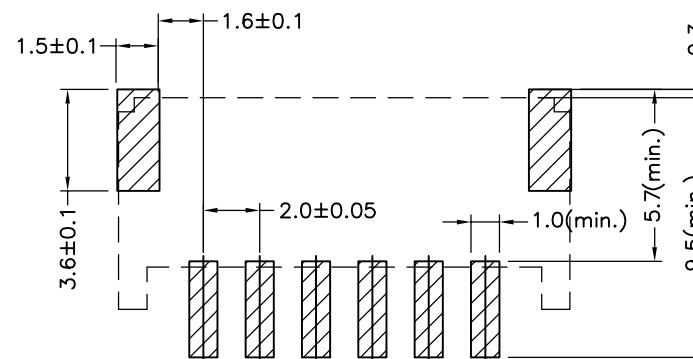
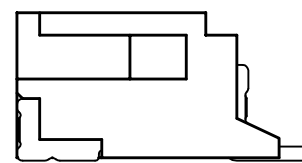
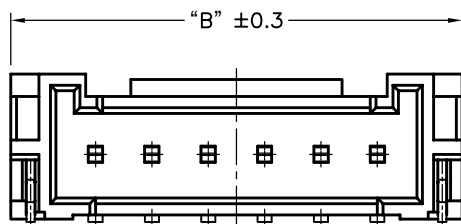
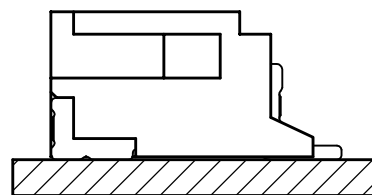
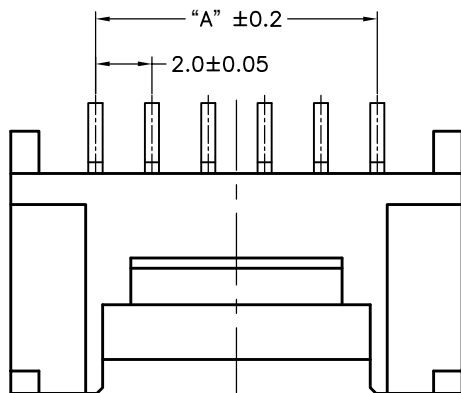


环保物料

TEL:0769-82001899

Poles	DIM.A	DIM.B
2	2.0	8.0
3	4.0	10.0
4	6.0	12.0
5	8.0	14.0
6	10.0	16.0
7	12.0	18.0
8	14.0	20.0
9	16.0	22.0
10	18.0	24.0
11	20.0	26.0
12	22.0	28.0
13	24.0	30.0
14	26.0	32.0
15	28.0	34.0
16	30.0	36.0



P.C.B LAYOUT

SPECIFICATIONS

- 1.Voltage rating: 250V AC, DC
  - 2.Current rating: 2A, AC, DC
  - 3.Withstanding Voltage: 1000V AC/minute
  - 4.Insulation resistance:1000M min
  - 5.Temperature range: -25 ° C+85 ° C
  - 6.Contact resistance: 20m max
- WAFER

Housing Material: PA9T/LCP UL 94V0  
 Pin Material: Phosphor Bronze or Brass  
 Contact Area Plating: Plated Tin or Plated Gold  
 Mates with :P2016 series Housing

Poles:02-16P

Part No.: M2016RS-xx-XX-R

R=卷装 无=管装

Pin位数

VER	MODIFICATION	DRAW	DATE
AO			

TOLERANCE UNLESS OTHERWISE	
X. $\pm 0.30$	X° $\pm 5^\circ$
.X $\pm 0.20$	.X° $\pm 2^\circ$
.XX $\pm 0.08$	.XX° $\pm 1^\circ$
.XXX $\pm 0.03$	.XXX° $\pm 0.5^\circ$

DRAWN	CK tan
CHKD	
APPD	
VIEW	

<b>XFCN</b> 兴飞连接器有限公司	
XFCN CONNECTORS CO.,LTD.	
PRODUCT NAME	2.00mm Crimp Style Connectors
PART. NO.	M2016RS-xx-XX-R

SHEET	1/1
DATE	2020. 04. 12
UNITS	mm
SCALE	1:1
DWG NO.	009

## X-ON Electronics

Largest Supplier of Electrical and Electronic Components

*Click to view similar products for [Headers & Wire Housings](#) category:*

*Click to view products by [XFCN](#) manufacturer:*

Other Similar products are found below :

[57102-F02-18ULF](#) [58102-G61-06LF](#) [582553-1](#) [009176003701906](#) [0050291907](#) [02.125.8002.8](#) [609-3404](#) [61062-3](#) [622-0430](#) [622-3653LF](#)  
[63453-116](#) [636-1030](#) [636-1427](#) [636-3427](#) [636-4007](#) [641938-9](#) [65495-038](#) [65692-001LF](#) [65781-018](#) [65781-047](#) [65817-010LF](#) [65817-015LF](#)  
[66207-023LF](#) [67016-026LF](#) [67095-007LF](#) [68631-112](#) [68645-018](#) [68648-049](#) [699319-000](#) [M90C108951C](#) [70.362.1628.0](#) [70-4210](#) [70-4226B](#)  
[70-4853B](#) [707-5020](#) [707-5028](#) [71.350.2428.0](#) [71961-016LF](#) [733-134](#) [754199-000](#) [760-3052](#) [787-8014-00](#) [FCN-367T-T012/H](#)  
[80.063.4001.1](#) [800-90-001-10-001000](#) [801-43-002-10-013000](#) [801-43-006-10-002000](#) [803-41-018-10-001000](#) [803-43-014-20-001000](#)  
[803-43-024-10-001000](#)