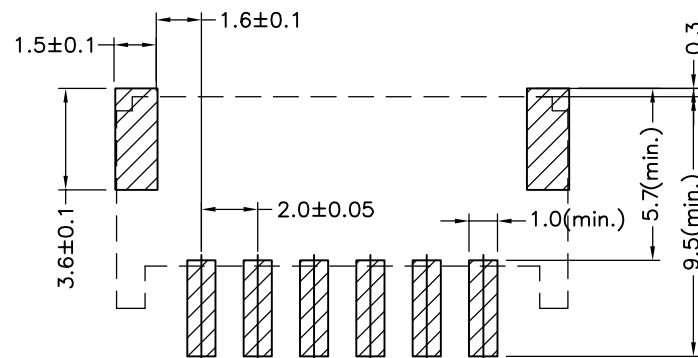
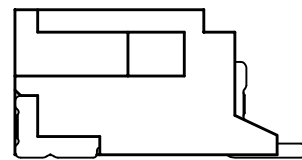
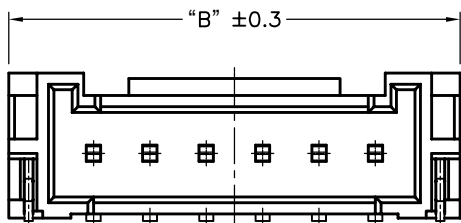
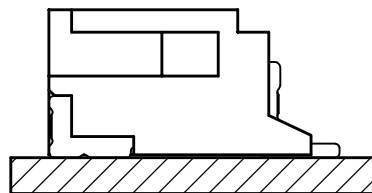
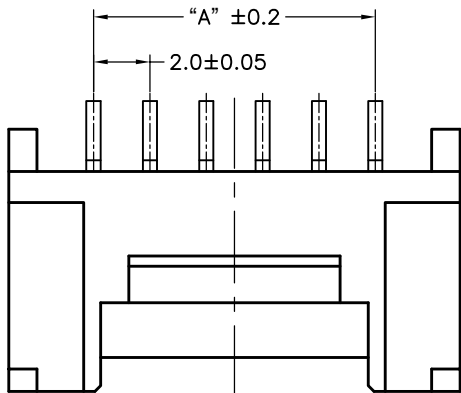


环保物料

TEL:0769-82001899

Poles	DIM.A	DIM.B
2	2.0	8.0
3	4.0	10.0
4	6.0	12.0
5	8.0	14.0
6	10.0	16.0
7	12.0	18.0
8	14.0	20.0
9	16.0	22.0
10	18.0	24.0
11	20.0	26.0
12	22.0	28.0
13	24.0	30.0
14	26.0	32.0
15	28.0	34.0
16	30.0	36.0



SPECIFICATIONS

- 1.Voltage rating: 250V AC, DC
 - 2.Current rating: 2A, AC, DC
 - 3.Withstanding Voltage: 1000V AC/minute
 - 4.Insulation resistance:1000M min
 - 5.Temperature range: -25 ° C-+85 ° C
 - 6.Contact resistance: 20m max
- WAFER
 Housing Material: PA9T UL 94V0
 Pin Material: Phosphor Bronze or Brass
 Contact Area Plating: Plated Tin or Plated Gold
 Mates with :P2016 series Housing
 Poles:02-16P
 Part No.: M2016RS-xxP

Pin位数

P.C.B LAYOUT

TOLERANCE UNLESS OTHERWISE

TOLERANCE :
 .000 :±0.08
 .00 :±0.13
 .0 :±0.25

DRAWN CK tan
 CHKD
 APPD
 VIEW

XFCN 兴飞连接器有限公司
 XFCN CONNECTORS CO.,LTD.

PRODUCT NAME 2.00mm Crimp Style Connectors
 PART. NO. M2016RS-xxP

SHEET 1/1
 DATE 2020. 04. 12
 UNITS mm
 SCALE 1:1
 DWG. NO. 009

AO VER MODIFICATION

DRAW DATE

X-ON Electronics

Largest Supplier of Electrical and Electronic Components

Click to view similar products for [Headers & Wire Housings](#) category:

Click to view products by [XFCN](#) manufacturer:

Other Similar products are found below :

[57102-F02-18ULF](#) [58102-G61-06LF](#) [582553-1](#) [009176003701906](#) [01.001.5753.1](#) [0050291907](#) [02.125.8002.8](#) [609-3404](#) [61062-3](#)
[CSU011177004](#) [622-0430](#) [622-3653LF](#) [63453-116](#) [636-1030](#) [636-1427](#) [636-3427](#) [636-4007](#) [641938-9](#) [644827-2](#) [65495-038](#) [65692-001LF](#)
[65781-018](#) [65781-047](#) [65817-010LF](#) [65817-015LF](#) [66207-023LF](#) [67095-007LF](#) [67601157](#) [68631-112](#) [68645-018](#) [699319-000](#)
[M90C108951C](#) [70.362.1628.0](#) [70-4210](#) [70-4226B](#) [70-4853B](#) [707-5028](#) [71.350.2428.0](#) [71961-016LF](#) [733-134](#) [733-162](#) [754199-000](#) [760-](#)
[3052](#) [80.063.4001.1](#) [800-90-001-10-001000](#) [800-90-010-10-002000](#) [801-43-002-10-013000](#) [801-43-006-10-002000](#) [803-41-018-10-001000](#)
[803-43-024-10-001000](#)