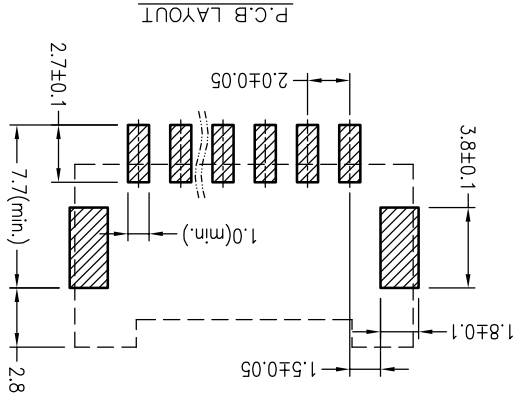
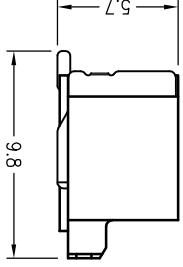
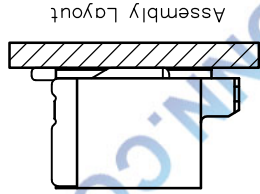
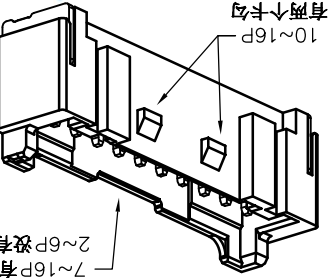
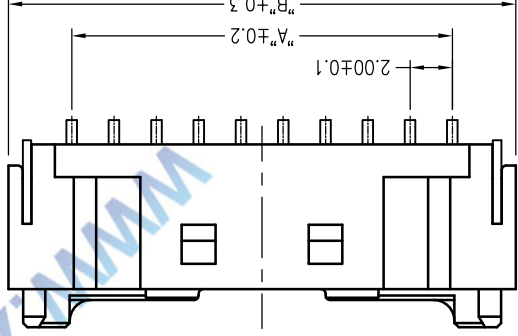
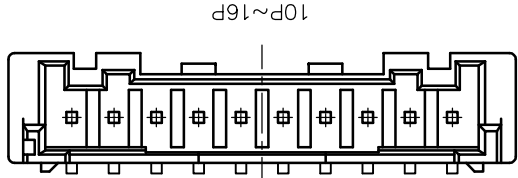
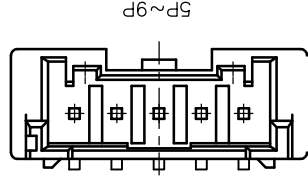
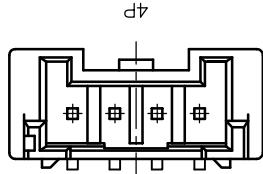
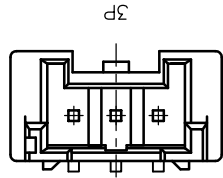
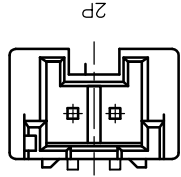


Poles	DIM.A	DIM.B	Poles	DIM.A	DIM.B
2P	2.0	8.0	10P	18.0	24.0
3P	4.0	10.0	11P	20.0	26.0
4P	6.0	12.0	12P	22.0	28.0
5P	8.0	14.0	13P	24.0	30.0
6P	10.0	16.0	14P	26.0	32.0
7P	12.0	18.0	15P	28.0	34.0
8P	14.0	20.0	16P	30.0	36.0
9P	16.0	22.0	-	-	-



SPECIFICATIONS

1. Voltage rating: 250V AC, DC
2. Current rating: 3A, AC, DC
3. Withstanding Voltage: 1000V AC/minute
4. Insulation resistance: 800M min
5. Temperature range: -25 °C +85 °C
6. Contact resistance: 20m max

WAFER
Housing Material: PA9T UL94V-0
Pin Material: Phosphor Bronze or Brass
Contact Area Plating: Plated Tin or Plated Gold
Mates with: P2029 series Housing
Poles: 02-16P
Part No.: M2029RS-xx-9T-R

Pin位数
R=卷装 无=管装

TOLERANCE UNLESS OTHERWISE

DRAWN CK tan

CHKD

APPD

VIEW

DRAWN

CHKD

APPD

VIEW

PART. NO.

XFCN 兴飞连接器有限公司
CONNECTORS XFCN CONNECTORS CO., LTD.

PRODUCT NAME

M2029RS-xx-9T-R

2.00mm Crimp Style Connectors

SHEET

DATE

UNITS

SCALE

DWG NO.

1/1

2010.4.12

mm

1:1

009

G

F

E

D

C

B

A

G

F

E

D

C

B

A

1

2

3

4

5

6

7

8

9

10

VER

A0

MODIFICATION

DRAW

DATE

.XXX ±0.03
.XX ±0.08
.X ±0.20
.X ±0.30

±0.5°
±1°
±2°
±5°

Φ

PRODUCT NAME

M2029RS-xx-9T-R

DWG NO.

009

X-ON Electronics

Largest Supplier of Electrical and Electronic Components

Click to view similar products for [Headers & Wire Housings](#) category:

Click to view products by [XFCN](#) manufacturer:

Other Similar products are found below :

[95000-104TRLF](#) [10135584-644402LF](#) [DF62W-EP2022PCA](#) [95000-106TRLF](#) [DF62W-2022SCA](#) [DF62W-EP2022PC](#) [2203348](#) [DF62W-2022SC](#) [1084018](#) [1029039](#) [1084017](#) [802-10-012-10-002000](#) [1112640](#) [1112639](#) [891-007-9SS-BST1T](#) [000-34000](#) [0008550134](#) [0009482033](#) [0009507031](#) [57102-F02-18ULF](#) [57102-S06-03LF](#) [57202-S52-04LF](#) [PCN6-15S-2.5E](#) [0039019024](#) [58102-G61-06LF](#) [582553-1](#) [0009485154](#) [0009508121](#) [0022285053](#) [0050291907](#) [018731A](#) [LY20-4P-DT1-P1E-BR](#) [02.125.8002.8](#) [60101931](#) [60598-1 \(Cut Strip\)](#) [M1625-3R/100](#) [61062-3](#) [61082-181009](#) [CSU011177004](#) [636-1427](#) [638009-1](#) [641938-9](#) [641991-4](#) [644168-1](#) [644827-2](#) [647662-1](#) [65039-019ELF](#) [65692-001LF](#) [65781-018](#) [65781-047](#)