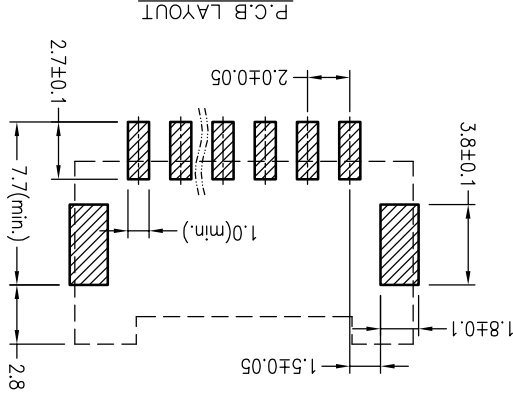
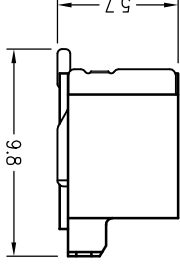
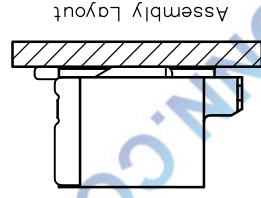
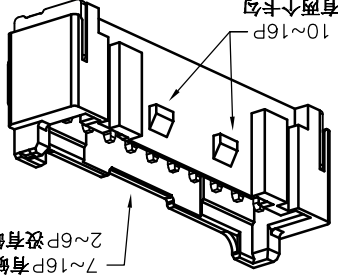
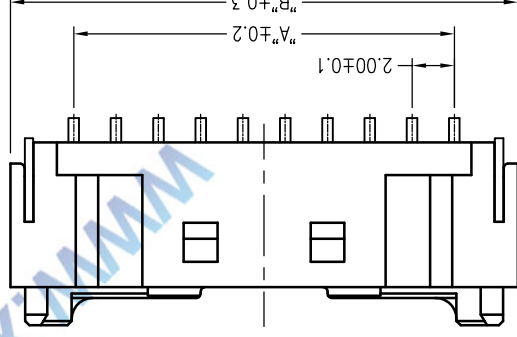
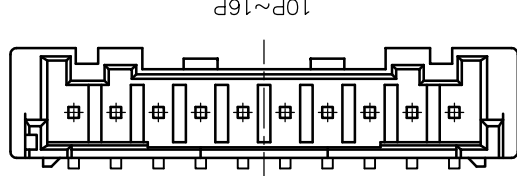
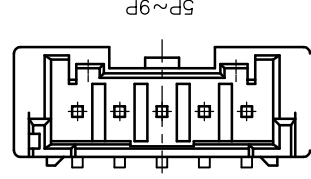
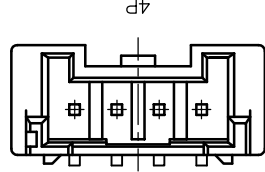
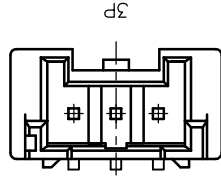
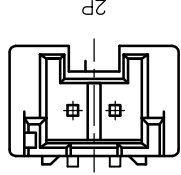


Poles	DIM.A	DIM.B	Poles	DIM.A	DIM.B
2P	2.0	8.0	10P	18.0	24.0
3P	4.0	10.0	11P	20.0	26.0
4P	6.0	12.0	12P	22.0	28.0
5P	8.0	14.0	13P	24.0	30.0
6P	10.0	16.0	14P	26.0	32.0
7P	12.0	18.0	15P	28.0	34.0
8P	14.0	20.0	16P	30.0	36.0
9P	16.0	22.0	-	-	-



SPECIFICATIONS

1. Voltage rating: 250V AC, DC
2. Current rating: 3A, AC, DC
3. Withstanding Voltage: 1000V AC/minute
4. Insulation resistance: 800M min
5. Temperature range: -25 °C +85 °C
6. Contact resistance: 20m max

WAFER  
Housing Material: PA9T UL94V-0  
Pin Material: Phosphor Bronze or Brass  
Contact Area Plating: Plated Tin or Plated Gold  
Mates with: P2029 series Housing  
Poles: 02-16P  
Part No.: M2029RS-xx-9T-R

Pin位数  
R=卷装 无=管装

TOLERANCE UNLESS OTHERWISE

DRAWN CK tan

CHKD

APPD

VIEW



PART. NO.

XFCN 兴飞连接器有限公司  
CONNECTORS XFCN CONNECTORS CO., LTD.

PRODUCT NAME  
2.00mm Crimp Style Connectors

M2029RS-xx-9T-R

DWG NO.

009

UNITS

mm

DATE

2010.4.12

SHEET

1/1

VER

A0

MODIFICATION

DRAW

DATE

.XXX

$\pm$ 0.03

$\pm$ 0.08

$\pm$ 0.20

$\pm$ 1

$\pm$ 2

$\pm$ 5

VIEW

VIEW

VIEW

VIEW

VIEW

VIEW

VIEW

VIEW

VIEW

VIEW

VIEW

VIEW

VIEW

VIEW

VIEW

VIEW

VIEW

VIEW

VIEW

VIEW

VIEW

VIEW

VIEW

VIEW

VIEW

## X-ON Electronics

Largest Supplier of Electrical and Electronic Components

*Click to view similar products for [Headers & Wire Housings](#) category:*

*Click to view products by [XFCN](#) manufacturer:*

Other Similar products are found below :

[95000-104TRLF](#) [10135584-644402LF](#) [DF62W-EP2022PCA](#) [95000-106TRLF](#) [DF62W-2022SCA](#) [DF62W-EP2022PC](#) [2203348](#) [DF62W-2022SC](#) [1084018](#) [1029039](#) [1084017](#) [802-10-012-10-002000](#) [1112640](#) [1112639](#) [891-007-9SS-BST1T](#) [000-34000](#) [0008550134](#) [0009482033](#) [0009507031](#) [57102-F02-18ULF](#) [57102-S06-03LF](#) [57202-S52-04LF](#) [PCN6-15S-2.5E](#) [0039019024](#) [58102-G61-06LF](#) [582553-1](#) [0009485154](#) [0009508121](#) [0022285053](#) [0050291907](#) [018731A](#) [LY20-4P-DT1-P1E-BR](#) [02.125.8002.8](#) [60101931](#) [60598-1 \(Cut Strip\)](#) [M1625-3R/100](#) [61062-3](#) [61082-181009](#) [CSU011177004](#) [636-1427](#) [638009-1](#) [641938-9](#) [641991-4](#) [644168-1](#) [644827-2](#) [647662-1](#) [65039-019ELF](#) [65692-001LF](#) [65781-018](#) [65781-047](#)