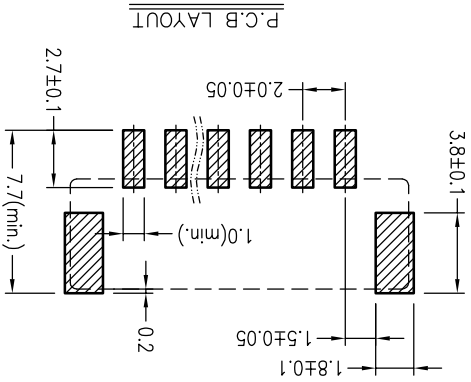
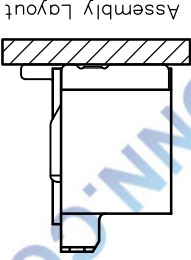
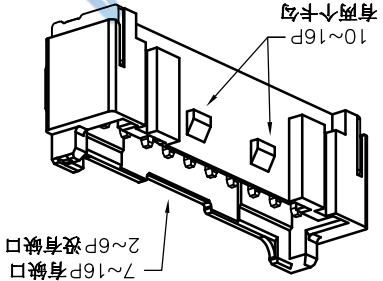
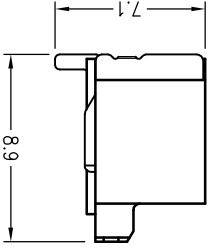
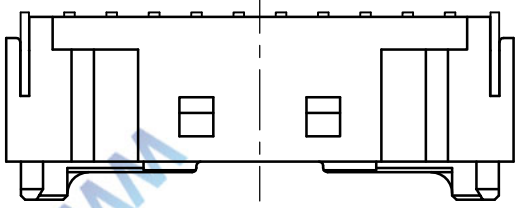
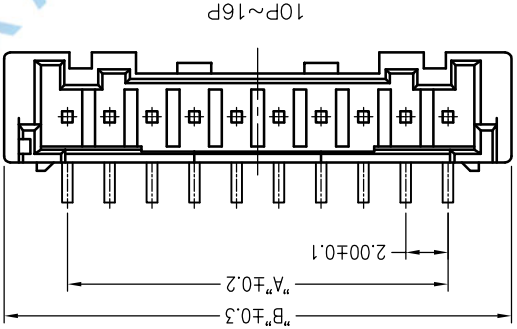
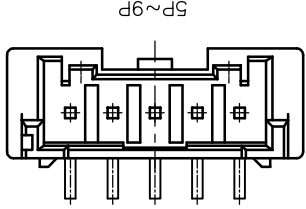
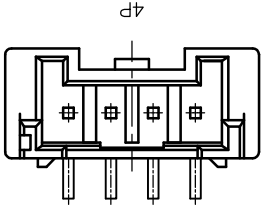
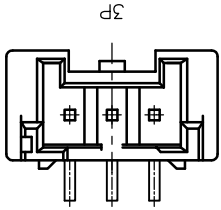
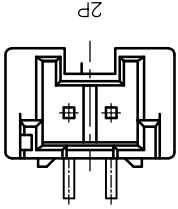


Poles	DIM. A	DIM. B	DIM. A	DIM. B
2P	2.0	8.0	10P	18.0
3P	4.0	10.0	11P	20.0
4P	6.0	12.0	12P	22.0
5P	8.0	14.0	13P	24.0
6P	10.0	16.0	14P	26.0
7P	12.0	18.0	15P	28.0
8P	14.0	20.0	16P	30.0
9P	16.0	22.0		



SPECIFICATIONS

1. Voltage rating: 250V AC, DC
2. Current rating: 3A, AC, DC
3. Withstanding Voltage: 1000V AC/minute
4. Insulation resistance: 800M min
5. Temperature range: -25 °C +85 °C
6. Contact resistance: 20m max

WAFER
 Housing Material: PA9T UL94V-0
 Pin Material: Phosphor Bronze or Brass
 Contact Area Plating: Plated Tin or Plated Gold
 Mates with: P2029 series Housing
 Poles: 02-16P
 Part No.: M2029VS-xx-9T-R

Pin位数
 R=卷装 无=管装

TOLERANCE UNLESS OTHERWISE	DRAWN	CK tan
X. ±0.30 X° ±5°	CHKD	
.X ±0.20 .X° ±2°	APPD	
.XX ±0.08 .XX° ±1°	VIEW	VIEW
.XXX ±0.03 .XXX° ±0.5°	VIEW	VIEW

XFCN 兴飞连接器有限公司		CONNECTORS XFCN CONNECTORS CO., LTD.
DATE	2010.4.12	SHEET
UNITS	mm	
SCALE	1:1	
DWG NO.	009	

PRODUCT NAME	M2029VS-xx-9T-R	PART. NO.	
DRWN	CK tan	VIEW	VIEW
CHKD		VIEW	VIEW
APPD		VIEW	VIEW

VER	A0	MODIFICATION	
DATE		DRAW	

A B C D E F G

A B C D E F G

10 9 8 7 6 5 4 3 2 1

X-ON Electronics

Largest Supplier of Electrical and Electronic Components

Click to view similar products for [Headers & Wire Housings](#) category:

Click to view products by [XFCN](#) manufacturer:

Other Similar products are found below :

[95000-104TRLF](#) [10135584-644402LF](#) [DF62W-EP2022PCA](#) [95000-106TRLF](#) [DF62W-2022SCA](#) [DF62W-EP2022PC](#) [2203348](#) [DF62W-2022SC](#) [1084018](#) [1029039](#) [1084017](#) [802-10-012-10-002000](#) [1112640](#) [1112639](#) [891-007-9SS-BST1T](#) [000-34000](#) [0008550134](#) [0009482033](#) [0009507031](#) [57102-F02-18ULF](#) [57102-S06-03LF](#) [57202-S52-04LF](#) [PCN6-15S-2.5E](#) [0039019024](#) [58102-G61-06LF](#) [582553-1](#) [0009485154](#) [0009508121](#) [0022285053](#) [0050291907](#) [018731A](#) [LY20-4P-DT1-P1E-BR](#) [02.125.8002.8](#) [60101931](#) [60598-1 \(Cut Strip\)](#) [M1625-3R/100](#) [61062-3](#) [61082-181009](#) [CSU011177004](#) [636-1427](#) [638009-1](#) [641938-9](#) [641991-4](#) [644168-1](#) [644827-2](#) [647662-1](#) [65039-019ELF](#) [65692-001LF](#) [65781-018](#) [65781-047](#)