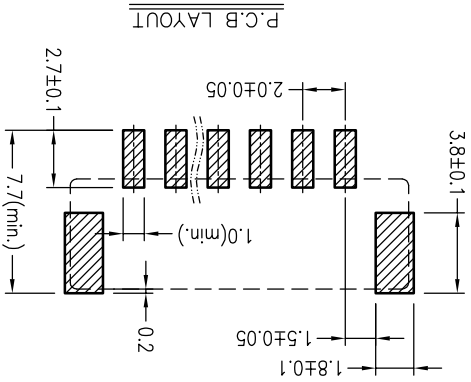
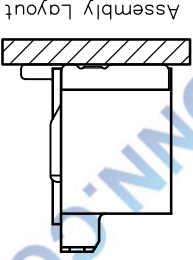
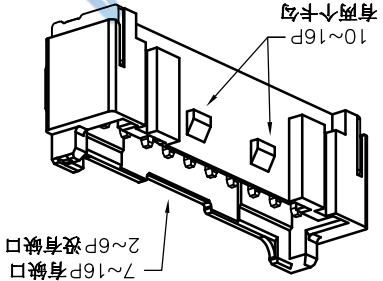
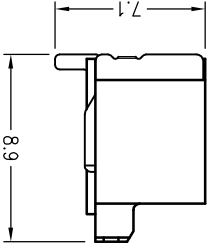
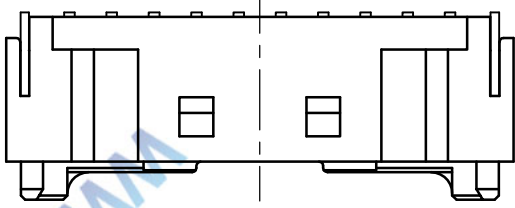
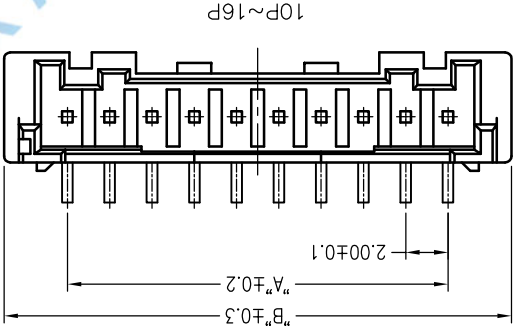
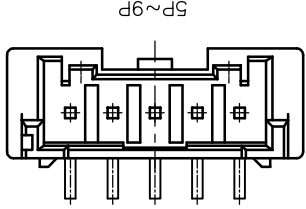
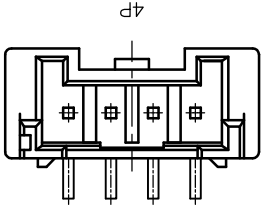
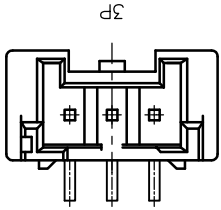
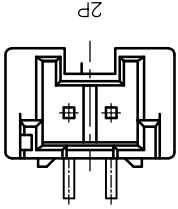


Poles	DIM.A	DIM.B	DIM.A	DIM.B
2P	2.0	10.0	10P	18.0
3P	4.0	11P	11P	20.0
4P	6.0	12P	12P	22.0
5P	8.0	13P	13P	24.0
6P	10.0	14P	14P	26.0
7P	12.0	15P	15P	28.0
8P	14.0	16P	16P	30.0
9P	16.0	22.0	22.0	36.0



SPECIFICATIONS

1. Voltage rating: 250V AC, DC
2. Current rating: 3A, AC, DC
3. Withstanding Voltage: 1000V AC/minute
4. Insulation resistance: 800M min
5. Temperature range: -25 °C +85 °C
6. Contact resistance: 20m max

WAFER
 Housing Material: PA9T UL94V-0
 Pin Material: Phosphor Bronze or Brass
 Contact Area Plating: Plated Tin or Plated Gold
 Mates with: P2029 series Housing
 Poles: 02-16P
 Part No.: M2029VS-xx-9T-R

Pin位数
 R=卷装 无=管装

TOLERANCE UNLESS OTHERWISE	DRAWN	CK tan
X. ±0.30 X° ±5°		
.X ±0.20 .X° ±2°		
.XX ±0.08 .XX° ±1°		
.XXX ±0.03 .XXX° ±0.5°		

DRWN	CK tan	CONNECTIONS XFCN CONNECTORS CO., LTD.	PRODUCT NAME	PART. NO.	M2029VS-xx-9T-R	DWG NO.	009
		XFCN 兴飞连接器有限公司	2.00mm Crimp Style Connectors				

VER	MODIFICATION	DATE
A0		

SHEET	DATE	UNITS	SCALE
1/1	2010.4.12	mm	1:1

X-ON Electronics

Largest Supplier of Electrical and Electronic Components

Click to view similar products for [Headers & Wire Housings](#) category:

Click to view products by [XFCN](#) manufacturer:

Other Similar products are found below :

[95000-104TRLF](#) [10135584-644402LF](#) [DF62W-EP2022PCA](#) [95000-106TRLF](#) [DF62W-2022SCA](#) [DF62W-EP2022PC](#) [2203348](#) [DF62W-2022SC](#) [1084018](#) [1029039](#) [1084017](#) [802-10-012-10-002000](#) [1112640](#) [1112639](#) [891-007-9SS-BST1T](#) [000-34000](#) [0008550134](#) [0009482033](#) [0009507031](#) [57102-F02-18ULF](#) [57102-S06-03LF](#) [57202-S52-04LF](#) [PCN6-15S-2.5E](#) [0039019024](#) [58102-G61-06LF](#) [582553-1](#) [0009485154](#) [0009508121](#) [0022285053](#) [0050291907](#) [018731A](#) [LY20-4P-DT1-P1E-BR](#) [02.125.8002.8](#) [60101931](#) [60598-1 \(Cut Strip\)](#) [M1625-3R/100](#) [61062-3](#) [61082-181009](#) [CSU011177004](#) [636-1427](#) [638009-1](#) [641938-9](#) [641991-4](#) [644168-1](#) [644827-2](#) [647662-1](#) [65039-019ELF](#) [65692-001LF](#) [65781-018](#) [65781-047](#)