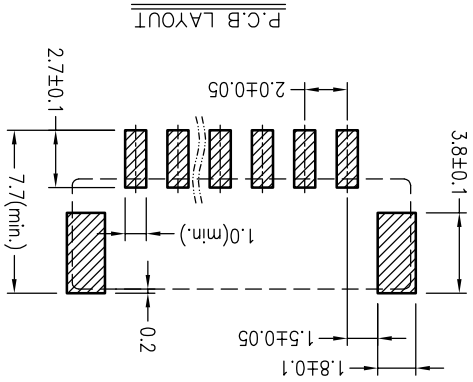
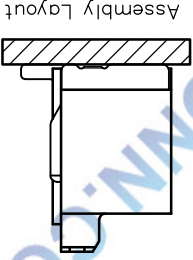
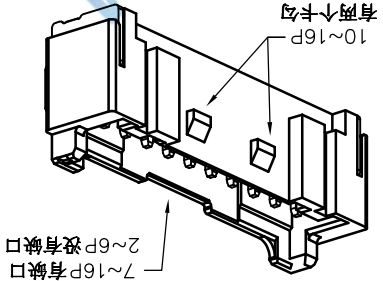
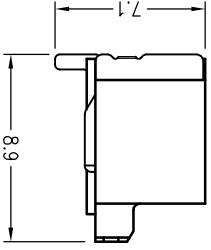
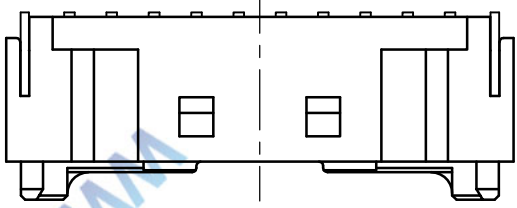
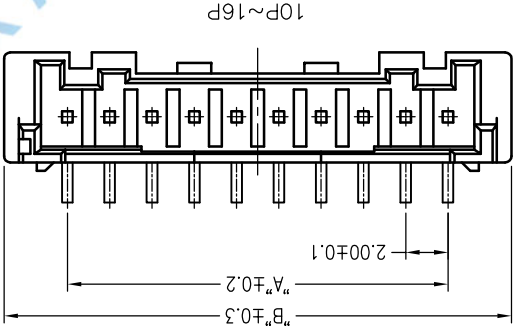
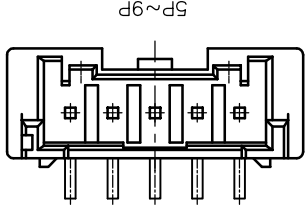
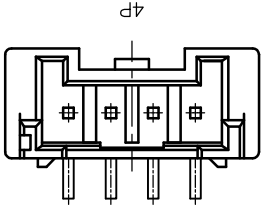
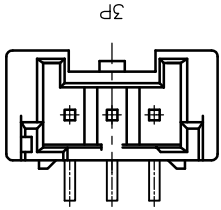
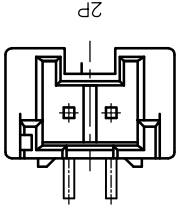


Poles	DIM.A	DIM.B	DIM.A	DIM.B
2P	2.0	8.0	10P	18.0
3P	4.0	10.0	11P	20.0
4P	6.0	12.0	12P	22.0
5P	8.0	14.0	13P	24.0
6P	10.0	16.0	14P	26.0
7P	12.0	18.0	15P	28.0
8P	14.0	20.0	16P	30.0
9P	16.0	22.0	17P	32.0
			18P	34.0
			19P	36.0
			20P	38.0



SPECIFICATIONS

1. Voltage rating: 250V AC, DC
2. Current rating: 3A, AC, DC
3. Withstanding Voltage: 1000V AC/minute
4. Insulation resistance: 800M min
5. Temperature range: -25 °C +85 °C
6. Contact resistance: 20m max

WAFER
 Housing Material: PA9T UL94V-0
 Pin Material: Phosphor Bronze or Brass
 Contact Area Plating: Plated Tin or Plated Gold
 Mates with: P2029 series Housing
 Poles: 02-16P
 Part No.: M2029VS-xx-9T-R

Pin位数
 R=卷装 无=管装

XFCN 兴飞连接器有限公司
 CONNECTORS XFCN CONNECTORS CO., LTD.

CK tan

TOLERANCE UNLESS OTHERWISE

VIEW: ±0.5°

APPD: ±1°

DATE: .XXX ±0.03

MODIFICATION

VER

A0

DWG NO.

009

SCALE

1:1

UNITS

mm

DATE

2010.4.12

SHEET

1/1

PRODUCT NAME

M2029VS-xx-9T-R

PART. NO.



VIEW

±0.5°

5

4

3

2

1

10

9

8

7

6

5

4

3

2

1

G

F

E

D

C

B

A

G

F

E

D

C

B

A

10

9

8

7

6

5

4

3

2

1

X-ON Electronics

Largest Supplier of Electrical and Electronic Components

Click to view similar products for [Headers & Wire Housings](#) category:

Click to view products by [XFCN](#) manufacturer:

Other Similar products are found below :

[95000-104TRLF](#) [10135584-644402LF](#) [DF62W-EP2022PCA](#) [95000-106TRLF](#) [DF62W-2022SCA](#) [DF62W-EP2022PC](#) [2203348](#) [DF62W-2022SC](#) [1084018](#) [1029039](#) [1084017](#) [802-10-012-10-002000](#) [1112640](#) [1112639](#) [891-007-9SS-BST1T](#) [000-34000](#) [0008550134](#) [0009482033](#) [0009507031](#) [57102-F02-18ULF](#) [57102-S06-03LF](#) [57202-S52-04LF](#) [PCN6-15S-2.5E](#) [0039019024](#) [58102-G61-06LF](#) [582553-1](#) [0009485154](#) [0009508121](#) [0022285053](#) [0050291907](#) [018731A](#) [LY20-4P-DT1-P1E-BR](#) [02.125.8002.8](#) [60101931](#) [60598-1 \(Cut Strip\)](#) [M1625-3R/100](#) [61062-3](#) [61082-181009](#) [CSU011177004](#) [636-1427](#) [638009-1](#) [641938-9](#) [641991-4](#) [644168-1](#) [644827-2](#) [647662-1](#) [65039-019ELF](#) [65692-001LF](#) [65781-018](#) [65781-047](#)