

环保物料

TEL:0769-82001899

Technical Data

Material:

Pin(outer sleeve):Brass,machined CuZn38Pb2

Plating(outer sleeve):

Tin Plated:2μm/80μ"NI, 5μm/200μ"Sn

Gold Plated:2μm"/80μ"Ni, 0.8μ" gold

Plating(Contact ):2μm/80μ"NI, gold or Tin plated

Insulator:PPS UL94V-0

Clip(Contact 4 Finger):Beryllium copper,heat teated

Mating pin∅:0.40mm/0.66mm

Electrical:

Current rating:3Amps/contact max.

Contact resistance:≤4mΩ/contact

Insulation resistance:≥1000MΩ at V=100V

Dlelectric Withstanding Voltage:1000V AV Min

Operaling voltage:60VAC/DC

Mechanical:

-Insertion:0.7N typ

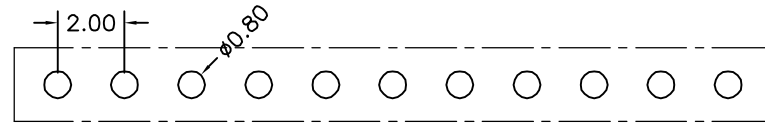
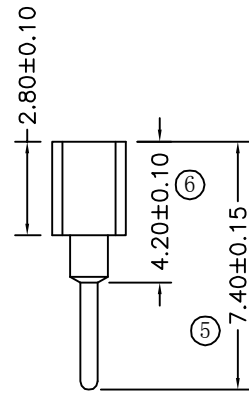
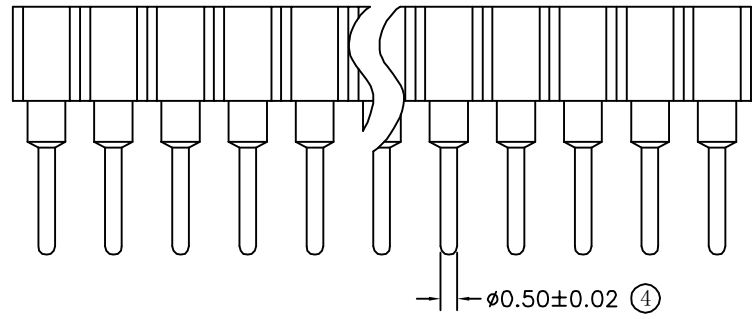
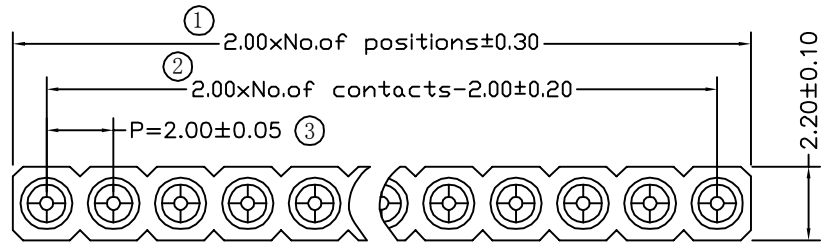
-Withdrawal:0.4N typ

Mechanical lige:min 500 cycle

Operaling temperature:-40° C to+105° C

Soldering temperature:+255° C

Critical Dimensions:⊛



P. C. B LAYOUT

				TOLERANCE UNLESS OTHERWISE		DRAWN	CK tan	<b>XFCN</b> 兴飞连接器有限公司 XFCN CONNECTORS CO.,LTD.	SHEET	1/1	
				X. ±0.30	X° ±5°	CHKD			DATE	2020.04.12	
				.X ±0.20	.X° ±2°	APPD			UNITS	mm	
				.XX ±0.08	.XX° ±1°	VIEW	⊕		SCALE	1:1	
AO	MODIFICATION	DRAW	DATE	.XXX ±0.03	.XXX° ±0.5°	PRODUCT NAME	2.00mm Machined Female Header	PART. NO.	MF200V-11-xx-0740	DWG. NO.	009

## X-ON Electronics

Largest Supplier of Electrical and Electronic Components

*Click to view similar products for [Headers & Wire Housings](#) category:*

*Click to view products by [XFCN](#) manufacturer:*

Other Similar products are found below :

[57102-F02-18ULF](#) [58102-G61-06LF](#) [0009485154](#) [009176003701906](#) [0050291907](#) [00-9021-0611-00-339](#) [02.125.8002.8](#) [609-3404](#) [61062-3](#)  
[622-0430](#) [622-3653LF](#) [63453-116](#) [636-1030](#) [636-1427](#) [636-3427](#) [636-4007](#) [641938-9](#) [644827-2](#) [65495-038](#) [65692-001LF](#) [65781-018](#)  
[65781-047](#) [65817-010LF](#) [65817-015LF](#) [66207-023LF](#) [67016-026LF](#) [67095-007LF](#) [68631-112](#) [68645-018](#) [68648-049](#) [699319-000](#)  
[70.362.1628.0](#) [70-4210](#) [70-4226B](#) [70-4853B](#) [707-5020](#) [707-5028](#) [71.350.2428.0](#) [71961-016LF](#) [733-134](#) [754199-000](#) [760-3052](#) [787-8014-00](#)  
[FCN-367T-T012/H](#) [80.063.4001.1](#) [800-90-001-10-001000](#) [800-90-010-10-002000](#) [801-43-002-10-013000](#) [801-43-006-10-002000](#)  
[803-41-018-10-001000](#)