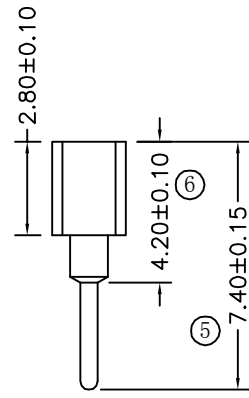
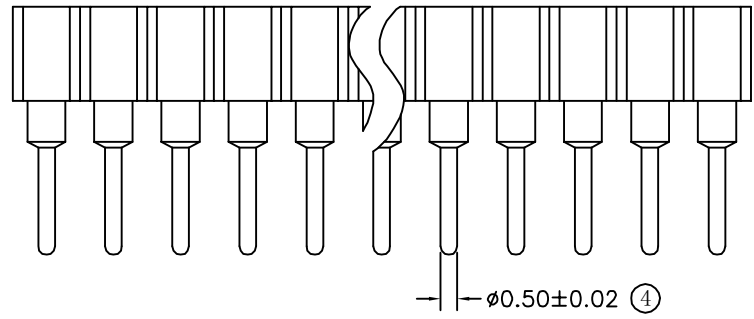
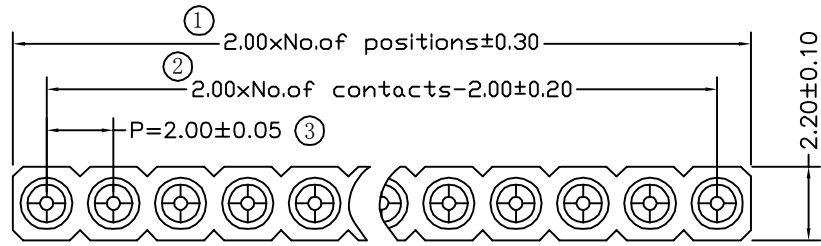


环保物料

TEL:0769-82001899



Technical Data

Material:

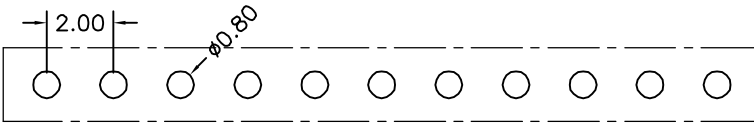
Pin(outer sleeve):Brass,machined CuZn38Pb2
 Plating(outer sleeve):
 Tin Plated:2 μ m/80 μ "Ni, 5 μ m/200 μ "Sn
 Gold Plated:2 μ m"/80 μ "Ni, 0.8 μ " gold
 Plating(Contact):2 μ m/80 μ "Ni, gold or Tin plated
 Insulator:PPS UL94V-0
 Clip(Contact 4 Finger):Beryllium copper,heat teated
 Mating pin ϕ :0.40mm/0.66mm

Electrical:

Current rating:3Amps/contact max.
 Contact resistance: $\leq 4m\Omega$ /contact
 Insulation resistance: $\geq 1000M\Omega$ at V=100V
 Dielectric Withstanding Voltage:1000V AV Min
 Operating voltage:60VAC/DC

Mechanical:

-Insertion:0.7N typ
 -Withdrawal:0.4N typ
 Mechanical life:min 500 cycle
 Operating temperature:-40 $^{\circ}$ C to+105 $^{\circ}$ C
 Soldering temperature:+255 $^{\circ}$ C
 Critical Dimensions:(*)



P. C. B LAYOUT

				TOLERANCE UNLESS OTHERWISE		DRAWN	CK tan	XFCN 兴飞连接器有限公司 XFCN CONNECTORS CO.,LTD.	SHEET	1/1	
				X.	± 0.30	X $^{\circ}$	$\pm 5^{\circ}$		CHKD	DATE	2020.04.12
				.X	± 0.20	.X $^{\circ}$	$\pm 2^{\circ}$		APPD	UNITS	mm
				.XX	± 0.08	.XX $^{\circ}$	$\pm 1^{\circ}$		VIEW	SCALE	1:1
				.XXX	± 0.03	.XXX $^{\circ}$	$\pm 0.5^{\circ}$		PRODUCT NAME	2.00mm Machined Female Header	
AO	MODIFICATION	DRAW	DATE			PART. NO.	MF200V-11-xx-0740	DWG. NO.	009		

X-ON Electronics

Largest Supplier of Electrical and Electronic Components

Click to view similar products for [Headers & Wire Housings](#) category:

Click to view products by [XFCN](#) manufacturer:

Other Similar products are found below :

[57102-F02-18ULF](#) [58102-G61-06LF](#) [0009485154](#) [009176003701906](#) [0050291907](#) [02.125.8002.8](#) [609-3404](#) [61062-3](#) [622-0430](#) [622-3653LF](#)
[63453-116](#) [636-1030](#) [636-1427](#) [636-3427](#) [636-4007](#) [641938-9](#) [644827-2](#) [65495-038](#) [65692-001LF](#) [65781-018](#) [65781-047](#) [65817-010LF](#)
[65817-015LF](#) [66207-023LF](#) [67016-026LF](#) [67095-007LF](#) [68631-112](#) [68645-018](#) [68648-049](#) [699319-000](#) [70.362.1628.0](#) [70-4210](#) [70-4226B](#)
[70-4853B](#) [707-5020](#) [707-5028](#) [71.350.2428.0](#) [71961-016LF](#) [733-134](#) [754199-000](#) [760-3052](#) [787-8014-00](#) [FCN-367T-T012/H](#) [80.063.4001.1](#)
[800-90-010-10-002000](#) [801-43-002-10-013000](#) [801-43-006-10-002000](#) [803-41-018-10-001000](#) [803-43-014-20-001000](#) [803-43-024-10-001000](#)