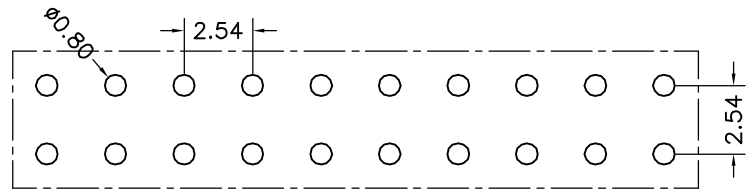
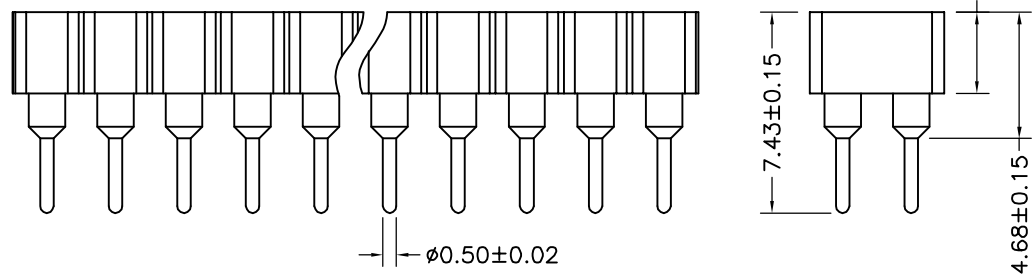
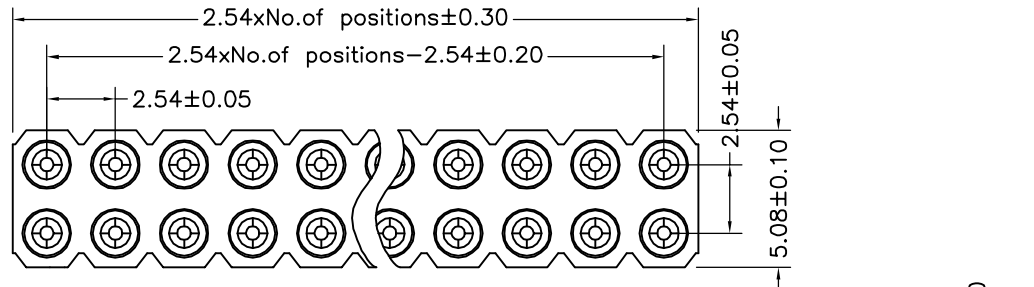


环保物料

TEL:0769-82001899



P. C. B LAYOUT

Technical Data

Material:  
 Pin(outer sleeve): Brass, machined CuZn38Pb2  
 Plating(outer sleeve):  
 Tin Plated: 2µm/80µm Ni, 5µm/200µm Sn  
 Gold Plated: 2µm/80µm Ni, 0.8µm gold  
 Plating(Contact): 2µm/80µm Ni, gold or Tin plated  
 Insulator: PPS UL94V-0  
 Clip(Contact 4 Finger): Beryllium copper, heat treated

Electrical:

Current rating: 3Amps/contact max.  
 Contact resistance: ≤4mΩ/contact  
 Insulation resistance: ≥1000MΩ at V=100V  
 Dielectric Withstanding Voltage: 1000V AV Min  
 Operating voltage: 60VAC/DC

Mechanical:

Average Insertion force with steel pin of Ø0.66mm/0.38": <250g  
 Average withdrawal force with steel pin of Ø0.66mm/0.38": <70g  
 Mechanical life cycle: min 200  
 Operating temperature: -40 °C to +105 °C  
 Soldering temperature: +255 °C

				TOLERANCE UNLESS OTHERWISE		DRAWN	CK tan	<b>XFCN</b> 兴飞连接器有限公司 XFCN CONNECTORS CO.,LTD.	SHEET	1/1
				X. ±0.30	X° ±5°	CHKD			DATE	2020.04.12
				.X ±0.20	.X° ±2°	APPD			UNITS	mm
				.XX ±0.08	.XX° ±1°	VIEW	⊕		SCALE	1:1
AO	MODIFICATION	DRAW	DATE	.XXX ±0.03	.XXX° ±0.5°			PRODUCT NAME	2.54mm Machined Female Header	
VER								PART. NO.	MF254V-12-xx-0743	
1	2	3	4	5	6	7	8	9	DWG NO.	009

## X-ON Electronics

Largest Supplier of Electrical and Electronic Components

*Click to view similar products for [Headers & Wire Housings](#) category:*

*Click to view products by [XFCN](#) manufacturer:*

Other Similar products are found below :

[57102-F02-18ULF](#) [58102-G61-06LF](#) [582553-1](#) [009176003701906](#) [0050291907](#) [02.125.8002.8](#) [609-3404](#) [61062-3](#) [622-0430](#) [622-3653LF](#)  
[63453-116](#) [636-1030](#) [636-1427](#) [636-3427](#) [636-4007](#) [641938-9](#) [65495-038](#) [65692-001LF](#) [65781-018](#) [65781-047](#) [65817-010LF](#) [65817-015LF](#)  
[66207-023LF](#) [67016-026LF](#) [67095-007LF](#) [68631-112](#) [68645-018](#) [68648-049](#) [699319-000](#) [M90C108951C](#) [70.362.1628.0](#) [70-4210](#) [70-4226B](#)  
[70-4853B](#) [707-5020](#) [707-5028](#) [71.350.2428.0](#) [71961-016LF](#) [733-134](#) [754199-000](#) [760-3052](#) [787-8014-00](#) [FCN-367T-T012/H](#)  
[80.063.4001.1](#) [800-90-001-10-001000](#) [801-43-002-10-013000](#) [801-43-006-10-002000](#) [803-41-018-10-001000](#) [803-43-014-20-001000](#)  
[803-43-024-10-001000](#)