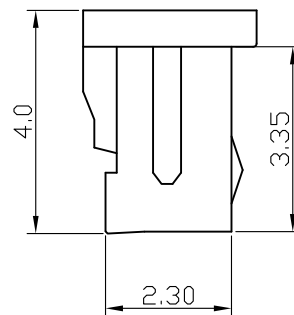
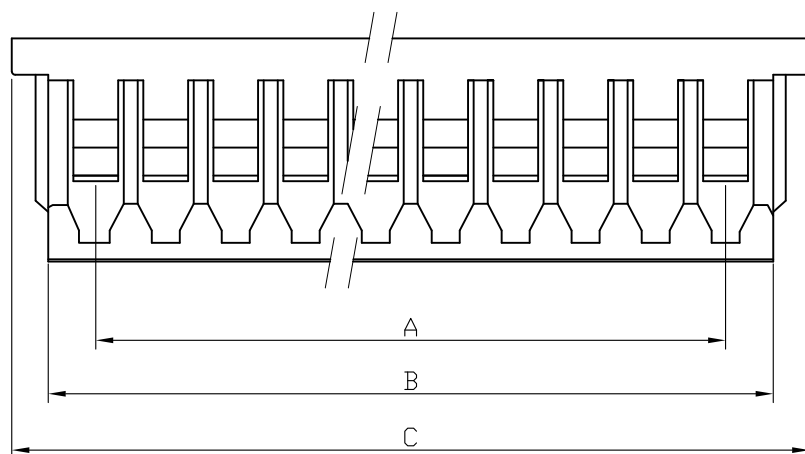
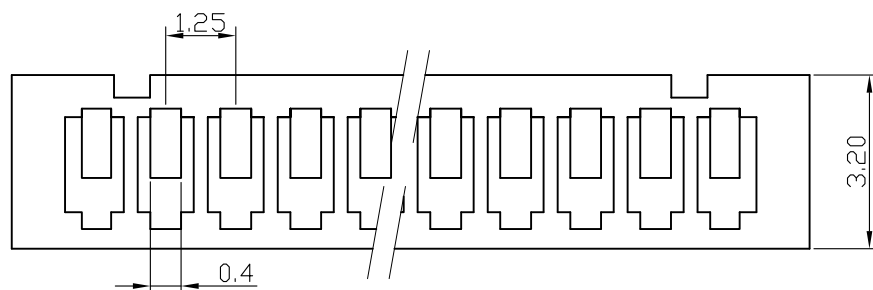


环保物料

TEL:0769-82001899



### Specifications:

Electrical  
 Rated Voltage: 100V AC,DC  
 Rated Current: 1A  
 Withstand Voltage: 250V AC/minute  
 Contact Resistance: 20mΩ (MAX.)  
 Insulation Resistance: 100MΩ (MIN.)  
 Temperature Range: -25°C~+85°C

### Material and Finish:

Circuits: 02-15  
 Material: NYLON 66 HF UL94V-0

### Dimensional & Ordering Information:

cir-cuits	Part No.	Dimension mm			BAG/pcs
		A	B	C	
02	02	1.25	2.95	4.25	1000
03	03	2.50	4.20	5.50	1000
04	04	3.75	5.45	6.75	1000
05	05	5.00	6.70	8.0	1000
06	06	6.25	7.95	9.25	1000
07	07	7.50	9.20	10.50	1000
08	08	8.75	10.45	11.75	1000
09	09	10.00	11.70	13.00	1000
10	10	11.25	12.95	14.25	1000
11	11	12.50	14.20	15.50	1000
12	12	13.75	15.45	16.75	1000
13	13	15.00	16.70	18.00	1000
14	14	16.25	17.95	19.25	1000
15	15	17.50	19.20	20.50	1000

				TOLERANCE UNLESS OTHERWISE		DRAWN	CK tan	<b>XFCN兴飞连接器有限公司</b> CONNECTORS XFCN CONNECTORS CO., LTD.		SHEET	1/1
				X.	±0.30	X°	±5°			CHKD	DATE
				.X	±0.20	.X°	±2°	APPD	PRODUCT NAME	1.25mm Crimp Style Connectors	
				.XX	±0.08	.XX°	±1°	VIEW	PART. NO.	P1250-XX-N0	
				.XXX	±0.03	.XXX°	±0.5°			UNITS	mm
										SCALE	1:1
										DWG NO.	009
AO	MODIFICATION	DRAW	DATE								
VER											

## X-ON Electronics

Largest Supplier of Electrical and Electronic Components

*Click to view similar products for [Headers & Wire Housings](#) category:*

*Click to view products by [XFCN](#) manufacturer:*

Other Similar products are found below :

[95000-104TRLF](#) [10135584-644402LF](#) [DF62W-EP2022PCA](#) [95000-106TRLF](#) [DF62W-2022SCA](#) [DF62W-EP2022PC](#) [2203348](#) [DF62W-2022SC](#) [1084018](#) [1029039](#) [1084017](#) [802-10-012-10-002000](#) [1112640](#) [1112639](#) [891-007-9SS-BST1T](#) [000-34000](#) [0008550134](#) [0009482033](#) [0009507031](#) [57102-F02-18ULF](#) [57102-S06-03LF](#) [57202-S52-04LF](#) [PCN6-15S-2.5E](#) [0039019024](#) [58102-G61-06LF](#) [582553-1](#) [0009485154](#) [0009508121](#) [0022285053](#) [0050291907](#) [018731A](#) [LY20-4P-DT1-P1E-BR](#) [02.125.8002.8](#) [60101931](#) [60598-1 \(Cut Strip\)](#) [M1625-3R/100](#) [61062-3](#) [61082-181009](#) [CSU011177004](#) [636-1427](#) [638009-1](#) [641938-9](#) [641991-4](#) [644168-1](#) [644827-2](#) [647662-1](#) [65039-019ELF](#) [65692-001LF](#) [65781-018](#) [65781-047](#)