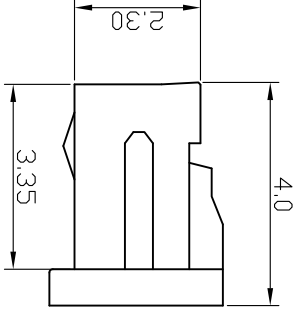
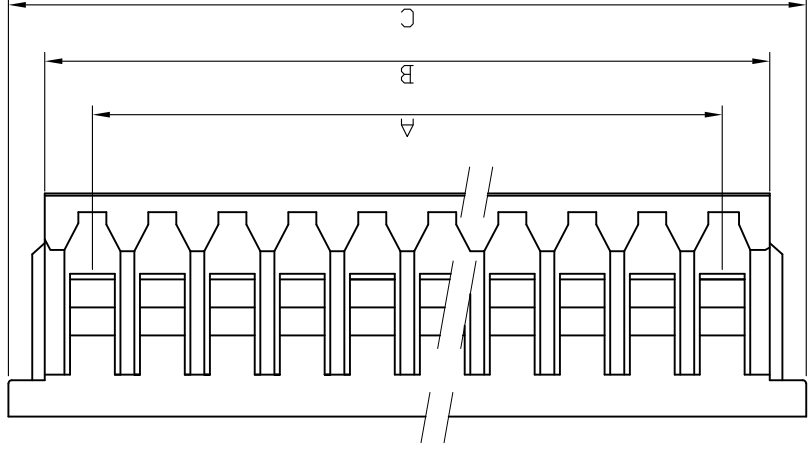
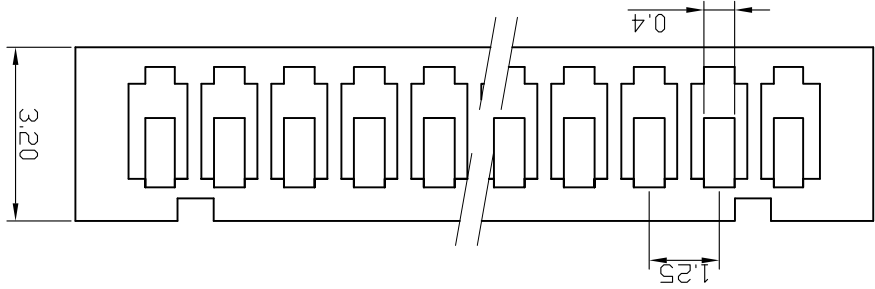


### Specifications:

Electrical  
 Rated Voltage: 100V AC,DC  
 Rated Current: 1A  
 Withstand Voltage: 250V AC/minute  
 Contact Resistance: 20mΩ (MAX.)  
 Insulation Resistance: 100MΩ (MIN.)  
 Temperature Range: -25°C~+85°C  
 Material and Finish:  
 Circuits: 02-15  
 Material: NYLON 66 HF UL94V-0

### Dimensional & Ordering Information:

Part No.	Dimension mm			cir-cuits
	A	B	C	
02	1.25	2.95	4.25	1000
03	2.50	4.20	5.50	1000
04	3.75	5.45	6.75	1000
05	5.00	6.70	8.0	1000
06	6.25	7.95	9.25	1000
07	7.50	9.20	10.50	1000
08	8.75	10.45	11.75	1000
09	10.00	11.70	13.00	1000
10	11.25	12.95	14.25	1000
11	12.50	14.20	15.50	1000
12	13.75	15.45	16.75	1000
13	15.00	16.70	18.00	1000
14	16.25	17.95	19.25	1000
15	17.50	19.20	20.50	1000



VER A0	MODIFICATION			DATE	TOLERANCE UNLESS OTHERWISE DRAWN CK tan	VIEW ±0.5°	PART. NO.	PRODUCT NAME 1.25mm Crimp Style Connectors	Dwg NO. 009
	DATE			SCALE 1:1					
G	DRAWN	DATE	UNITS mm	SHEET 1/1	CHKD	APPD	CONNECTORS XFCN CONNECTORS CO., LTD. XFCN 兴飞连接器有限公司	DATE 2010.4.12	Dwg NO. 009

10 9 8 7 6 5 4 3 2 1

A B C D E F G

## X-ON Electronics

Largest Supplier of Electrical and Electronic Components

*Click to view similar products for [Headers & Wire Housings](#) category:*

*Click to view products by [XFCN](#) manufacturer:*

Other Similar products are found below :

[95000-104TRLF](#) [10135584-644402LF](#) [DF62W-EP2022PCA](#) [95000-106TRLF](#) [DF62W-2022SCA](#) [DF62W-EP2022PC](#) [2203348](#) [DF62W-2022SC](#) [1084018](#) [1029039](#) [1084017](#) [802-10-012-10-002000](#) [1112640](#) [1112639](#) [891-007-9SS-BST1T](#) [000-34000](#) [0008550134](#) [0009482033](#) [0009507031](#) [57102-F02-18ULF](#) [57102-S06-03LF](#) [57202-S52-04LF](#) [PCN6-15S-2.5E](#) [0039019024](#) [58102-G61-06LF](#) [582553-1](#) [0009485154](#) [0009508121](#) [0022285053](#) [0050291907](#) [018731A](#) [LY20-4P-DT1-P1E-BR](#) [02.125.8002.8](#) [60101931](#) [60598-1 \(Cut Strip\)](#) [M1625-3R/100](#) [61062-3](#) [61082-181009](#) [CSU011177004](#) [636-1427](#) [638009-1](#) [641938-9](#) [641991-4](#) [644168-1](#) [644827-2](#) [647662-1](#) [65039-019ELF](#) [65692-001LF](#) [65781-018](#) [65781-047](#)