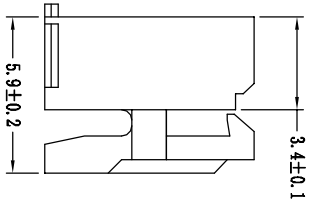
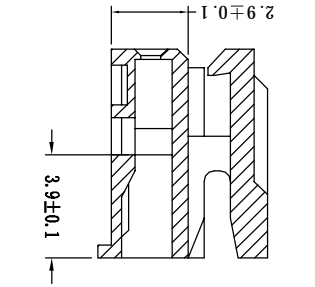
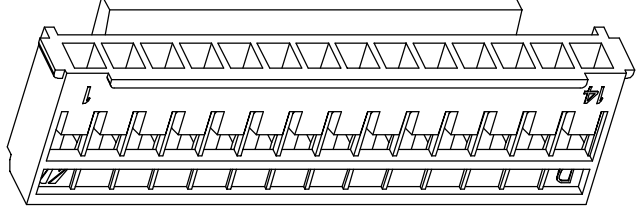
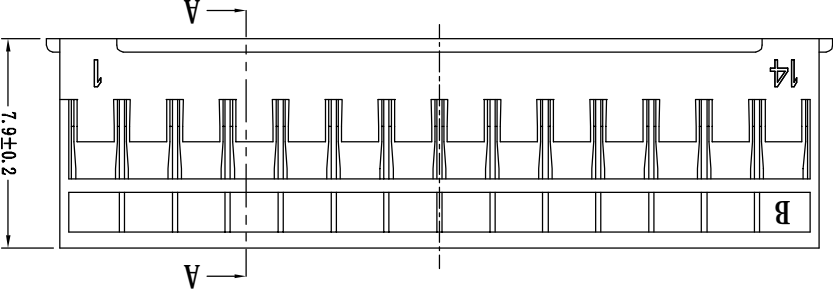
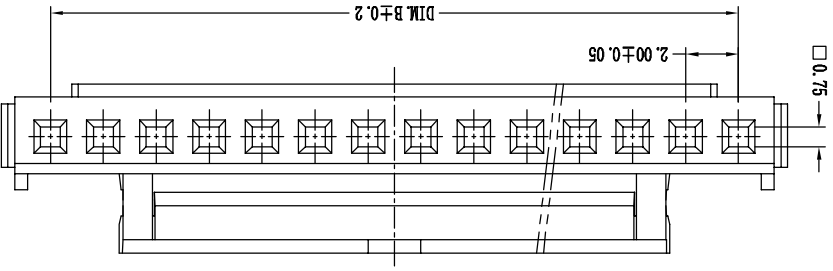
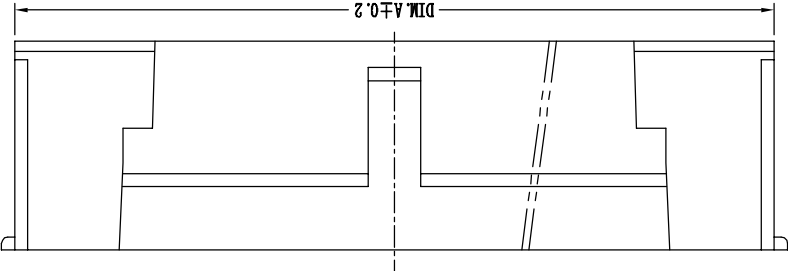


| No. of DIMENSIONS | Contacts |       |
|-------------------|----------|-------|
|                   | DIM A    | DIM B |
| 02                | 4.70     | 2.00  |
| 03                | 6.70     | 4.00  |
| 04                | 8.70     | 6.00  |
| 05                | 10.70    | 8.00  |
| 06                | 12.70    | 10.00 |
| 07                | 14.70    | 12.00 |
| 08                | 16.70    | 14.00 |
| 09                | 18.70    | 16.00 |
| 10                | 20.70    | 18.00 |
| 11                | 22.70    | 20.00 |
| 12                | 24.70    | 22.00 |
| 13                | 26.70    | 24.00 |
| 14                | 28.70    | 26.00 |
| 15                | 30.70    | 28.00 |
| 16                | 32.70    | 30.00 |



- NOTE: UNLESS OTHERWISE SPECIFIED
- MATERIAL P/N: Nylon, UL94V-0 RATED COLOR WHITE
  - DIM MARKED ... TO BE CHECKED BY QC
  - THE CAV. NO AND MARK IS LOCATED APPROXIMATELY AS SHOWN WITH MAX. HEIGHT 0.03 mm ABOVE SURFACE AND THE TEXT HEIGHT IS ABOUT 1.5 mm
  - THE FOLLOWING CONDITION SHALL BE MET:
    - FLASH: 0.03 mm THICK BY 0.05 mm MAX.
    - EJECTION MARK: 0.10 mm MAX.
    - MISMATCH IN PARTING LINE: 0.05 mm MAX.
    - GATE PROTRUSION OR DEPRESSION: 0.05 mm MAX.

| VER | MODIFICATION |  | DRAW | DATE | TOLERANCE UNLESS OTHERWISE |             | DRAWN | CK tan | CONNECTIONS XFCN CONNECTORS CO., LTD. | XFCN 兴飞连接器有限公司                | SHEET | DATE      | UNITS | SCALE | Dwg. NO. |
|-----|--------------|--|------|------|----------------------------|-------------|-------|--------|---------------------------------------|-------------------------------|-------|-----------|-------|-------|----------|
|     | A0           |  |      |      |                            |             |       |        |                                       |                               |       |           |       |       |          |
|     |              |  |      |      | .XXX ±0.03                 | .XXX° ±0.5° |       |        | PART. NO.                             | P2016-XX-N0                   | 1/1   | 2010.4.12 | mm    | 1:1   | 009      |
|     |              |  |      |      | .XX ±0.08                  | .XX° ±1.    | Appd  |        | PRODUCT NAME                          | 2.00mm Crimp Style Connectors |       |           |       |       |          |
|     |              |  |      |      | .X ±0.20                   | .X° ±2.     | CHKD  |        |                                       |                               |       |           |       |       |          |
|     |              |  |      |      | X. ±0.30                   | X° ±5.      | DRAWN | CK tan |                                       |                               |       |           |       |       |          |

Grid coordinates: A, B, C, D, E, F, G (vertical); 1, 2, 3, 4, 5, 6, 7, 8, 9, 10 (horizontal)

## X-ON Electronics

Largest Supplier of Electrical and Electronic Components

*Click to view similar products for [Headers & Wire Housings](#) category:*

*Click to view products by [XFCN](#) manufacturer:*

Other Similar products are found below :

[95000-104TRLF](#) [10135584-644402LF](#) [DF62W-EP2022PCA](#) [95000-106TRLF](#) [DF62W-2022SCA](#) [DF62W-EP2022PC](#) [2203348](#) [DF62W-2022SC](#) [1084018](#) [1029039](#) [1084017](#) [802-10-012-10-002000](#) [1112640](#) [1112639](#) [891-007-9SS-BST1T](#) [000-34000](#) [0008550134](#) [0009482033](#) [0009507031](#) [57102-F02-18ULF](#) [57102-S06-03LF](#) [57202-S52-04LF](#) [PCN6-15S-2.5E](#) [0039019024](#) [58102-G61-06LF](#) [582553-1](#) [0009485154](#) [0009508121](#) [0022285053](#) [0050291907](#) [018731A](#) [LY20-4P-DT1-P1E-BR](#) [02.125.8002.8](#) [60101931](#) [60598-1 \(Cut Strip\)](#) [M1625-3R/100](#) [61062-3](#) [61082-181009](#) [CSU011177004](#) [636-1427](#) [638009-1](#) [641938-9](#) [641991-4](#) [644168-1](#) [644827-2](#) [647662-1](#) [65039-019ELF](#) [65692-001LF](#) [65781-018](#) [65781-047](#)