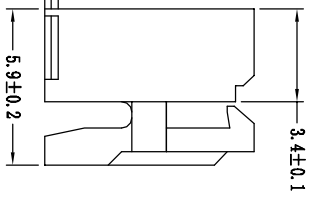
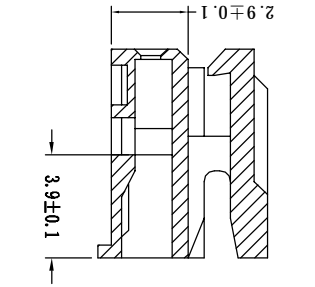
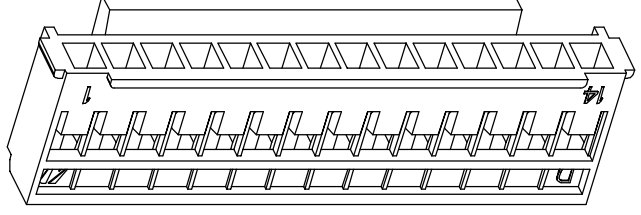
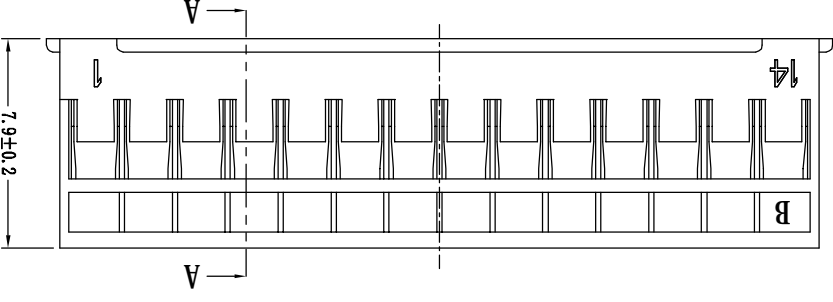
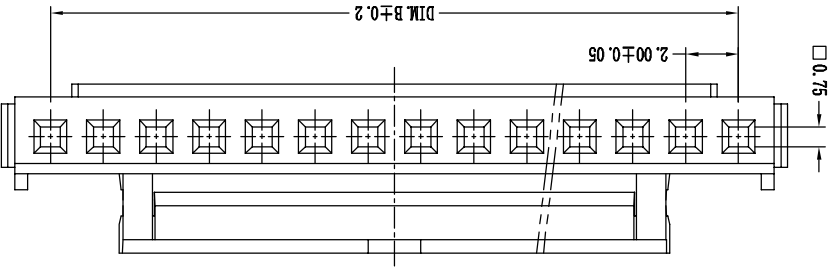
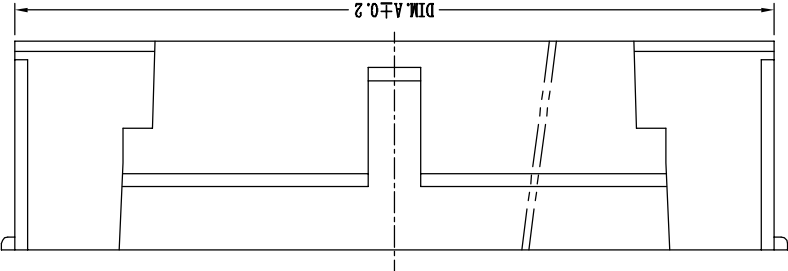


No. of DIMENSIONS	Contacts	
	DIM A	DIM B
02	4.70	2.00
03	6.70	4.00
04	8.70	6.00
05	10.70	8.00
06	12.70	10.00
07	14.70	12.00
08	16.70	14.00
09	18.70	16.00
10	20.70	18.00
11	22.70	20.00
12	24.70	22.00
13	26.70	24.00
14	28.70	26.00
15	30.70	28.00
16	32.70	30.00



- NOTE: UNLESS OTHERWISE SPECIFIED
- MATERIAL P/N: Nylon, UL94V-0 RATED COLOR WHITE
 - DIM MARKED ... TO BE CHECKED BY QC
 - THE CAV. NO AND MARK IS LOCATED APPROXIMATELY AS SHOWN WITH MAX. HEIGHT 0.03 mm ABOVE SURFACE AND THE TEXT HEIGHT IS ABOUT 1.5 mm
 - THE FOLLOWING CONDITION SHALL BE MET:
 - FLASH: 0.03 mm THICK BY 0.05 mm MAX.
 - EJECTION MARK: 0.10 mm MAX.
 - MISMATCH IN PARTING LINE: 0.05 mm MAX.
 - GATE PROTRUSION OR DEPRESSION: 0.05 mm MAX.

VER	MODIFICATION			DRAWN	DATE	TOLERANCE UNLESS OTHERWISE SPECIFIED	DRAWN	CK tan	CONNECTIONS XFCN CONNECTORS CO., LTD.	XFCN 兴飞连接器有限公司	SHEET	DATE	UNITS	SCALE	DWG NO.
	NO.	DESCRIPTION	DATE												
A0						X. ±0.30	X. ±2.	.XX ±1.	.XX ±0.08	.XXX ±0.03	VIEW	Φ	PART. NO.	P2016-XX-N0	009
						X. ±0.20	.X ±2.	.XX ±1.	.XX ±0.08	.XXX ±0.03	VIEW	Φ	PART. NO.	P2016-XX-N0	009
						X. ±0.30	.X ±2.	.XX ±1.	.XX ±0.08	.XXX ±0.03	VIEW	Φ	PART. NO.	P2016-XX-N0	009
						X. ±0.30	.X ±2.	.XX ±1.	.XX ±0.08	.XXX ±0.03	VIEW	Φ	PART. NO.	P2016-XX-N0	009

A B C D E F G

1 2 3 4 5 6 7 8 9 10

X-ON Electronics

Largest Supplier of Electrical and Electronic Components

Click to view similar products for [Headers & Wire Housings](#) category:

Click to view products by [XFCN](#) manufacturer:

Other Similar products are found below :

[95000-104TRLF](#) [10135584-644402LF](#) [DF62W-EP2022PCA](#) [95000-106TRLF](#) [DF62W-2022SCA](#) [DF62W-EP2022PC](#) [2203348](#) [DF62W-2022SC](#) [1084018](#) [1029039](#) [1084017](#) [802-10-012-10-002000](#) [1112640](#) [1112639](#) [891-007-9SS-BST1T](#) [000-34000](#) [0008550134](#) [0009482033](#) [0009507031](#) [57102-F02-18ULF](#) [57102-S06-03LF](#) [57202-S52-04LF](#) [PCN6-15S-2.5E](#) [0039019024](#) [58102-G61-06LF](#) [582553-1](#) [0009485154](#) [0009508121](#) [0022285053](#) [0050291907](#) [018731A](#) [LY20-4P-DT1-P1E-BR](#) [02.125.8002.8](#) [60101931](#) [60598-1 \(Cut Strip\)](#) [M1625-3R/100](#) [61062-3](#) [61082-181009](#) [CSU011177004](#) [636-1427](#) [638009-1](#) [641938-9](#) [641991-4](#) [644168-1](#) [644827-2](#) [647662-1](#) [65039-019ELF](#) [65692-001LF](#) [65781-018](#) [65781-047](#)