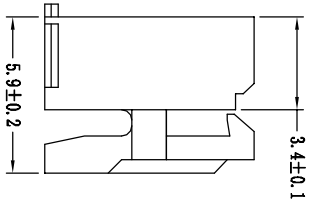
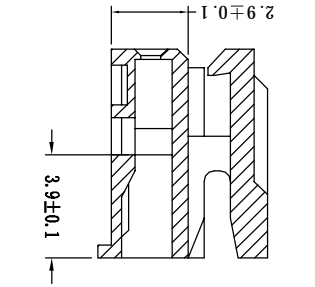
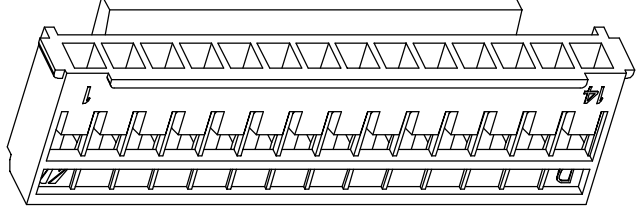
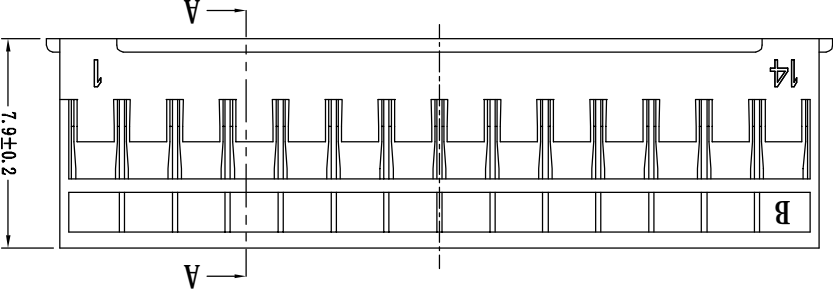
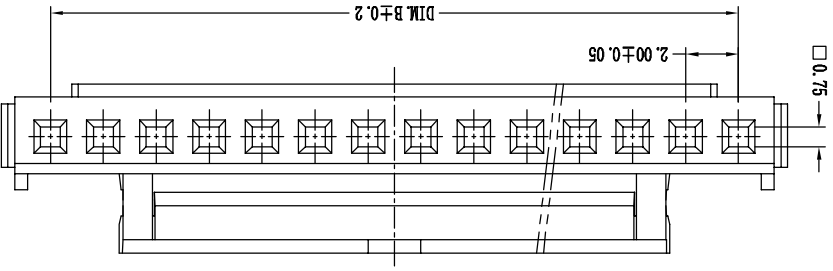
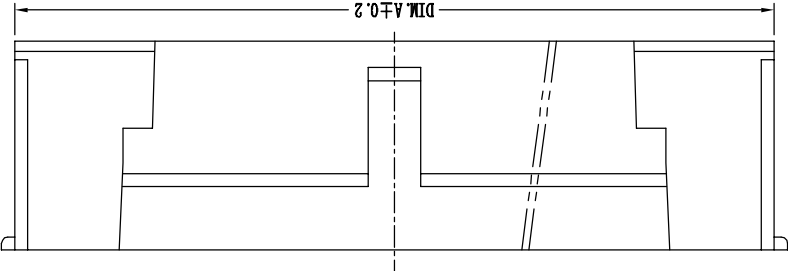


|                   |          |
|-------------------|----------|
| No. of DIMENSIONS | Contacts |
| DIM A             | DIM B    |

|    |       |       |
|----|-------|-------|
| 16 | 32.70 | 30.00 |
| 15 | 30.70 | 28.00 |
| 14 | 28.70 | 26.00 |
| 13 | 26.70 | 24.00 |
| 12 | 24.70 | 22.00 |
| 11 | 22.70 | 20.00 |
| 10 | 20.70 | 18.00 |
| 09 | 18.70 | 16.00 |
| 08 | 16.70 | 14.00 |
| 07 | 14.70 | 12.00 |
| 06 | 12.70 | 10.00 |
| 05 | 10.70 | 8.00  |
| 04 | 8.70  | 6.00  |
| 03 | 6.70  | 4.00  |
| 02 | 4.70  | 2.00  |



- NOTE: UNLESS OTHERWISE SPECIFIED
- MATERIAL P/N: Nylon, UL94V-0 RATED COLOR WHITE
  - DIM MARKED ... TO BE CHECKED BY QC
  - THE CAV. NO AND MARK IS LOCATED APPROXIMATELY AS SHOWN WITH MAX. HEIGHT 0.03 mm ABOVE SURFACE AND THE TEXT HEIGHT IS ABOUT 1.5 mm
  - THE FOLLOWING CONDITION SHALL BE MET:
    - FLASH: 0.03 mm THICK BY 0.05 mm MAX.
    - EJECTION MARK: 0.10 mm MAX.
    - MISMATCH IN PARTING LINE: 0.05 mm MAX.
    - GATE PROTRUSION OR DEPRESSION: 0.05 mm MAX.

|           |              |         |      |                                      |       |            |                                       |                |         |           |
|-----------|--------------|---------|------|--------------------------------------|-------|------------|---------------------------------------|----------------|---------|-----------|
| VER       | MODIFICATION |         | DATE | TOLERANCE UNLESS OTHERWISE SPECIFIED | DRAWN | CK tan     | CONNECTIONS XFCN CONNECTORS CO., LTD. | XFCN 兴飞连接器有限公司 | SHEET   | 1/1       |
|           | A0           |         |      |                                      |       |            |                                       |                |         |           |
| PART. NO. | PRODUCT NAME |         | CHKD | APPD                                 | VIEW  | PROJ       | P2016-XX-N0                           | P2016-XX-N0    | DNG NO. | 009       |
|           | ±0.30        | ±2°     | ±1°  |                                      |       |            |                                       |                |         |           |
| X. ±0.30  |              | .X. ±2° |      | .XX ±1°                              |       | .XXX ±0.03 |                                       | SCALE          |         | 1:1       |
| X. ±0.20  |              | .X. ±2° |      | .XX ±1°                              |       | .XXX ±0.03 |                                       | UNITS          |         | mm        |
| X. ±0.30  |              | .X. ±2° |      | .XX ±1°                              |       | .XXX ±0.03 |                                       | DATE           |         | 2010.4.12 |
| X. ±0.30  |              | .X. ±2° |      | .XX ±1°                              |       | .XXX ±0.03 |                                       | SHEET          |         | 1/1       |

## X-ON Electronics

Largest Supplier of Electrical and Electronic Components

*Click to view similar products for [Headers & Wire Housings](#) category:*

*Click to view products by [XFCN](#) manufacturer:*

Other Similar products are found below :

[95000-104TRLF](#) [10135584-644402LF](#) [DF62W-EP2022PCA](#) [95000-106TRLF](#) [DF62W-2022SCA](#) [DF62W-EP2022PC](#) [2203348](#) [DF62W-2022SC](#) [1084018](#) [1029039](#) [1084017](#) [802-10-012-10-002000](#) [1112640](#) [1112639](#) [891-007-9SS-BST1T](#) [000-34000](#) [0008550134](#) [0009482033](#) [0009507031](#) [57102-F02-18ULF](#) [57102-S06-03LF](#) [57202-S52-04LF](#) [PCN6-15S-2.5E](#) [0039019024](#) [58102-G61-06LF](#) [582553-1](#) [0009485154](#) [0009508121](#) [0022285053](#) [0050291907](#) [018731A](#) [LY20-4P-DT1-P1E-BR](#) [02.125.8002.8](#) [60101931](#) [60598-1 \(Cut Strip\)](#) [M1625-3R/100](#) [61062-3](#) [61082-181009](#) [CSU011177004](#) [636-1427](#) [638009-1](#) [641938-9](#) [641991-4](#) [644168-1](#) [644827-2](#) [647662-1](#) [65039-019ELF](#) [65692-001LF](#) [65781-018](#) [65781-047](#)