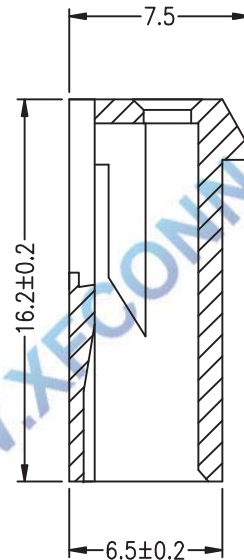
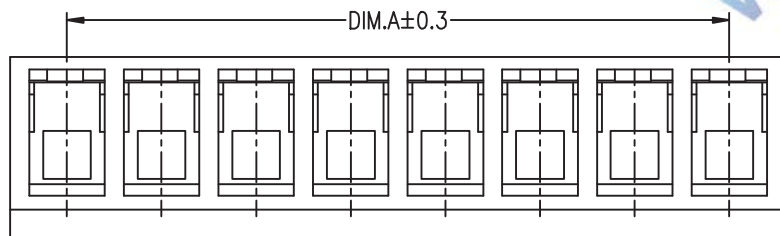
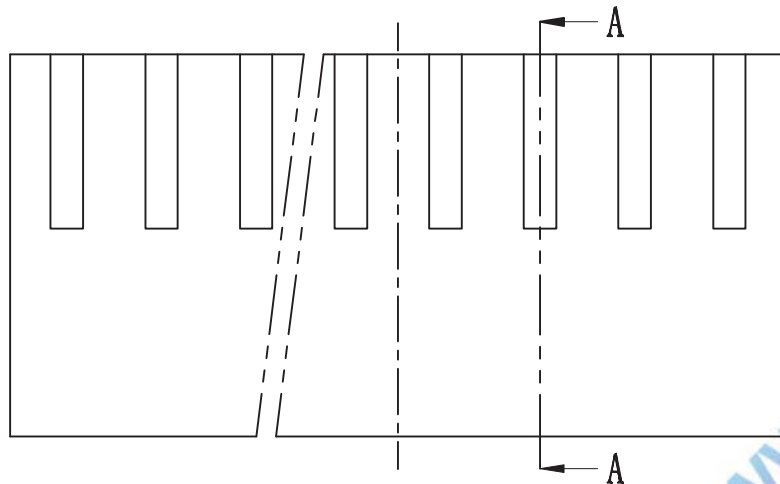
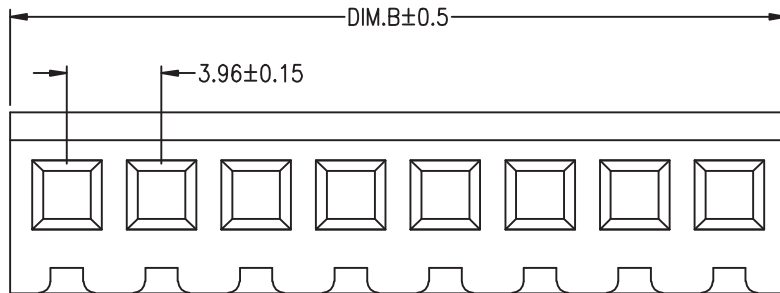


环保物料

TEL:0769-82001899



SPECIFICATIONS

- 1.Voltage rating: 250V AC, DC
- 2.Current rating: 7A, AC, DC
- 3.Withstanding Voltage: 1500V AC/minute
- 4.Insulation resistance:1000MΩ min
- 5.Temperature range: -25° C +85° C
- 6.Contact resistance: 10mΩ max

HOUSING

Housing Material:Nylon66 UL94V-0(2)
 Accepts :T3961 terminal
 Mates with: M3961 series header
 Poles : 02-16P
 Part No.: P3961-xx-N2

Pin位数

| DIM PIN | DIM A | DIM B |
|------------|-------|-------|
| 2 | 3.96 | 8.52 |
| 3 | 7.92 | 12.48 |
| 4 | 11.88 | 16.44 |
| 5 | 15.84 | 20.40 |
| 6 | 19.80 | 24.36 |
| 7 | 23.76 | 28.32 |
| 8 | 27.72 | 32.28 |
| 9 | 31.68 | 36.24 |
| 10 | 35.64 | 40.20 |
| 11 | 39.60 | 44.16 |
| 12 | 43.56 | 48.12 |
| 13 | 47.52 | 52.08 |
| 14 | 51.48 | 56.04 |
| 15 | 55.44 | 60.00 |
| 16 | 59.40 | 63.96 |

| | | | | |
|----|-----|--------------|------|------|
| AO | VER | MODIFICATION | DRAW | DATE |
|----|-----|--------------|------|------|

| | | | | | |
|----------------------------|-------|-------|-------|-------|--------|
| TOLERANCE UNLESS OTHERWISE | | | | DRAWN | CK tan |
| X. | ±0.30 | X° | ±5° | CHKD | |
| .X | ±0.20 | .X° | ±2° | APPD | |
| .XX | ±0.08 | .XX° | ±1° | VIEW | ⊕ |
| .XXX | ±0.03 | .XXX° | ±0.5° | | |

| | | | |
|--------------------------------------|-------------------------------|----------|-------------|
| XFCN 兴飞连接器有限公司 | | SHEET | 1/1 |
| CONNECTORS XFCN CONNECTORS CO., LTD. | | DATE | 2010. 4. 12 |
| PRODUCT NAME | 3.96mm Crimp Style Connectors | UNITS | mm |
| PART. NO. | P3961-xx-N2 | SCALE | 1:1 |
| | | DWG. NO. | 009 |

| | | | |
|-----|--------------|------|------|
| VER | MODIFICATION | DRAW | DATE |
|-----|--------------|------|------|

X-ON Electronics

Largest Supplier of Electrical and Electronic Components

Click to view similar products for [Headers & Wire Housings](#) category:

Click to view products by [XFCN](#) manufacturer:

Other Similar products are found below :

[95000-104TRLF](#) [10135584-644402LF](#) [DF62W-EP2022PCA](#) [95000-106TRLF](#) [DF62W-2022SCA](#) [DF62W-EP2022PC](#) [2203348](#) [DF62W-2022SC](#) [1084018](#) [1029039](#) [1084017](#) [802-10-012-10-002000](#) [1112640](#) [1112639](#) [891-007-9SS-BST1T](#) [000-34000](#) [0008550134](#) [0009482033](#) [0009507031](#) [57102-F02-18ULF](#) [57102-S06-03LF](#) [57202-S52-04LF](#) [PCN6-15S-2.5E](#) [0039019024](#) [58102-G61-06LF](#) [582553-1](#) [0009485154](#) [0009508121](#) [0022285053](#) [0050291907](#) [018731A](#) [LY20-4P-DT1-P1E-BR](#) [02.125.8002.8](#) [60101931](#) [60598-1 \(Cut Strip\)](#) [M1625-3R/100](#) [61062-3](#) [61082-181009](#) [CSU011177004](#) [636-1427](#) [638009-1](#) [641938-9](#) [641991-4](#) [644168-1](#) [644827-2](#) [647662-1](#) [65039-019ELF](#) [65692-001LF](#) [65781-018](#) [65781-047](#)