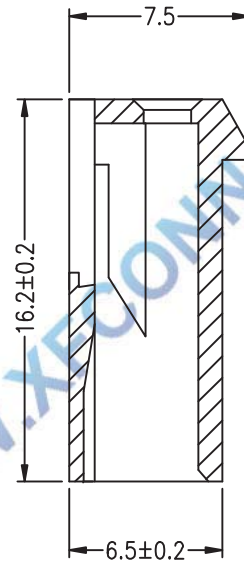
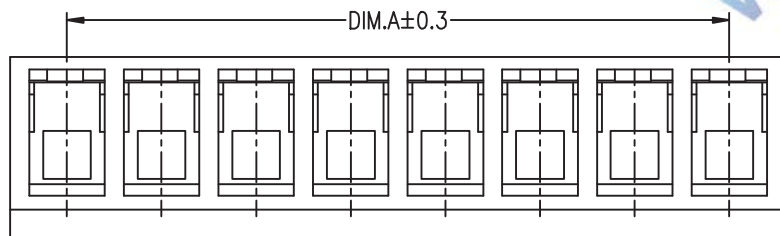
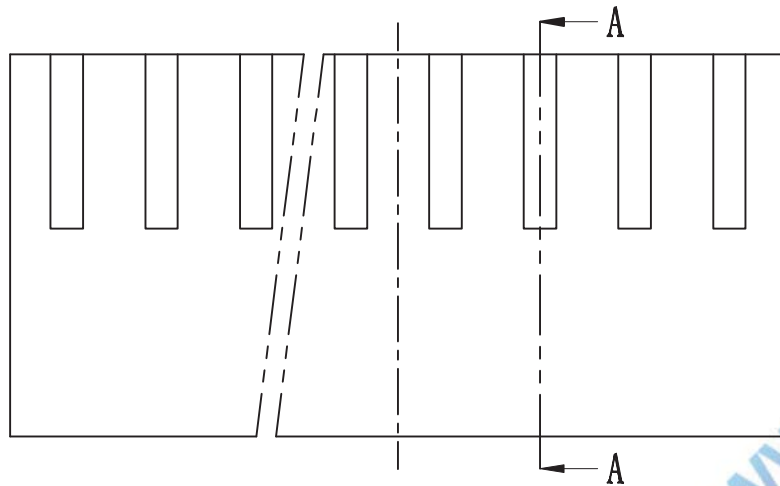
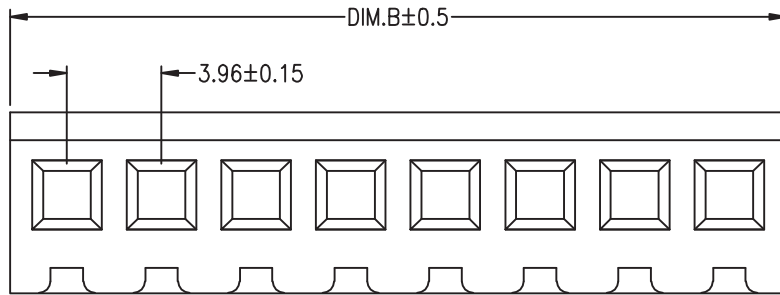


环保物料

TEL: 0769-82001899



SPECIFICATIONS

- 1.Voltage rating: 250V AC, DC
- 2.Current rating: 7A, AC, DC
- 3.Withstanding Voltage: 1500V AC/minute
- 4.Insulation resistance:1000MΩ min
- 5.Temperature range: -25° C ~ +85° C
- 6.Contact resistance: 10mΩ max

HOUSING

Housing Material:Nylon66 UL94V-0(2)
 Accepts :T3961 terminal
 Mates with: M3961 series header
 Poles : 02-16P
 Part No.: P3961-xx-N2

Pin位数

DIM PIN	DIM A	DIM B
2	3.96	8.52
3	7.92	12.48
4	11.88	16.44
5	15.84	20.40
6	19.80	24.36
7	23.76	28.32
8	27.72	32.28
9	31.68	36.24
10	35.64	40.20
11	39.60	44.16
12	43.56	48.12
13	47.52	52.08
14	51.48	56.04
15	55.44	60.00
16	59.40	63.96

WWW.XFCN.COM

TOLERANCE UNLESS OTHERWISE				DRAWN	CK tan
X.	±0.30	X°	±5°	CHKD	
.X	±0.20	.X°	±2°	APPD	
.XX	±0.08	.XX°	±1°	VIEW	⊕
.XXX	±0.03	.XXX°	±0.5°		

<p>XFCN兴飞连接器有限公司 CONNECTORS XFCN CONNECTORS CO., LTD.</p>		SHEET	1/1
		DATE	2010. 4. 12
PRODUCT NAME	3.96mm Crimp Style Connectors	UNITS	mm
PART. NO.	P3961-xx-N2	SCALE	1:1
		DWG. NO.	009

VER	MODIFICATION	DRAW	DATE
A0			

X-ON Electronics

Largest Supplier of Electrical and Electronic Components

Click to view similar products for [Headers & Wire Housings](#) category:

Click to view products by [XFCN](#) manufacturer:

Other Similar products are found below :

[95000-104TRLF](#) [10135584-644402LF](#) [DF62W-EP2022PCA](#) [95000-106TRLF](#) [DF62W-2022SCA](#) [DF62W-EP2022PC](#) [2203348](#) [DF62W-2022SC](#) [1084018](#) [1029039](#) [1084017](#) [802-10-012-10-002000](#) [1112640](#) [1112639](#) [891-007-9SS-BST1T](#) [000-34000](#) [0008550134](#) [0009482033](#) [0009507031](#) [57102-F02-18ULF](#) [57102-S06-03LF](#) [57202-S52-04LF](#) [PCN6-15S-2.5E](#) [0039019024](#) [58102-G61-06LF](#) [582553-1](#) [0009485154](#) [0009508121](#) [0022285053](#) [0050291907](#) [018731A](#) [LY20-4P-DT1-P1E-BR](#) [02.125.8002.8](#) [60101931](#) [60598-1 \(Cut Strip\)](#) [M1625-3R/100](#) [61062-3](#) [61082-181009](#) [CSU011177004](#) [636-1427](#) [638009-1](#) [641938-9](#) [641991-4](#) [644168-1](#) [644827-2](#) [647662-1](#) [65039-019ELF](#) [65692-001LF](#) [65781-018](#) [65781-047](#)