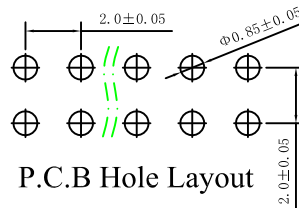
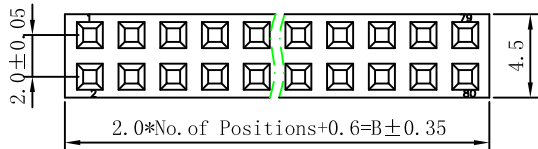


No. of Pin/Row	Dimension	
	A	B
2X02	2.0	4.6
2X03	4.0	6.6
2X04	6.0	8.6
2X05	8.0	10.6
2X06	10.0	12.6
2X07	12.0	14.6
2X08	14.0	16.6
2X09	16.0	18.6
2X10	18.0	20.6
2X11	20.0	22.6
2X12	22.0	24.6
2X13	24.0	26.6
2X14	26.0	28.6
2X15	28.0	30.6
2X16	30.0	32.6
2X17	32.0	34.6
2X18	34.0	36.6
2X19	36.0	38.6
2X20	38.0	40.6
2X21	40.0	42.6
2X22	42.0	44.6
2X23	44.0	46.6
2X24	46.0	48.6
2X25	48.0	50.6
2X26	50.0	52.6
2X27	52.0	54.6
2X28	54.0	56.6
2X29	56.0	58.6
2X30	58.0	60.6
2X31	60.0	62.6
2X32	62.0	64.6
2X33	64.0	66.6
2X34	66.0	68.6
2X35	68.0	70.6
2X36	70.0	72.6
2X37	72.0	74.6
2X38	74.0	76.6
2X39	76.0	78.6
2X40	78.0	80.6

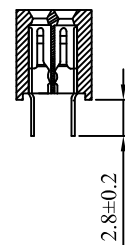
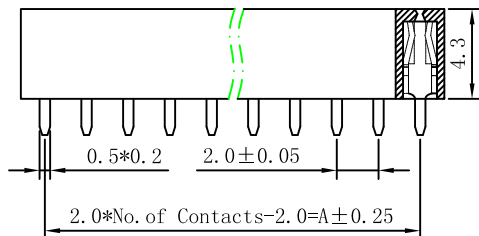


Specifications

Current Rating: 2Ampere
 Insulation Resistance: 1000MΩ MIN.
 Dielectric Withstading: 500V AC
 Contact Resistance: 20mΩ Max.
 Operating Temperature: -40°C to +105°C
 Max. Processing Temp: 240C° -260C° for 30-60seconds
 (260C° for 10 seconds)

Material

Post: Brass Tin/Plated
 Gold/Tin Over Nickel
 Bass: PA6T UL 94V-0
Part No. : PM200V-12-xx-H43



Pin位数

				TOLERANCE UNLESS OTHERWISE	DRAWN	CK tan	XFCN 兴飞连接器有限公司 XFCN CONNECTORS CO.,LTD.	SHEET	1/1	
				X. ±0.30 X° ±5°	CHKD			DATE	2020.04.12	
				.X ±0.20 .X° ±2°	APPD			UNITS	mm	
				.XX ±0.08 .XX° ±1°	VIEW	⊕		SCALE	1:1	
AO	MODIFICATION	DRAW	DATE	.XXX ±0.03 .XXX° ±0.5°			PRODUCT NAME	2.00mm Female Header Connectors	DWG. NO.	009

X-ON Electronics

Largest Supplier of Electrical and Electronic Components

Click to view similar products for [Headers & Wire Housings](#) category:

Click to view products by [XFCN](#) manufacturer:

Other Similar products are found below :

[57102-F02-18ULF](#) [58102-G61-06LF](#) [0009485154](#) [009176003701906](#) [0050291907](#) [02.125.8002.8](#) [609-3404](#) [61062-3](#) [622-0430](#) [622-3653LF](#)
[63453-116](#) [636-1030](#) [636-1427](#) [636-3427](#) [636-4007](#) [641938-9](#) [644827-2](#) [65495-038](#) [65692-001LF](#) [65781-018](#) [65781-047](#) [65817-010LF](#)
[65817-015LF](#) [66207-023LF](#) [67016-026LF](#) [67095-007LF](#) [68631-112](#) [68645-018](#) [68648-049](#) [699319-000](#) [70.362.1628.0](#) [70-4210](#) [70-4226B](#)
[70-4853B](#) [707-5020](#) [707-5028](#) [71.350.2428.0](#) [71961-016LF](#) [733-134](#) [754199-000](#) [760-3052](#) [787-8014-00](#) [FCN-367T-T012/H](#) [80.063.4001.1](#)
[800-90-001-10-001000](#) [800-90-010-10-002000](#) [801-43-002-10-013000](#) [801-43-006-10-002000](#) [803-41-018-10-001000](#) [803-43-014-20-](#)
[001000](#)