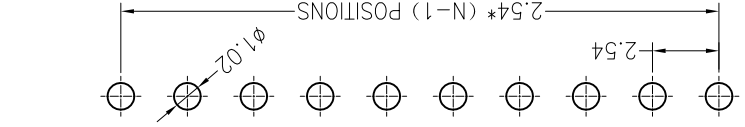


NOTES:

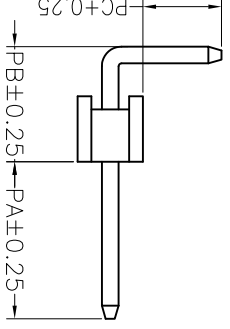
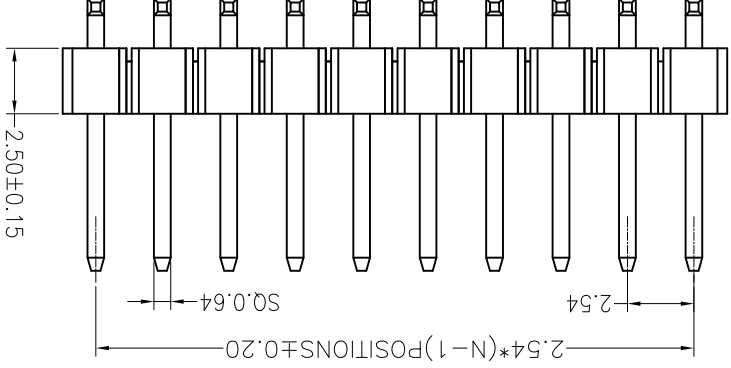
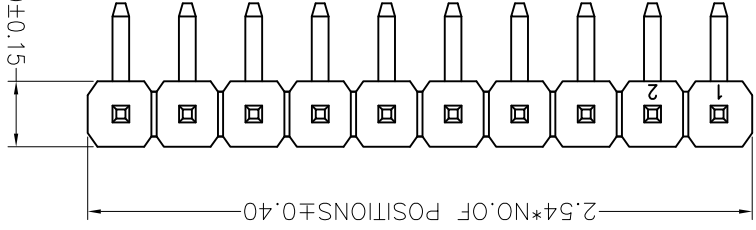
- Voltage Rating:250V AC/DC
- Current Rating:3.0A AC/DC
- Dielectric Withstand Voltage:500V AC/minute
- Contact Voltage:20M Max.
- Insulation Voltage:1000M Min
- Operation temperature:-40 ° C to +105 ° C
- Insulator Material:Polyester,UL94V-0
- Contact Material:Brass
- Contact Plating:AuorSn Plated on Nickel Overall

塑胶高度可选 (mm)		常用	
H	1.0	1.5	2.0
Item	PA	PB	PC
Standard	6.00	4.40	3.00
Alternate	---	---	---

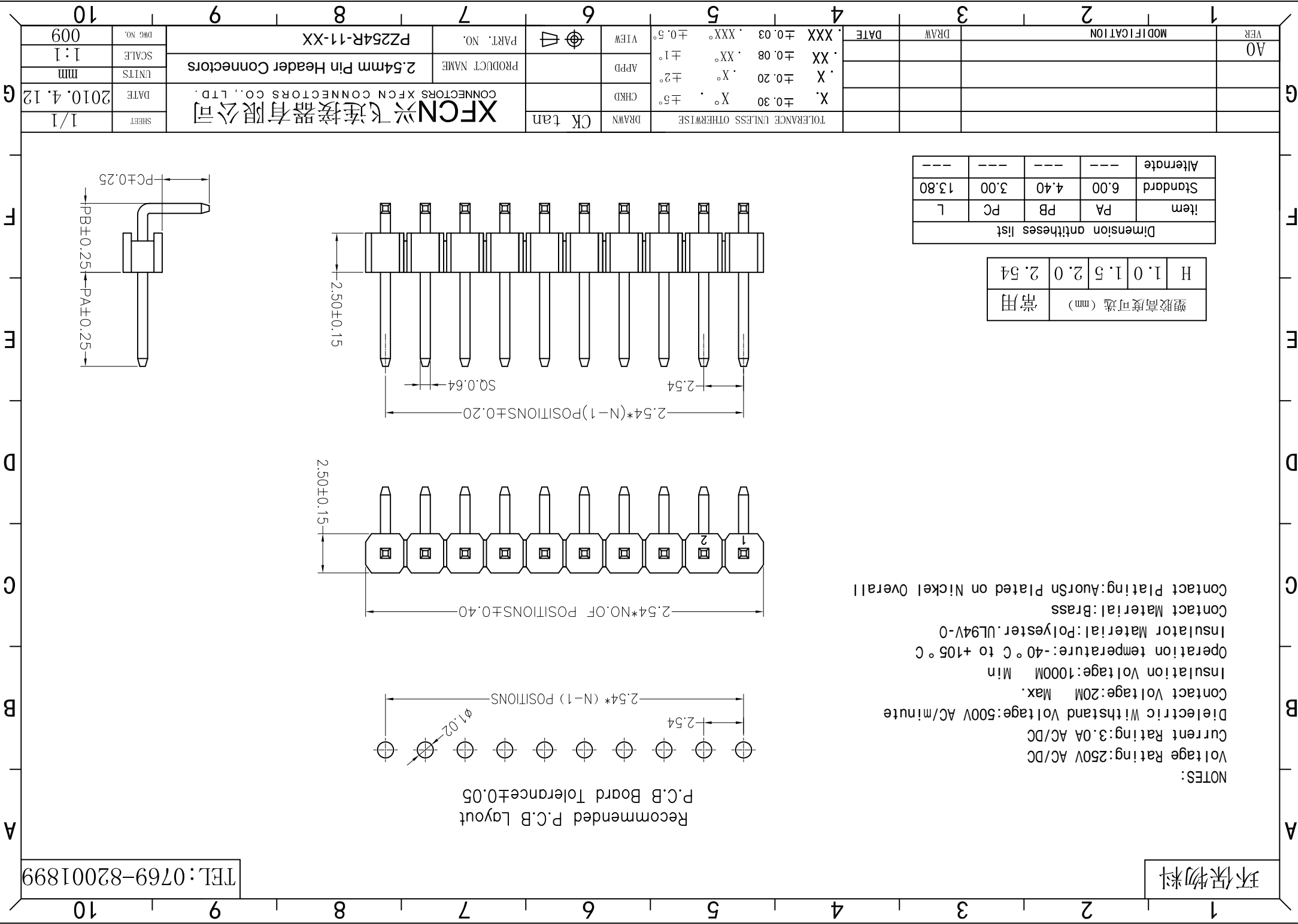
Dimension antitheses list			
Item	PA	PB	PC
Standard	6.00	4.40	3.00
Alternate	---	---	---



Recommended P.C.B Layout
P.C.B Board Tolerance±0.05



VER	MODIFICATION		DATE	TOLERANCE UNLESS OTHERWISE		DRAWN	CK tan	XFCN 兴飞连接器有限公司 CONNECTORS XFCN CONNECTORS CO., LTD.		SHEET	1/1
A0				X. ±0.30 X°. ±5°				XFCN 兴飞连接器有限公司 CONNECTORS XFCN CONNECTORS CO., LTD.		DATE	2010.4.12
				.X ±0.20 .X°. ±2°	APPD			2.54mm Pin Header Connectors		UNITS	mm
				.XX ±0.08 .XX°. ±1°	VIEW	VIEW		PART. NO.		SCALE	1:1
				.XXX ±0.03 .XXX°. ±0.5°	VIEW	VIEW		PZ254R-11-XX		DWG NO.	009
					VIEW	VIEW		PART. NO.			



X-ON Electronics

Largest Supplier of Electrical and Electronic Components

Click to view similar products for [Headers & Wire Housings](#) category:

Click to view products by [XFCN](#) manufacturer:

Other Similar products are found below :

[95000-104TRLF](#) [10135584-644402LF](#) [DF62W-EP2022PCA](#) [95000-106TRLF](#) [DF62W-2022SCA](#) [DF62W-EP2022PC](#) [2203348](#) [DF62W-2022SC](#) [1084018](#) [1029039](#) [1084017](#) [802-10-012-10-002000](#) [1112640](#) [1112639](#) [891-007-9SS-BST1T](#) [000-34000](#) [0008550134](#) [0009482033](#) [0009507031](#) [57102-F02-18ULF](#) [57102-S06-03LF](#) [57202-S52-04LF](#) [PCN6-15S-2.5E](#) [0039019024](#) [58102-G61-06LF](#) [582553-1](#) [0009485154](#) [0009508121](#) [0022285053](#) [0050291907](#) [018731A](#) [LY20-4P-DT1-P1E-BR](#) [02.125.8002.8](#) [60101931](#) [60598-1 \(Cut Strip\)](#) [M1625-3R/100](#) [61062-3](#) [61082-181009](#) [CSU011177004](#) [636-1427](#) [638009-1](#) [641938-9](#) [641991-4](#) [644168-1](#) [644827-2](#) [647662-1](#) [65039-019ELF](#) [65692-001LF](#) [65781-018](#) [65781-047](#)