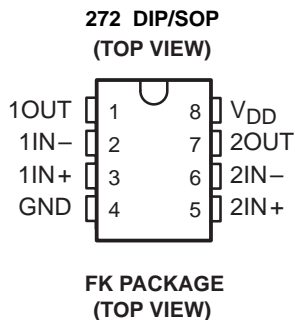


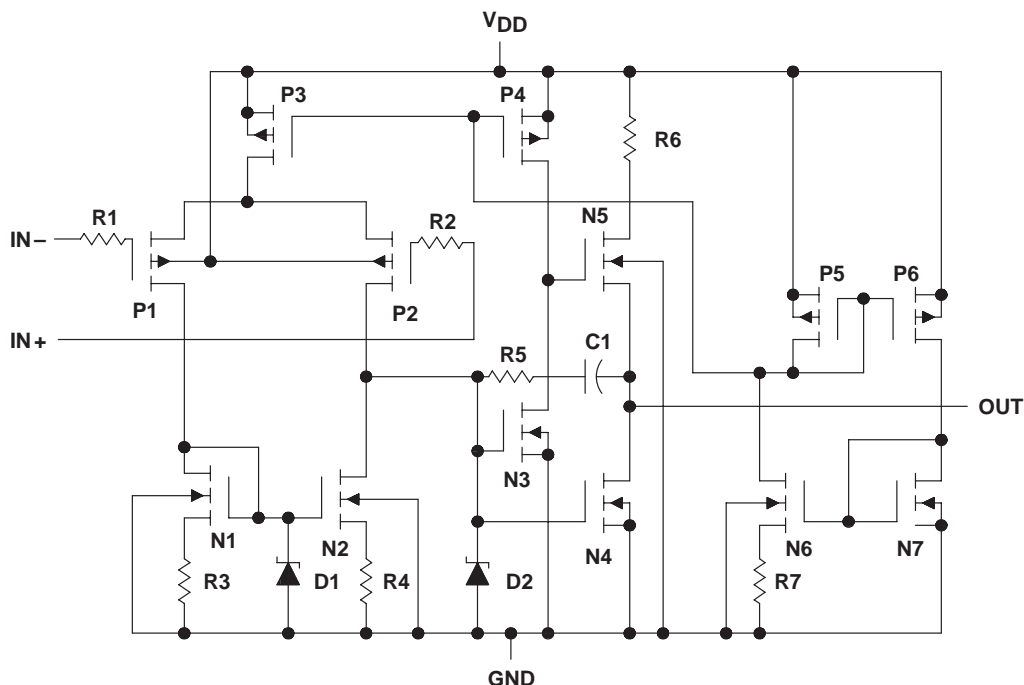
- **Input Offset Voltage Drift . . . Typically 0.1  $\mu$ V/Month, Including the First 30 Days**
- **Wide Range of Supply Voltages Over Specified Temperature Range:**
  - 0°C to 70°C . . . 3 V to 16 V
  - 40°C to 85°C . . . 4 V to 16 V
  - 55°C to 125°C . . . 4 V to 16 V
- **Single-Supply Operation**
- **Common-Mode Input Voltage Range Extends Below the Negative Rail (C-Suffix, I-Suffix types)**
- **Low Noise . . . Typically 25 nV/ $\sqrt{\text{Hz}}$  at f = 1 kHz**
- **Output Voltage Range Includes Negative Rail**
- **High Input impedance . . . 10<sup>12</sup>  $\Omega$  Typ**
- **ESD-Protection Circuitry**



### description

The 272 precision dual operational amplifiers combine a wide range of input offset voltage grades with low offset voltage drift, high input impedance, low noise, and speeds approaching that of general-purpose BiFET devices.

### equivalent schematic (each amplifier)



# XD272 DIP8 / XL272 SOP8

## absolute maximum ratings over operating free-air temperature range (unless otherwise noted)†

|   |                              |
|---|------------------------------|
| Supply voltage, $V_{DD}$ (see Note 1)   | 18 V                         |
| Differential input voltage, $V_{ID}$ (see Note 2)                                 | $\pm V_{DD}$                 |
| Input voltage range, $V_I$ (any input)  | -0.3 V to $V_{DD}$           |
| Input current, $I_I$  | $\pm 5$ mA                   |
| output current, $I_O$ (each output)   | $\pm 30$ mA                  |
| Total current into $V_{DD}$   | 45 mA                        |
| Total current out of GND  | 45 mA                        |
| Duration of short-circuit current at (or below) 25°C (see Note 3)                 | unlimited                    |
| Continuous total dissipation  | See Dissipation Rating Table |
| Operating free-air temperature, $T_A$ : C suffix                                  | 0°C to 70°C                  |
| I suffix  | -40°C to 85°C                |
| M suffix  | -55°C to 125°C               |
| Storage temperature range   | -65°C to 150°C               |
| Case temperature for 60 seconds: FK package                                       | 260°C                        |
| Lead temperature 1,6 mm (1/16 inch) from case for 10 seconds: D, P, or PW package | 260°C                        |
| Lead temperature 1,6 mm (1/16 inch) from case for 60 seconds: JG package          | 300°C                        |

† Stresses beyond those listed under “absolute maximum ratings” may cause permanent damage to the device. These are stress ratings only, and functional operation of the device at these or any other conditions beyond those indicated under “recommended operating conditions” is not implied. Exposure to absolute-maximum-rated conditions for extended periods may affect device reliability.

- NOTES: 1. All voltage values, except differential voltages, are with respect to network ground.  
 2. Differential voltages are at IN+ with respect to IN-.  
 3. The output may be shorted to either supply. Temperature and/or supply voltages must be limited to ensure that the maximum dissipation rating is not exceeded (see application section).

**DISSIPATION RATING TABLE**

| PACKAGE | $T_A \leq 25^\circ\text{C}$<br>POWER RATING | DERATING FACTOR<br>ABOVE $T_A = 25^\circ\text{C}$ | $T_A = 70^\circ\text{C}$<br>POWER RATING | $T_A = 85^\circ\text{C}$<br>POWER RATING | $T_A = 125^\circ\text{C}$<br>POWER RATING |
|---------|---|---|--|--|---|
| D       | 725 mW                                      | 5.8 mW/°C   | 464 mW                                   | 377 mW                                   | N/A                                       |
| FK      | 1375 mW                                     | 11 mW/°C  | 880 mW                                   | 715 mW                                   | 275 mW                                    |
| JG      | 1050 mW                                     | 8.4 mW/°C   | 672 mW                                   | 546 mW                                   | 210 mW                                    |
| P       | 1000 mW                                     | 8.0 mW/°C   | 640 mW                                   | 520 mW                                   | N/A                                       |
| PW      | 525 mW                                      | 4.2 mW/°C   | 336 mW                                   | N/A                                      | N/A                                       |

## recommended operating conditions

|                                       |                 | C SUFFIX |     | I SUFFIX |     | M SUFFIX |     | UNIT |
|---------------------------------------|-----------------|----------|-----|----------|-----|----------|-----|------|
|                                       |                 | MIN      | MAX | MIN      | MAX | MIN      | MAX |      |
| Supply voltage, $V_{DD}$              |                 | 3        | 16  | 4        | 16  | 4        | 16  | V    |
| Common-mode input voltage, $V_{IC}$   | $V_{DD} = 5$ V  | -0.2     | 3.5 | -0.2     | 3.5 | 0        | 3.5 | V    |
|                                       | $V_{DD} = 10$ V | -0.2     | 8.5 | -0.2     | 8.5 | 0        | 8.5 |      |
| Operating free-air temperature, $T_A$ |                 | 0        | 70  | -40      | 85  | -55      | 125 | °C   |

# XD272 DIP8 / XL272 SOP8

electrical characteristics at specified free-air temperature,  $V_{DD} = 5\text{ V}$  (unless otherwise noted)

| PARAMETER  |  | TEST CONDITIONS                                | $T_A$ †                                     | XD272 DIP8<br>XL272 SOP8 |             |            | UNIT |
|--|--|--|---|--------------------------|-------------|------------|------|
|  |  |  |   | MIN                      | TYP         | MAX        |      |
| $V_{IO}$ Input offset voltage  | 272  | $V_O = 1.4\text{ V}$ ,<br>$R_S = 50\ \Omega$ , | $V_{IC} = 0$ ,<br>$R_L = 10\text{ k}\Omega$ | 25°C                     | 1.1         | 10         | mV   |
|  |  |  |   | Full range               |             | 12         |      |
|  |  | 25°C   | 0.9   | 5                        | μV          |            |      |
|  |  |  |   |                          |             | Full range |      |
|  |  | $V_O = 1.4\text{ V}$ ,<br>$R_S = 50\ \Omega$ , | $V_{IC} = 0$ ,<br>$R_L = 10\text{ k}\Omega$ | 25°C                     | 230         | 2000       | μV   |
|  |  |  |   |                          |             |            |      |
| $\alpha_{VIO}$ Temperature coefficient of input offset voltage             |  |  | 25°C to 70°C                                | 1.8                      |             | μV/°C      |      |
| $I_{IO}$ Input offset current (see Note 4)                                 | $V_O = 2.5\text{ V}$ ,   | $V_{IC} = 2.5\text{ V}$                        | 25°C  | 0.1                      |             | pA         |      |
|  |  |  | 70°C  | 7                        | 300         |            |      |
| $I_{IB}$ Input bias current (see Note 4)                                   | $V_O = 2.5\text{ V}$ ,   | $V_{IC} = 2.5\text{ V}$                        | 25°C  | 0.6                      |             | pA         |      |
|  |  |  | 70°C  | 40                       | 600         |            |      |
| $V_{ICR}$ Common-mode input voltage range (see Note 5)                     |  |  | 25°C  | -0.2 to 4                | -0.3 to 4.2 | V          |      |
|  |  |  | Full range                                  | -0.2 to 3.5              |             | V          |      |
| $V_{OH}$ High-level output voltage   | $V_{ID} = 100\text{ mV}$ ,<br>$R_L = 10\text{ k}\Omega$            |  | 25°C  | 3.2                      | 3.8         | V          |      |
|  |  |  | 0°C   | 3                        | 3.8         |            |      |
|  |  |  | 70°C  | 3                        | 3.8         |            |      |
| $V_{OL}$ Low-level output voltage  | $V_{ID} = -100\text{ mV}$ ,<br>$I_{OL} = 0$                        |  | 25°C  |                          | 0 50        | mV         |      |
|  |  |  | 0°C   |                          | 0 50        |            |      |
|  |  |  | 70°C  |                          | 0 50        |            |      |
| $A_{VD}$ Large-signal differential voltage amplification                   | $V_O = 0.25\text{ V to }2\text{ V}$ ,<br>$R_L = 10\text{ k}\Omega$ |  | 25°C  | 5                        | 23          | V/mV       |      |
|  |  |  | 0°C   | 4                        | 27          |            |      |
|  |  |  | 70°C  | 4                        | 20          |            |      |
| CMRR Common-mode rejection ratio   | $V_{IC} = V_{ICRmin}$  |  | 25°C  | 65                       | 80          | dB         |      |
|  |  |  | 0°C   | 60                       | 84          |            |      |
|  |  |  | 70°C  | 60                       | 85          |            |      |
| $k_{SVR}$ Supply-voltage rejection ratio ( $\Delta V_{DD}/\Delta V_{IO}$ ) | $V_{DD} = 5\text{ V to }10\text{ V}$ ,<br>$V_O = 1.4\text{ V}$     |  | 25°C  | 65                       | 95          | dB         |      |
|  |  |  | 0°C   | 60                       | 94          |            |      |
|  |  |  | 70°C  | 60                       | 96          |            |      |
| $I_{DD}$ Supply current (two amplifiers)                                   | $V_O = 2.5\text{ V}$ ,<br>No load                                  |  | $V_{IC} = 5\text{ V}$ ,                     | 25°C                     | 1.4         | 3.2        | mA   |
|  |  |  |   | 0°C                      | 1.6         | 3.6        |      |
|  |  |  |   | 70°C                     | 1.2         | 2.6        |      |

† Full range is 0°C to 70°C.

NOTES: 4. The typical values of input bias current and input offset current below 5 pA were determined mathematically.

5. This range also applies to each input individually.

# XD272 DIP8 / XL272 SOP8

**electrical characteristics at specified free-air temperature,  $V_{DD} = 10\text{ V}$  (unless otherwise noted)**

| PARAMETER |  | TEST CONDITIONS   |  | $T_A$ †                                     | XD272 DIP8<br>XL272 SOP8                     |   |      | UNIT |                              |               |
|-----------|--|---|--|---|--|---|------|------|------------------------------|---------------|
|           |  |   |  |   | MIN  | TYP   | MAX  |      |                              |               |
| $V_{IO}$  | Input offset voltage   | 272   | $V_O = 1.4\text{ V}$ ,<br>$R_S = 50\ \Omega$ | $V_{IC} = 0$ ,<br>$R_L = 10\text{ k}\Omega$ | 25°C   | 1.1   | 10   | mV   |                              |               |
|           |  |   |  |   | Full range                                   |   | 12   |      |                              |               |
|           |  |   | 25°C   | 0.9   | 5  |   |      |      |                              |               |
|           |  |   |  |   | $V_O = 1.4\text{ V}$ ,<br>$R_S = 50\ \Omega$ | $V_{IC} = 0$ ,<br>$R_L = 10\text{ k}\Omega$ | 25°C | 290  | 2000                         | $\mu\text{V}$ |
|           |  |   |  | Full range                                  |  |   |      | 3000 |                              |               |
|           |  | $\alpha_{V_{IO}}$ Temperature coefficient of input offset voltage |  |   |  | 25°C to 70°C                                | 2    |      | $\mu\text{V}/^\circ\text{C}$ |               |
| $I_{IO}$  | Input offset current (see Note 4)                                | $V_O = 5\text{ V}$ ,<br>$V_{IC} = 5\text{ V}$                     |  | 25°C  | 0.1  |   | pA   |      |                              |               |
|           |  |   |  | 70°C  | 7  | 300   |      |      |                              |               |
| $I_{IB}$  | Input bias current (see Note 4)                                  | $V_O = 5\text{ V}$ ,<br>$V_{IC} = 5\text{ V}$                     |  | 25°C  | 0.7  |   | pA   |      |                              |               |
|           |  |   |  | 70°C  | 50   | 600   |      |      |                              |               |
| $V_{ICR}$ | Common-mode input voltage range (see Note 5)                     |   |  | 25°C  | -0.2 to 9                                    | -0.3 to 9.2                                 | V    |      |                              |               |
|           |  |   |  | Full range                                  | -0.2 to 8.5                                  |   | V    |      |                              |               |
| $V_{OH}$  | High-level output voltage  | $V_{ID} = 100\text{ mV}$ ,<br>$R_L = 10\text{ k}\Omega$           |  | 25°C  | 8  | 8.5   | V    |      |                              |               |
|           |  |   |  | 0°C   | 7.8  | 8.5   |      |      |                              |               |
|           |  |   |  | 70°C  | 7.8  | 8.4   |      |      |                              |               |
| $V_{OL}$  | Low-level output voltage   | $V_{ID} = -100\text{ mV}$ ,<br>$I_{OL} = 0$                       |  | 25°C  | 0  | 50  | mV   |      |                              |               |
|           |  |   |  | 0°C   | 0  | 50  |      |      |                              |               |
|           |  |   |  | 70°C  | 0  | 50  |      |      |                              |               |
| $A_{VD}$  | Large-signal differential voltage amplification                  | $V_O = 1\text{ V to }6\text{ V}$ ,<br>$R_L = 10\text{ k}\Omega$   |  | 25°C  | 10   | 36  | V/mV |      |                              |               |
|           |  |   |  | 0°C   | 7.5  | 42  |      |      |                              |               |
|           |  |   |  | 70°C  | 7.5  | 32  |      |      |                              |               |
| CMRR      | Common-mode rejection ratio                                      | $V_{IC} = V_{ICRmin}$   |  | 25°C  | 65   | 85  | dB   |      |                              |               |
|           |  |   |  | 0°C   | 60   | 88  |      |      |                              |               |
|           |  |   |  | 70°C  | 60   | 88  |      |      |                              |               |
| $k_{SVR}$ | Supply-voltage rejection ratio ( $\Delta V_{DD}/\Delta V_{IO}$ ) | $V_{DD} = 5\text{ V to }10\text{ V}$ ,<br>$V_O = 1.4\text{ V}$    |  | 25°C  | 65   | 95  | dB   |      |                              |               |
|           |  |   |  | 0°C   | 60   | 94  |      |      |                              |               |
|           |  |   |  | 70°C  | 60   | 96  |      |      |                              |               |
| $I_{DD}$  | Supply current (two amplifiers)                                  | $V_O = 2.5\text{ V}$ ,<br>No load                                 |  | $V_{IC} = 5\text{ V}$                       | 25°C   | 1.9   | 4    | mA   |                              |               |
|           |  |   |  |   | 0°C  | 2.3   | 4.4  |      |                              |               |
|           |  |   |  |   | 70°C   | 1.6   | 3.4  |      |                              |               |

† Full range is 0°C to 70°C.

NOTES: 4. The typical values of input bias current and input offset current below 5 pA were determined mathematically.

5. This range also applies to each input individually.

# XD272 DIP8 / XL272 SOP8

**electrical characteristics at specified free-air temperature,  $V_{DD} = 5\text{ V}$  (unless otherwise noted)**

| PARAMETER |  | TEST CONDITIONS                                 | $T_A$ †  | XD272 DIP8<br>XL272 SOP8                    |             |             | UNIT                         |    |
|-----------|--|---|--|---|-------------|-------------|------------------------------|----|
|           |  |   |  | MIN   | TYP         | MAX         |                              |    |
| $V_{IO}$  | Input offset voltage   | $V_O = 1.4\text{ V}$ ,<br>$R_S = 50\ \Omega$ ,  | $V_{IC} = 0$ ,<br>$R_L = 10\text{ k}\Omega$    | 25°C  | 1.1         | 10          | mV                           |    |
|           |  |   |  | Full range                                  |             | 13          |                              |    |
|           |  | 272   | $V_O = 1.4\text{ V}$ ,<br>$R_S = 50\ \Omega$ , | $V_{IC} = 0$ ,<br>$R_L = 10\text{ k}\Omega$ | 25°C        | 0.9         |                              | 5  |
|           |  |   |  |   | Full range  |             |                              | 7  |
|           |  | $V_O = 1.4\text{ V}$ ,<br>$R_S = 50\ \Omega$ ,  | $V_{IC} = 0$ ,<br>$R_L = 10\text{ k}\Omega$    | 25°C  | 230         | 2000        | $\mu\text{V}$                |    |
|           |  |   |  | Full range                                  |             | 3500        |                              |    |
|           | $\alpha_{VIO}$   | Temperature coefficient of input offset voltage |  | 25°C to 85°C                                | 1.8         |             | $\mu\text{V}/^\circ\text{C}$ |    |
|           | $I_{IO}$   | Input offset current (see Note 4)               | $V_O = 2.5\text{ V}$ ,                         | $V_{IC} = 2.5\text{ V}$                     | 25°C        | 0.1         |                              | pA |
| 85°C      |  |   |  |   | 24          | 15          |                              |    |
| $I_{IB}$  | Input bias current (see Note 4)                                  | $V_O = 2.5\text{ V}$ ,                          | $V_{IC} = 2.5\text{ V}$                        | 25°C  | 0.6         |             | pA                           |    |
|           |  |   |  | 85°C  | 200         | 35          |                              |    |
| $V_{ICR}$ | Common-mode input voltage range (see Note 5)                     |   |  | 25°C  | -0.2 to 4   | -0.3 to 4.2 | V                            |    |
|           |  |   |  | Full range                                  | -0.2 to 3.5 |             | V                            |    |
| $V_{OH}$  | High-level output voltage  | $V_{ID} = 100\text{ mV}$ ,                      | $R_L = 10\text{ k}\Omega$                      | 25°C  | 3.2         | 3.8         | V                            |    |
|           |  |   |  | -40°C                                       | 3           | 3.8         |                              |    |
|           |  |   |  | 85°C  | 3           | 3.8         |                              |    |
| $V_{OL}$  | Low-level output voltage   | $V_{ID} = -100\text{ mV}$ ,                     | $I_{OL} = 0$                                   | 25°C  | 0           | 50          | mV                           |    |
|           |  |   |  | -40°C                                       | 0           | 50          |                              |    |
|           |  |   |  | 85°C  | 0           | 50          |                              |    |
| $A_{VD}$  | Large-signal differential voltage amplification                  | $V_O = 1\text{ V to }6\text{ V}$ ,              | $R_L = 10\text{ k}\Omega$                      | 25°C  | 5           | 23          | V/mV                         |    |
|           |  |   |  | -40°C                                       | 3.5         | 32          |                              |    |
|           |  |   |  | 85°C  | 3.5         | 19          |                              |    |
| CMRR      | Common-mode rejection ratio                                      | $V_{IC} = V_{ICRmin}$                           |  | 25°C  | 65          | 80          | dB                           |    |
|           |  |   |  | -40°C                                       | 60          | 81          |                              |    |
|           |  |   |  | 85°C  | 60          | 86          |                              |    |
| $k_{SVR}$ | Supply-voltage rejection ratio ( $\Delta V_{DD}/\Delta V_{IO}$ ) | $V_{DD} = 5\text{ V to }10\text{ V}$ ,          | $V_O = 1.4\text{ V}$                           | 25°C  | 65          | 95          | dB                           |    |
|           |  |   |  | -40°C                                       | 60          | 92          |                              |    |
|           |  |   |  | 85°C  | 60          | 96          |                              |    |
| $I_{DD}$  | Supply current (two amplifiers)                                  | $V_O = 5\text{ V}$ ,<br>No load                 | $V_{IC} = 5\text{ V}$ ,                        | 25°C  | 1.4         | 3.2         | mA                           |    |
|           |  |   |  | -40°C                                       | 1.9         | 4.4         |                              |    |
|           |  |   |  | 85°C  | 1.1         | 2.4         |                              |    |

† Full range is -40°C to 85°C.

NOTES: 4. The typical values of input bias current and input offset current below 5 pA were determined mathematically.

5. This range also applies to each input individually.

# XD272 DIP8 / XL272 SOP8

**electrical characteristics at specified free-air temperature,  $V_{DD} = 10\text{ V}$  (unless otherwise noted)**

| PARAMETER      |  | TEST CONDITIONS |  | $T_A$ †                                     | XD272 DIP8<br>XL272 SOP8 |             |                              | UNIT |               |
|----------------|--|-----------------|--|---|--------------------------|-------------|------------------------------|------|---------------|
|                |  |                 |  |   | MIN                      | TYP         | MAX                          |      |               |
| $V_{IO}$       | Input offset voltage   | 272             | $V_O = 1.4\text{ V}$ ,<br>$R_S = 50\ \Omega$ | $V_{IC} = 0$ ,<br>$R_L = 10\text{ k}\Omega$ | 25°C                     | 1.1         | 10                           | mV   |               |
|                |  |                 |  |   | Full range               |             | 13                           |      |               |
|                |  |                 | 25°C   | 0.9   | 5                        |             |                              |      |               |
|                |  |                 | Full range                                   |   | 7                        |             |                              |      |               |
|                |  |                 |  |   |                          | 25°C        | 290                          | 2000 | $\mu\text{V}$ |
|                |  |                 |  |   |                          | Full range  |                              | 3500 |               |
| $\alpha_{VIO}$ | Temperature coefficient of input offset voltage                  |                 |  | 25°C to 85°C                                | 2                        |             | $\mu\text{V}/^\circ\text{C}$ |      |               |
| $I_{IO}$       | Input offset current (see Note 4)                                |                 | $V_O = 5\text{ V}$                           | $V_{IC} = 5\text{ V}$                       | 25°C                     | 0.1         |                              | pA   |               |
|                |  |                 |  |   | 85°C                     | 26          | 1000                         |      |               |
| $I_{IB}$       | Input bias current (see Note 4)                                  |                 | $V_O = 5\text{ V}$                           | $V_{IC} = 5\text{ V}$                       | 25°C                     | 0.7         |                              | pA   |               |
|                |  |                 |  |   | 85°C                     | 220         | 2000                         |      |               |
| $V_{ICR}$      | Common-mode input voltage range (see Note 5)                     |                 |  |   | 25°C                     | -0.2 to 9   | -0.3 to 9.2                  | V    |               |
|                |  |                 |  |   | Full range               | -0.2 to 8.5 |                              | V    |               |
| $V_{OH}$       | High-level output voltage  |                 | $V_{ID} = 100\text{ mV}$                     | $R_L = 10\text{ k}\Omega$                   | 25°C                     | 8           | 8.5                          | V    |               |
|                |  |                 |  |   | -40°C                    | 7.8         | 8.5                          |      |               |
|                |  |                 |  |   | 85°C                     | 7.8         | 8.5                          |      |               |
| $V_{OL}$       | Low-level output voltage   |                 | $V_{ID} = -100\text{ mV}$                    | $I_{OL} = 0$                                | 25°C                     | 0           | 50                           | mV   |               |
|                |  |                 |  |   | -40°C                    | 0           | 50                           |      |               |
|                |  |                 |  |   | 85°C                     | 0           | 50                           |      |               |
| $A_{VD}$       | Large-signal differential voltage amplification                  |                 | $V_O = 1\text{ V to }6\text{ V}$             | $R_L = 10\text{ k}\Omega$                   | 25°C                     | 10          | 36                           | V/mV |               |
|                |  |                 |  |   | -40°C                    | 7           | 46                           |      |               |
|                |  |                 |  |   | 85°C                     | 7           | 31                           |      |               |
| CMRR           | Common-mode rejection ratio                                      |                 | $V_{IC} = V_{ICRmin}$                        |   | 25°C                     | 65          | 85                           | dB   |               |
|                |  |                 |  |   | -40°C                    | 60          | 87                           |      |               |
|                |  |                 |  |   | 85°C                     | 60          | 88                           |      |               |
| $k_{SVR}$      | Supply-voltage rejection ratio ( $\Delta V_{DD}/\Delta V_{IO}$ ) |                 | $V_{DD} = 5\text{ V to }10\text{ V}$         | $V_O = 1.4\text{ V}$                        | 25°C                     | 65          | 95                           | dB   |               |
|                |  |                 |  |   | -40°C                    | 60          | 92                           |      |               |
|                |  |                 |  |   | 85°C                     | 60          | 96                           |      |               |
| $I_{DD}$       | Supply current (two amplifiers)                                  |                 | $V_O = 5\text{ V}$ ,<br>No load              | $V_{IC} = 5\text{ V}$                       | 25°C                     | 1.4         | 4                            | mA   |               |
|                |  |                 |  |   | -40°C                    | 2.8         | 5                            |      |               |
|                |  |                 |  |   | 85°C                     | 1.5         | 3.2                          |      |               |

† Full range is -40°C to 85°C.

NOTES: 4. The typical values of input bias current and input offset current below 5 pA were determined mathematically.

5. This range also applies to each input individually.

# XD272 DIP8 / XL272 SOP8

**electrical characteristics at specified free-air temperature,  $V_{DD} = 5\text{ V}$  (unless otherwise noted)**

| PARAMETER      |  | TEST CONDITIONS                        |  | $T_A$ †                                     | XD272 DIP8/XL272 SOP8 |             |                              | UNIT |
|----------------|--|--|--|---|-----------------------|-------------|------------------------------|------|
|                |  |  |  |   | MIN                   | TYP         | MAX                          |      |
| $V_{IO}$       | Input offset voltage   | 272                                    | $V_O = 1.4\text{ V}$ ,<br>$R_S = 50\ \Omega$ , | $V_{IC} = 0$ ,<br>$R_L = 10\text{ k}\Omega$ | 25°C                  | 1.1         | 10                           | mV   |
|                |  |  |  |   | Full range            |             | 12                           |      |
|                |  |  |  |   |                       |             |                              |      |
| $\alpha_{VIO}$ | Temperature coefficient of input offset voltage                  |  |  | 25°C to 125°C                               | 2.1                   |             | $\mu\text{V}/^\circ\text{C}$ |      |
| $I_{IO}$       | Input offset current (see Note 4)                                | $V_O = 2.5\text{ V}$                   | $V_{IC} = 2.5\text{ V}$                        | 25°C  | 0.1                   |             | pA                           |      |
|                |  |  |  | 125°C                                       | 1.4                   | 15          | nA                           |      |
| $I_{IB}$       | Input bias current (see Note 4)                                  | $V_O = 2.5\text{ V}$                   | $V_{IC} = 2.5\text{ V}$                        | 25°C  | 0.6                   |             | pA                           |      |
|                |  |  |  | 125°C                                       | 9                     | 35          | nA                           |      |
| $V_{ICR}$      | Common-mode input voltage range (see Note 5)                     |  |  | 25°C  | 0 to 4                | -0.3 to 4.2 | V                            |      |
|                |  |  |  | Full range                                  | 0 to 3.5              |             | V                            |      |
| $V_{OH}$       | High-level output voltage  | $V_{ID} = 100\text{ mV}$ ,             | $R_L = 10\text{ k}\Omega$                      | 25°C  | 3.2                   | 3.8         | V                            |      |
|                |  |  |  | -55°C                                       | 3                     | 3.8         |                              |      |
|                |  |  |  | 125°C                                       | 3                     | 3.8         |                              |      |
| $V_{OL}$       | Low-level output voltage   | $V_{ID} = -100\text{ mV}$ ,            | $I_{OL} = 0$                                   | 25°C  | 0                     | 50          | mV                           |      |
|                |  |  |  | -55°C                                       | 0                     | 50          |                              |      |
|                |  |  |  | 125°C                                       | 0                     | 50          |                              |      |
| $A_{VD}$       | Large-signal differential voltage amplification                  | $V_O = 0.25\text{ V to }2\text{ V}$    | $R_L = 10\text{ k}\Omega$                      | 25°C  | 5                     | 23          | V/mV                         |      |
|                |  |  |  | -55°C                                       | 3.5                   | 35          |                              |      |
|                |  |  |  | 125°C                                       | 3.5                   | 16          |                              |      |
| CMRR           | Common-mode rejection ratio                                      | $V_{IC} = V_{ICRmin}$                  |  | 25°C  | 65                    | 80          | dB                           |      |
|                |  |  |  | -55°C                                       | 60                    | 81          |                              |      |
|                |  |  |  | 125°C                                       | 60                    | 84          |                              |      |
| $k_{SVR}$      | Supply-voltage rejection ratio ( $\Delta V_{DD}/\Delta V_{IO}$ ) | $V_{DD} = 5\text{ V to }10\text{ V}$ , | $V_O = 1.4\text{ V}$                           | 25°C  | 65                    | 95          | dB                           |      |
|                |  |  |  | -55°C                                       | 60                    | 90          |                              |      |
|                |  |  |  | 125°C                                       | 60                    | 97          |                              |      |
| $I_{DD}$       | Supply current (two amplifiers)                                  | $V_O = 2.5\text{ V}$ ,<br>No load      | $V_{IC} = 2.5\text{ V}$ ,                      | 25°C  | 1.4                   | 3.2         | mA                           |      |
|                |  |  |  | -55°C                                       | 2                     | 5           |                              |      |
|                |  |  |  | 125°C                                       | 1                     | 2.2         |                              |      |

† Full range is -55°C to 125°C.

- NOTES: 4. The typical values of input bias current and input offset current below 5 pA were determined mathematically.  
5. This range also applies to each input individually.

# XD272 DIP8 / XL272 SOP8

**electrical characteristics at specified free-air temperature,  $V_{DD} = 10\text{ V}$  (unless otherwise noted)**

| PARAMETER      |  | TEST CONDITIONS |  | $T_A^\dagger$                               | XD272 DIP8/XL272 SOP8 |          |                              | UNIT |
|----------------|--|-----------------|--|---|-----------------------|----------|------------------------------|------|
|                |  |                 |  |   | MIN                   | TYP      | MAX                          |      |
| $V_{IO}$       | Input offset voltage   | 272             | $V_O = 1.4\text{ V}$ ,<br>$R_S = 50\ \Omega$ | $V_{IC} = 0$ ,<br>$R_L = 10\text{ k}\Omega$ | 25°C                  | 1.1      | 10                           | mV   |
|                |  |                 |  |   | Full range            |          | 12                           |      |
|                |  |                 |  |   |                       |          |                              |      |
| $\alpha_{VIO}$ | Temperature coefficient of input offset voltage                  |                 |  | 25°C to 125°C                               | 2.2                   |          | $\mu\text{V}/^\circ\text{C}$ |      |
| $I_{IO}$       | Input offset current (see Note 4)                                |                 | $V_O = 5\text{ V}$                           | $V_{IC} = 5\text{ V}$                       | 25°C                  | 0.1      |                              | pA   |
|                |  |                 |  |   | 125°C                 | 1.8      | 15                           | nA   |
| $I_{IB}$       | Input bias current (see Note 4)                                  |                 | $V_O = 5\text{ V}$                           | $V_{IC} = 5\text{ V}$                       | 25°C                  | 0.7      |                              | pA   |
|                |  |                 |  |   | 125°C                 | 10       | 35                           | nA   |
| $V_{ICR}$      | Common-mode input voltage range (see Note 5)                     |                 |  |   | 25°C                  | 0 to 9   | -0.3 to 9.2                  | V    |
|                |  |                 |  |   | Full range            | 0 to 8.5 |                              | V    |
| $V_{OH}$       | High-level output voltage  |                 | $V_{ID} = 100\text{ mV}$                     | $R_L = 10\text{ k}\Omega$                   | 25°C                  | 8        | 8.5                          | V    |
|                |  |                 |  |   | -55°C                 | 7.8      | 8.5                          |      |
|                |  |                 |  |   | 125°C                 | 7.8      | 8.4                          |      |
| $V_{OL}$       | Low-level output voltage   |                 | $V_{ID} = -100\text{ mV}$                    | $I_{OL} = 0$                                | 25°C                  | 0        | 50                           | mV   |
|                |  |                 |  |   | -55°C                 | 0        | 50                           |      |
|                |  |                 |  |   | 125°C                 | 0        | 50                           |      |
| $A_{VD}$       | Large-signal differential voltage amplification                  |                 | $V_O = 1\text{ V to }6\text{ V}$             | $R_L = 10\text{ k}\Omega$                   | 25°C                  | 10       | 36                           | V/mV |
|                |  |                 |  |   | -55°C                 | 7        | 50                           |      |
|                |  |                 |  |   | 125°C                 | 7        | 27                           |      |
| CMRR           | Common-mode rejection ratio                                      |                 | $V_{IC} = V_{ICRmin}$                        |   | 25°C                  | 65       | 85                           | dB   |
|                |  |                 |  |   | -55°C                 | 60       | 87                           |      |
|                |  |                 |  |   | 125°C                 | 60       | 86                           |      |
| $k_{SVR}$      | Supply-voltage rejection ratio ( $\Delta V_{DD}/\Delta V_{IO}$ ) |                 | $V_{DD} = 5\text{ V to }10\text{ V}$         | $V_O = 1.4\text{ V}$                        | 25°C                  | 65       | 95                           | dB   |
|                |  |                 |  |   | -55°C                 | 60       | 90                           |      |
|                |  |                 |  |   | 125°C                 | 60       | 97                           |      |
| $I_{DD}$       | Supply current (two amplifiers)                                  |                 | $V_O = 5\text{ V}$ ,<br>No load              | $V_{IC} = 5\text{ V}$                       | 25°C                  | 1.9      | 4                            | mA   |
|                |  |                 |  |   | -55°C                 | 3        | 6                            |      |
|                |  |                 |  |   | 125°C                 | 1.3      | 2.8                          |      |

$^\dagger$  Full range is -55°C to 125°C.

NOTES: 4. The typical values of input bias current and input offset current below 5 pA were determined mathematically.

5. This range also applies to each input individually.



# XD272 DIP8 / XL272 SOP8

## electrical characteristics, $V_{DD} = 5\text{ V}$ , $T_A = 25^\circ\text{C}$ (unless otherwise noted)

| PARAMETER  | TEST CONDITIONS   | XD272 DIP8/XL272 SOP8 |                   |     | UNIT                         |
|--|---|-----------------------|-------------------|-----|------------------------------|
|  |   | MIN                   | TYP               | MAX |                              |
| $V_{IO}$ Input offset voltage  | $V_O = 1.4\text{ V}$ ,<br>$R_S = 50\ \Omega$ ,<br>$V_{IC} = 0$ ,<br>$R_L = 10\text{ k}\Omega$ |                       | 1.1               | 10  | mV                           |
| $\alpha_{V_{IO}}$ Temperature coefficient of input offset voltage          |   |                       | 1.8               |     | $\mu\text{V}/^\circ\text{C}$ |
| $I_{IO}$ Input offset current (see Note 4)                                 | $V_O = 2.5\text{ V}$ ,<br>$V_{IC} = 2.5\text{ V}$   |                       | 0.1               |     | pA                           |
| $I_{IB}$ Input bias current (see Note 4)                                   | $V_O = 2.5\text{ V}$ ,<br>$V_{IC} = 2.5\text{ V}$   |                       | 0.6               |     | pA                           |
| $V_{ICR}$ Common-mode input voltage range (see Note 5)                     |   | -0.2<br>to<br>4       | -0.3<br>to<br>4.2 |     | V                            |
| $V_{OH}$ High-level output voltage   | $V_{ID} = 100\text{ mV}$ ,<br>$R_L = 10\text{ k}\Omega$                                       | 3.2                   | 3.8               |     | V                            |
| $V_{OL}$ Low-level output voltage  | $V_{ID} = -100\text{ mV}$ ,<br>$I_{OL} = 0$   |                       | 0                 | 50  | mV                           |
| $A_{VD}$ Large-signal differential voltage amplification                   | $V_O = 0.25\text{ V to }2\text{ V}$ ,<br>$R_L = 10\text{ k}\Omega$                            | 5                     | 23                |     | V/mV                         |
| CMRR Common-mode rejection ratio   | $V_{IC} = V_{ICRmin}$   | 65                    | 80                |     | dB                           |
| $k_{SVR}$ Supply-voltage rejection ratio ( $\Delta V_{DD}/\Delta V_{IO}$ ) | $V_{DD} = 5\text{ V to }10\text{ V}$ ,<br>$V_O = 1.4\text{ V}$                                | 65                    | 95                |     | dB                           |
| $I_{DD}$ Supply current (two amplifiers)                                   | $V_O = 2.5\text{ V}$ ,<br>$V_{IC} = 2.5\text{ V}$ ,<br>No load                                |                       | 1.4               | 3.2 | mA                           |

NOTES: 4. The typical values of input bias current and input offset current below 5 pA were determined mathematically.  
5. This range also applies to each input individually.

## electrical characteristics, $V_{DD} = 10\text{ V}$ , $T_A = 25^\circ\text{C}$ (unless otherwise noted)

| PARAMETER  | TEST CONDITIONS   | XD272 DIP8/XL272 SOP8 |                   |     | UNIT                         |
|--|---|-----------------------|-------------------|-----|------------------------------|
|  |   | MIN                   | TYP               | MAX |                              |
| $V_{IO}$ Input offset voltage  | $V_O = 1.4\text{ V}$ ,<br>$R_S = 50\ \Omega$ ,<br>$V_{IC} = 0$ ,<br>$R_L = 10\text{ k}\Omega$ |                       | 1.1               | 10  | mV                           |
| $\alpha_{V_{IO}}$ Temperature coefficient of input offset voltage          |   |                       | 1.8               |     | $\mu\text{V}/^\circ\text{C}$ |
| $I_{IO}$ Input offset current (see Note 4)                                 | $V_O = 5\text{ V}$ ,<br>$V_{IC} = 5\text{ V}$   |                       | 0.1               |     | pA                           |
| $I_{IB}$ Input bias current (see Note 4)                                   | $V_O = 5\text{ V}$ ,<br>$V_{IC} = 5\text{ V}$   |                       | 0.7               |     | pA                           |
| $V_{ICR}$ Common-mode input voltage range (see Note 5)                     |   | -0.2<br>to<br>9       | -0.3<br>to<br>9.2 |     | V                            |
| $V_{OH}$ High-level output voltage   | $V_{ID} = 100\text{ mV}$ ,<br>$R_L = 10\text{ k}\Omega$                                       | 8                     | 8.5               |     | V                            |
| $V_{OL}$ Low-level output voltage  | $V_{ID} = -100\text{ mV}$ ,<br>$I_{OL} = 0$   |                       | 0                 | 50  | mV                           |
| $A_{VD}$ Large-signal differential voltage amplification                   | $V_O = 1\text{ V to }6\text{ V}$ ,<br>$R_L = 10\text{ k}\Omega$                               | 10                    | 36                |     | V/mV                         |
| CMRR Common-mode rejection ratio   | $V_{IC} = V_{ICRmin}$   | 65                    | 85                |     | dB                           |
| $k_{SVR}$ Supply-voltage rejection ratio ( $\Delta V_{DD}/\Delta V_{IO}$ ) | $V_{DD} = 5\text{ V to }10\text{ V}$ ,<br>$V_O = 1.4\text{ V}$                                | 65                    | 95                |     | dB                           |
| $I_{DD}$ Supply current (two amplifiers)                                   | $V_O = 5\text{ V}$ ,<br>$V_{IC} = 5\text{ V}$ ,<br>No load                                    |                       | 1.9               | 4   | mA                           |

NOTES: 4. The typical values of input bias current and input offset current below 5 pA were determined mathematically.  
5. This range also applies to each input individually.

# XD272 DIP8 / XL272 SOP8

operating characteristics at specified free-air temperature,  $V_{DD} = 5\text{ V}$

| PARAMETER                                      | TEST CONDITIONS   |  | XD272 DIP8<br>XL272 SOP8 |     |     | UNIT                   |
|--|---|--|--------------------------|-----|-----|------------------------|
|  |   |  | MIN                      | TYP | MAX |                        |
| SR      Slew rate at unity gain                | $R_L = 10\text{ k}\Omega$ ,<br>$C_L = 20\text{ pF}$ ,<br>See Figure 1 | $V_{I\text{PP}} = 1\text{ V}$          | 25°C                     | 3.6 |     | V/ $\mu\text{s}$       |
|  |   |  | 0°C                      | 4   |     |                        |
|  |   |  | 70°C                     | 3   |     |                        |
|  |   | $V_{I\text{PP}} = 2.5\text{ V}$        | 25°C                     | 2.9 |     |                        |
|  |   |  | 0°C                      | 3.1 |     |                        |
|  |   |  | 70°C                     | 2.5 |     |                        |
| $V_n$ Equivalent input noise voltage           | $f = 1\text{ kHz}$ ,<br>See Figure 2                                  | $R_S = 20\ \Omega$ ,                   | 25°C                     | 25  |     | nV/ $\sqrt{\text{Hz}}$ |
| B <sub>OM</sub> Maximum output-swing bandwidth | $V_O = V_{OH}$ ,<br>$R_L = 10\text{ k}\Omega$ ,                       | $C_L = 20\text{ pF}$ ,<br>See Figure 1 | 25°C                     | 320 |     | kHz                    |
|  |   |  | 0°C                      | 340 |     |                        |
|  |   |  | 70°C                     | 260 |     |                        |
| B <sub>1</sub> Unity-gain bandwidth            | $V_I = 10\text{ mV}$ ,<br>See Figure 3                                | $C_L = 20\text{ pF}$ ,                 | 25°C                     | 1.7 |     | MHz                    |
|  |   |  | 0°C                      | 2   |     |                        |
|  |   |  | 70°C                     | 1.3 |     |                        |
| $\phi_m$ Phase margin                          | $V_I = 10\text{ mV}$ ,<br>$C_L = 20\text{ pF}$ ,                      | $f = B_1$ ,<br>See Figure 3            | 25°C                     | 46° |     |                        |
|  |   |  | 0°C                      | 47° |     |                        |
|  |   |  | 70°C                     | 43° |     |                        |

operating characteristics at specified free-air temperature,  $V_{DD} = 10\text{ V}$

| PARAMETER                                      | TEST CONDITIONS   | $T_A$                                  | XD272 DIP8<br>XL272 SOP8 |     |     | UNIT                   |
|--|---|--|--------------------------|-----|-----|------------------------|
|  |   |  | MIN                      | TYP | MAX |                        |
| SR      Slew rate at unity gain                | $R_L = 10\text{ k}\Omega$ ,<br>$C_L = 20\text{ pF}$ ,<br>See Figure 1 | $V_{I\text{PP}} = 1\text{ V}$          | 25°C                     | 5.3 |     | V/ $\mu\text{s}$       |
|  |   |  | 0°C                      | 5.9 |     |                        |
|  |   |  | 70°C                     | 4.3 |     |                        |
|  |   | $V_{I\text{PP}} = 5.5\text{ V}$        | 25°C                     | 4.6 |     |                        |
|  |   |  | 0°C                      | 5.1 |     |                        |
|  |   |  | 70°C                     | 3.8 |     |                        |
| $V_n$ Equivalent input noise voltage           | $f = 1\text{ kHz}$ ,<br>See Figure 2                                  | $R_S = 20\ \Omega$ ,                   | 25°C                     | 25  |     | nV/ $\sqrt{\text{Hz}}$ |
| B <sub>OM</sub> Maximum output-swing bandwidth | $V_O = V_{OH}$ ,<br>$R_L = 10\text{ k}\Omega$ ,                       | $C_L = 20\text{ pF}$ ,<br>See Figure 1 | 25°C                     | 200 |     | kHz                    |
|  |   |  | 0°C                      | 220 |     |                        |
|  |   |  | 70°C                     | 140 |     |                        |
| B <sub>1</sub> Unity-gain bandwidth            | $V_I = 10\text{ mV}$ ,<br>See Figure 3                                | $C_L = 20\text{ pF}$ ,                 | 25°C                     | 2.2 |     | MHz                    |
|  |   |  | 0°C                      | 2.5 |     |                        |
|  |   |  | 70°C                     | 1.8 |     |                        |
| $\phi_m$ Phase margin                          | $V_I = 10\text{ mV}$ ,<br>$C_L = 20\text{ pF}$ ,                      | $f = B_1$ ,<br>See Figure 3            | 25°C                     | 49° |     |                        |
|  |   |  | 0°C                      | 50° |     |                        |
|  |   |  | 70°C                     | 46° |     |                        |

# XD272 DIP8 / XL272 SOP8

**operating characteristics at specified free-air temperature,  $V_{DD} = 5\text{ V}$**

| PARAMETER                               | TEST CONDITIONS   | $T_A$                          | XD272 DIP8<br>XL272 SOP8 |     |                        | UNIT       |
|---|---|--------------------------------|--------------------------|-----|------------------------|------------|
|   |   |                                | MIN                      | TYP | MAX                    |            |
| SR Slew rate at unity gain              | $R_L = 10\text{ k}\Omega$ ,<br>$C_L = 20\text{ pF}$ ,<br>See Figure 1                     | $V_{I_{PP}} = 1\text{ V}$      | 25°C                     | 3.6 |                        | V/ $\mu$ s |
|   |   |                                | -40°C                    | 4.5 |                        |            |
|   |   |                                | 85°C                     | 2.8 |                        |            |
|   |   | $V_{I_{PP}} = 2.5\text{ V}$    | 25°C                     | 2.9 |                        |            |
|   |   |                                | -40°C                    | 3.5 |                        |            |
|   |   |                                | 85°C                     | 2.3 |                        |            |
| $V_n$ Equivalent input noise voltage    | $f = 1\text{ kHz}$ ,<br>See Figure 2  | $R_S = 20\ \Omega$ ,<br>25°C   | 25                       |     | nV/ $\sqrt{\text{Hz}}$ |            |
| $B_{OM}$ Maximum output-swing bandwidth | $V_O = V_{OH}$ ,<br>$R_L = 10\text{ k}\Omega$ ,<br>$C_L = 20\text{ pF}$ ,<br>See Figure 1 | 25°C                           | 320                      |     | kHz                    |            |
|   |   | -40°C                          | 380                      |     |                        |            |
|   |   | 85°C                           | 250                      |     |                        |            |
| $B_1$ Unity-gain bandwidth              | $V_I = 10\text{ mV}$ ,<br>See Figure 3  | $C_L = 20\text{ pF}$ ,<br>25°C | 1.7                      |     | MHz                    |            |
|   |   |                                | -40°C                    | 2.6 |                        |            |
|   |   |                                | 85°C                     | 1.2 |                        |            |
| $\phi_m$ Phase margin                   | $V_I = 10\text{ mV}$ ,<br>$C_L = 20\text{ pF}$ ,<br>$f = B_1$ ,<br>See Figure 3           | 25°C                           | 46°                      |     |                        |            |
|   |   | -40°C                          | 49°                      |     |                        |            |
|   |   | 85°C                           | 43°                      |     |                        |            |

**operating characteristics at specified free-air temperature,  $V_{DD} = 10\text{ V}$**

| PARAMETER                               | TEST CONDITIONS   | $T_A$                          | XD272 DIP8<br>XL272 SOP8 |     |                        | UNIT       |
|---|---|--------------------------------|--------------------------|-----|------------------------|------------|
|   |   |                                | MIN                      | TYP | MAX                    |            |
| SR Slew rate at unity gain              | $R_L = 10\text{ k}\Omega$ ,<br>$C_L = 20\text{ pF}$ ,<br>See Figure 1                     | $V_{I_{PP}} = 1\text{ V}$      | 25°C                     | 5.3 |                        | V/ $\mu$ s |
|   |   |                                | -40°C                    | 6.8 |                        |            |
|   |   |                                | 85°C                     | 4   |                        |            |
|   |   | $V_{I_{PP}} = 5.5\text{ V}$    | 25°C                     | 4.6 |                        |            |
|   |   |                                | -40°C                    | 5.8 |                        |            |
|   |   |                                | 85°C                     | 3.5 |                        |            |
| $V_n$ Equivalent input noise voltage    | $f = 1\text{ kHz}$ ,<br>See Figure 2  | $R_S = 20\ \Omega$ ,<br>25°C   | 25                       |     | nV/ $\sqrt{\text{Hz}}$ |            |
| $B_{OM}$ Maximum output-swing bandwidth | $V_O = V_{OH}$ ,<br>$R_L = 10\text{ k}\Omega$ ,<br>$C_L = 20\text{ pF}$ ,<br>See Figure 1 | 25°C                           | 200                      |     | kHz                    |            |
|   |   | -40°C                          | 260                      |     |                        |            |
|   |   | 85°C                           | 130                      |     |                        |            |
| $B_1$ Unity-gain bandwidth              | $V_I = 10\text{ mV}$ ,<br>See Figure 3  | $C_L = 20\text{ pF}$ ,<br>25°C | 2.2                      |     | MHz                    |            |
|   |   |                                | -40°C                    | 3.1 |                        |            |
|   |   |                                | 85°C                     | 1.7 |                        |            |
| $\phi_m$ Phase margin                   | $V_I = 10\text{ mV}$ ,<br>$C_L = 20\text{ pF}$ ,<br>$f = B_1$ ,<br>See Figure 3           | 25°C                           | 49°                      |     |                        |            |
|   |   | -40°C                          | 52°                      |     |                        |            |
|   |   | 85°C                           | 46°                      |     |                        |            |

# XD272 DIP8 / XL272 SOP8

**operating characteristics at specified free-air temperature,  $V_{DD} = 5\text{ V}$**

| PARAMETER                               | TEST CONDITIONS   | $T_A$                                  | XD272 DIP8 XL272 SOP8 |     |     | UNIT                   |
|---|---|--|-----------------------|-----|-----|------------------------|
|   |   |  | MIN                   | TYP | MAX |                        |
| SR      Slew rate at unity gain         | $R_L = 10\text{ k}\Omega$ ,<br>$C_L = 20\text{ pF}$ ,<br>See Figure 1 | $V_{I\text{PP}} = 1\text{ V}$          | 25°C                  | 3.6 |     | V/ $\mu\text{s}$       |
|   |   |  | -55°C                 | 4.7 |     |                        |
|   |   |  | 125°C                 | 2.3 |     |                        |
|   |   | $V_{I\text{PP}} = 2.5\text{ V}$        | 25°C                  | 2.9 |     |                        |
|   |   |  | -55°C                 | 3.7 |     |                        |
|   |   |  | 125°C                 | 2   |     |                        |
| $V_n$ Equivalent input noise voltage    | $f = 1\text{ kHz}$ ,<br>See Figure 2                                  | $R_S = 20\ \Omega$                     | 25°C                  | 25  |     | nV/ $\sqrt{\text{Hz}}$ |
| BOM      Maximum output-swing bandwidth | $V_O = V_{OH}$ ,<br>$R_L = 10\text{ k}\Omega$                         | $C_L = 20\text{ pF}$ ,<br>See Figure 1 | 25°C                  | 320 |     | kHz                    |
|   |   |  | -55°C                 | 400 |     |                        |
|   |   |  | 125°C                 | 230 |     |                        |
| B <sub>1</sub> Unity-gain bandwidth     | $V_I = 10\text{ mV}$ ,<br>See Figure 3                                | $C_L = 20\text{ pF}$                   | 25°C                  | 1.7 |     | MHz                    |
|   |   |  | -55°C                 | 2.9 |     |                        |
|   |   |  | 125°C                 | 1.1 |     |                        |
| $\phi_m$ Phase margin                   | $V_I = 10\text{ mV}$ ,<br>$C_L = 20\text{ pF}$                        | $f = B_1$ ,<br>See Figure 3            | 25°C                  | 46° |     |                        |
|   |   |  | -55°C                 | 49° |     |                        |
|   |   |  | 125°C                 | 41° |     |                        |

**operating characteristics at specified free-air temperature,  $V_{DD} = 10\text{ V}$**

| PARAMETER                               | TEST CONDITIONS   | $T_A$                                  | XD272 DIP8 XL272 SOP8 |     |     | UNIT                   |
|---|---|--|-----------------------|-----|-----|------------------------|
|   |   |  | MIN                   | TYP | MAX |                        |
| SR      Slew rate at unity gain         | $R_L = 10\text{ k}\Omega$ ,<br>$C_L = 20\text{ pF}$ ,<br>See Figure 1 | $V_{I\text{PP}} = 1\text{ V}$          | 25°C                  | 5.3 |     | V/ $\mu\text{s}$       |
|   |   |  | -55°C                 | 7.1 |     |                        |
|   |   |  | 125°C                 | 3.1 |     |                        |
|   |   | $V_{I\text{PP}} = 5.5\text{ V}$        | 25°C                  | 4.6 |     |                        |
|   |   |  | -55°C                 | 6.1 |     |                        |
|   |   |  | 125°C                 | 2.7 |     |                        |
| $V_n$ Equivalent input noise voltage    | $f = 1\text{ kHz}$ ,<br>See Figure 2                                  | $R_S = 20\ \Omega$                     | 25°C                  | 25  |     | nV/ $\sqrt{\text{Hz}}$ |
| BOM      Maximum output-swing bandwidth | $V_O = V_{OH}$ ,<br>$R_L = 10\text{ k}\Omega$                         | $C_L = 20\text{ pF}$ ,<br>See Figure 1 | 25°C                  | 200 |     | kHz                    |
|   |   |  | -55°C                 | 280 |     |                        |
|   |   |  | 125°C                 | 110 |     |                        |
| B <sub>1</sub> Unity-gain bandwidth     | $V_I = 10\text{ mV}$ ,<br>See Figure 3                                | $C_L = 20\text{ pF}$                   | 25°C                  | 2.2 |     | MHz                    |
|   |   |  | -55°C                 | 3.4 |     |                        |
|   |   |  | 125°C                 | 1.6 |     |                        |
| $\phi_m$ Phase margin                   | $V_I = 10\text{ mV}$ ,<br>$C_L = 20\text{ pF}$                        | $f = B_1$ ,<br>See Figure 3            | 25°C                  | 49° |     |                        |
|   |   |  | -55°C                 | 52° |     |                        |
|   |   |  | 125°C                 | 44° |     |                        |

# XD272 DIP8 / XL272 SOP8

## operating characteristics, $V_{DD} = 5\text{ V}$ , $T_A = 25^\circ\text{C}$

| PARAMETER       |                                | TEST CONDITIONS                             |                        |                                 | 272 |     |     | UNIT                         |
|-----------------|--------------------------------|---|------------------------|---------------------------------|-----|-----|-----|------------------------------|
|                 |                                |   |                        |                                 | MIN | TYP | MAX |                              |
| SR              | Slew rate at unity gain        | $R_L = 10\text{ k}\Omega$ ,<br>See Figure 1 | $C_L = 20\text{ pF}$ , | $V_{I\text{PP}} = 1\text{ V}$   | 3.6 |     |     | $\text{V}/\mu\text{s}$       |
|                 |                                |   |                        | $V_{I\text{PP}} = 2.5\text{ V}$ | 2.9 |     |     |                              |
| $V_n$           | Equivalent input noise voltage | $f = 1\text{ kHz}$ ,                        | $R_S = 20\ \Omega$ ,   | See Figure 2                    | 25  |     |     | $\text{nV}/\sqrt{\text{Hz}}$ |
| $B_{\text{OM}}$ | Maximum output-swing bandwidth | $V_O = V_{\text{OH}}$ ,<br>See Figure 1     | $C_L = 20\text{ pF}$ , | $R_L = 10\text{ k}\Omega$ ,     | 320 |     |     | kHz                          |
| $B_1$           | Unity-gain bandwidth           | $V_I = 10\text{ mV}$ ,                      | $C_L = 20\text{ pF}$ , | See Figure 3                    | 1.7 |     |     | MHz                          |
| $\phi_m$        | Phase margin                   | $V_I = 10\text{ mV}$ ,<br>See Figure 3      | $f = B_1$ ,            | $C_L = 20\text{ pF}$ ,          | 46° |     |     |                              |

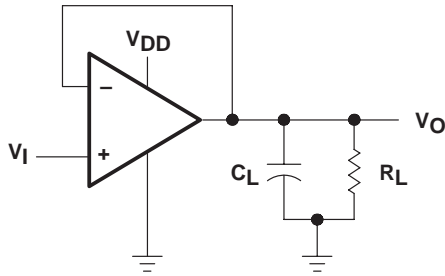
## operating characteristics, $V_{DD} = 10\text{ V}$ , $T_A = 25^\circ\text{C}$

| PARAMETER       |                                | TEST CONDITIONS                             |                        |                                 | 272 |     |     | UNIT                         |
|-----------------|--------------------------------|---|------------------------|---------------------------------|-----|-----|-----|------------------------------|
|                 |                                |   |                        |                                 | MIN | TYP | MAX |                              |
| SR              | Slew rate at unity gain        | $R_L = 10\text{ k}\Omega$ ,<br>See Figure 1 | $C_L = 20\text{ pF}$ , | $V_{I\text{PP}} = 1\text{ V}$   | 5.3 |     |     | $\text{V}/\mu\text{s}$       |
|                 |                                |   |                        | $V_{I\text{PP}} = 5.5\text{ V}$ | 4.6 |     |     |                              |
| $V_n$           | Equivalent input noise voltage | $f = 1\text{ kHz}$ ,                        | $R_S = 20\ \Omega$ ,   | See Figure 2                    | 25  |     |     | $\text{nV}/\sqrt{\text{Hz}}$ |
| $B_{\text{OM}}$ | Maximum output-swing bandwidth | $V_O = V_{\text{OH}}$ ,<br>See Figure 1     | $C_L = 20\text{ pF}$ , | $R_L = 10\text{ k}\Omega$ ,     | 200 |     |     | kHz                          |
| $B_1$           | Unity-gain bandwidth           | $V_I = 10\text{ mV}$ ,                      | $C_L = 20\text{ pF}$ , | See Figure 3                    | 2.2 |     |     | MHz                          |
| $\phi_m$        | Phase margin                   | $V_I = 10\text{ mV}$ ,<br>See Figure 3      | $f = B_1$ ,            | $C_L = 20\text{ pF}$ ,          | 49° |     |     |                              |

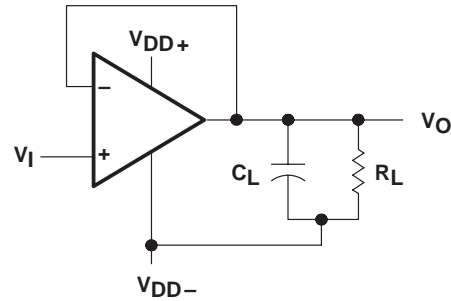
## PARAMETER MEASUREMENT INFORMATION

### single-supply versus split-supply test circuits

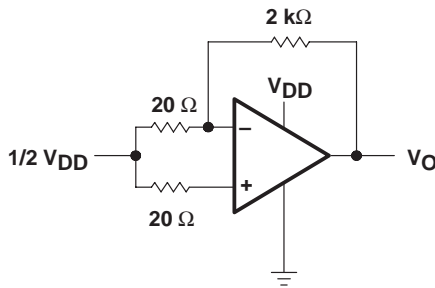
Because the 272 are optimized for single-supply operation, circuit configurations used for the various tests often present some inconvenience since the input signal, in many cases, must be offset from ground. This inconvenience can be avoided by testing the device with split supplies and the output load tied to the negative rail. A comparison of single-supply versus split-supply test circuits is shown below. The use of either circuit gives the same result.



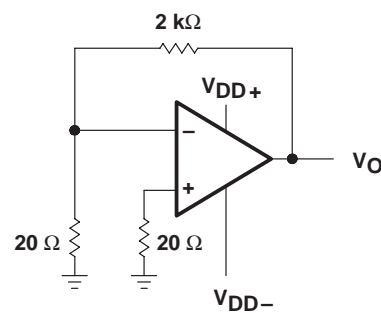
(a) SINGLE SUPPLY



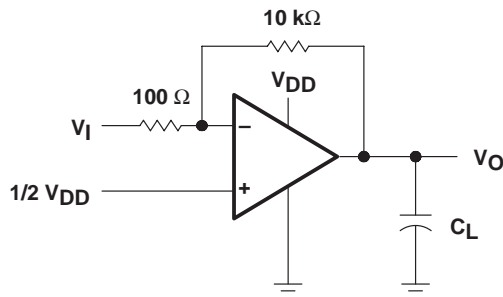
(b) SPLIT SUPPLY



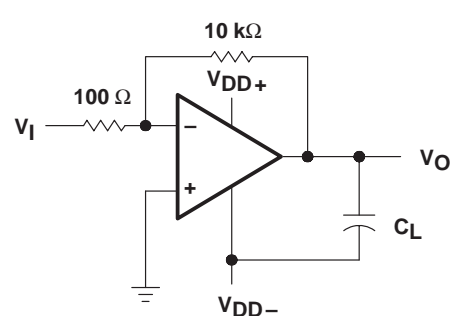
(a) SINGLE SUPPLY



(b) SPLIT SUPPLY



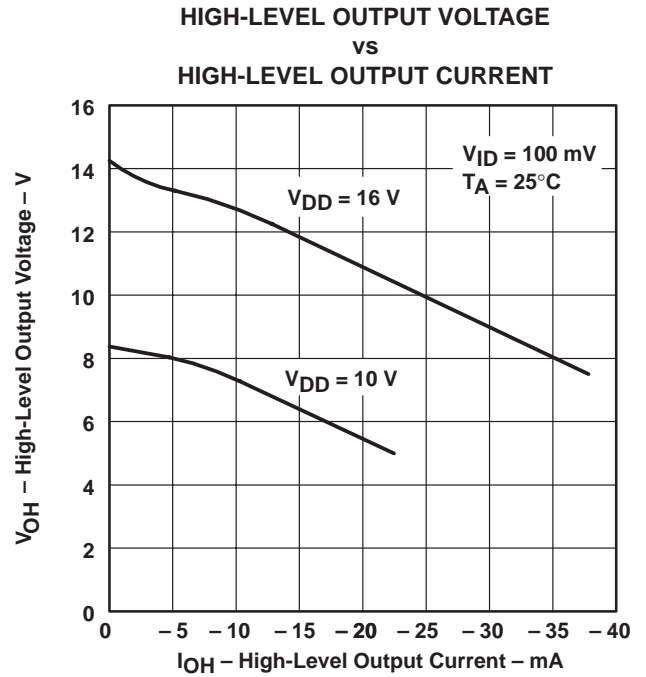
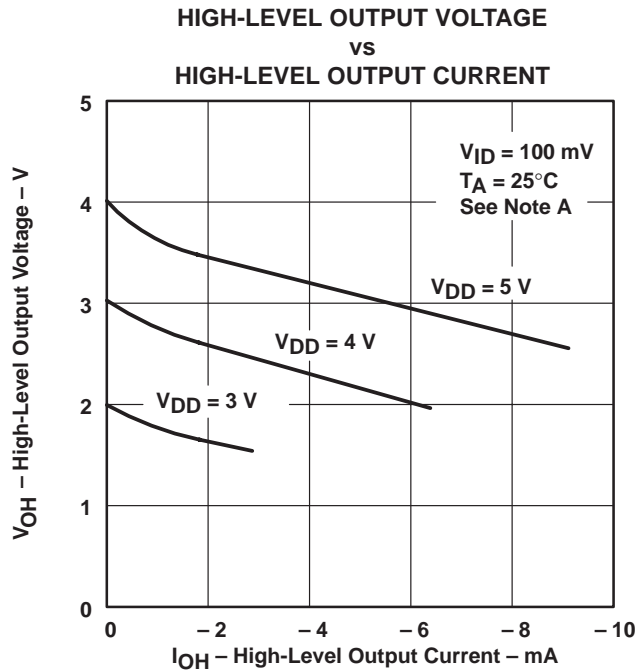
(a) SINGLE SUPPLY



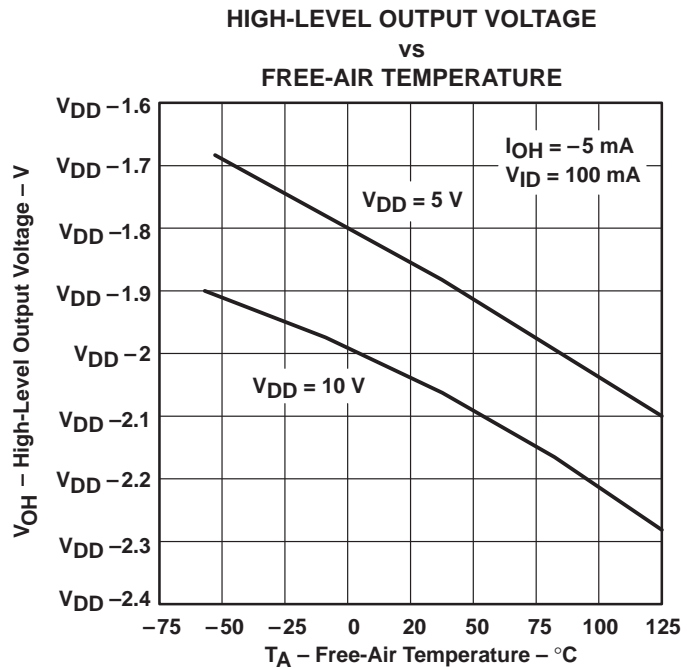
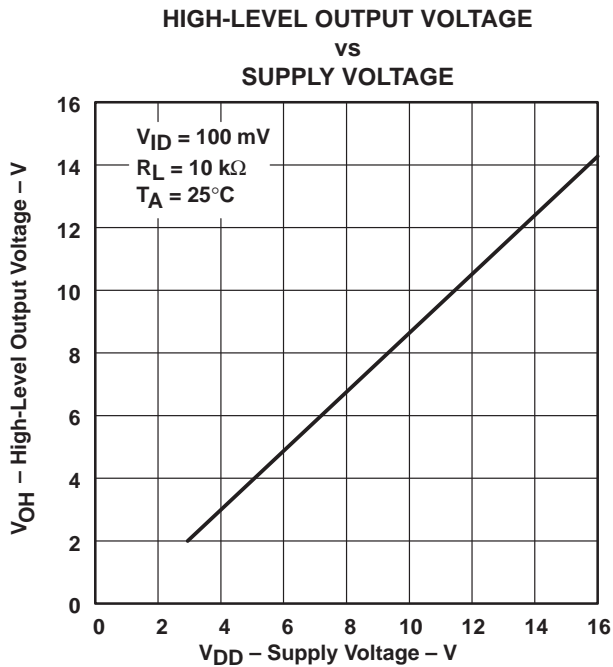
(b) SPLIT SUPPLY

# XD272 DIP8 / XL272 SOP8

## TYPICAL CHARACTERISTICS†

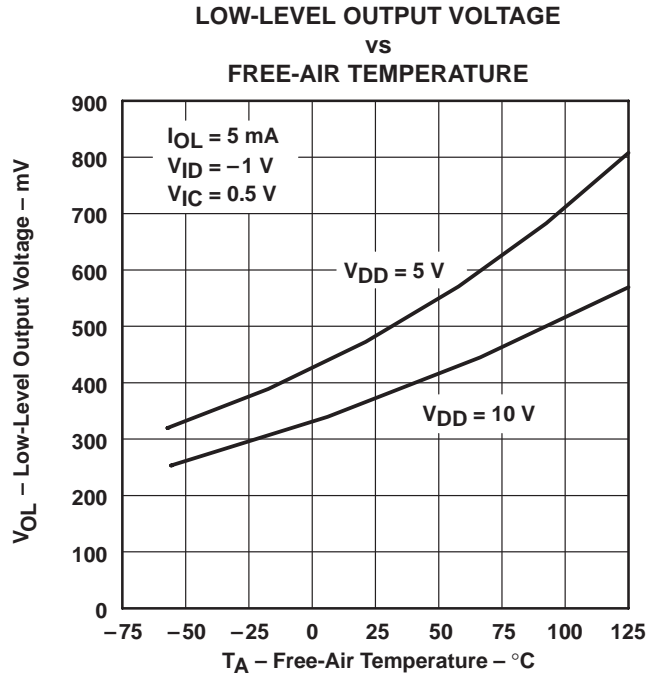
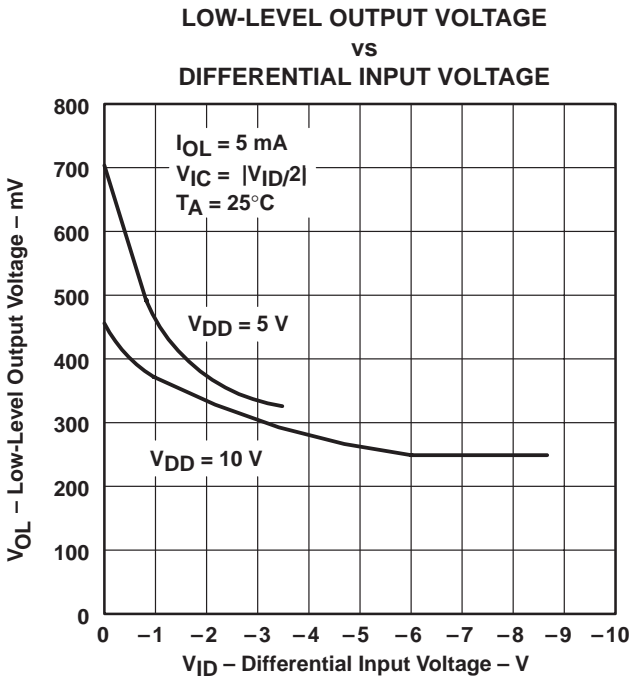
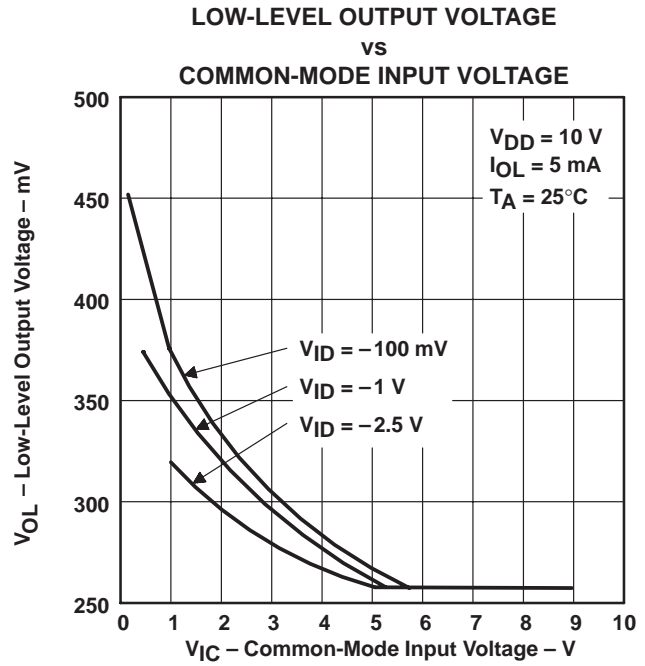
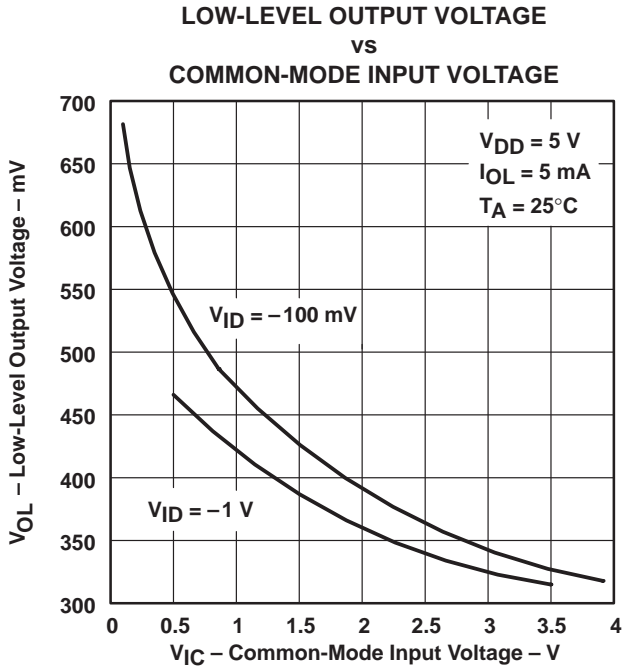


NOTE A: The 3-V curve only applies to the C version.



† Data at high and low temperatures are applicable only within the rated operating free-air temperature ranges of the various devices.

## TYPICAL CHARACTERISTICS†

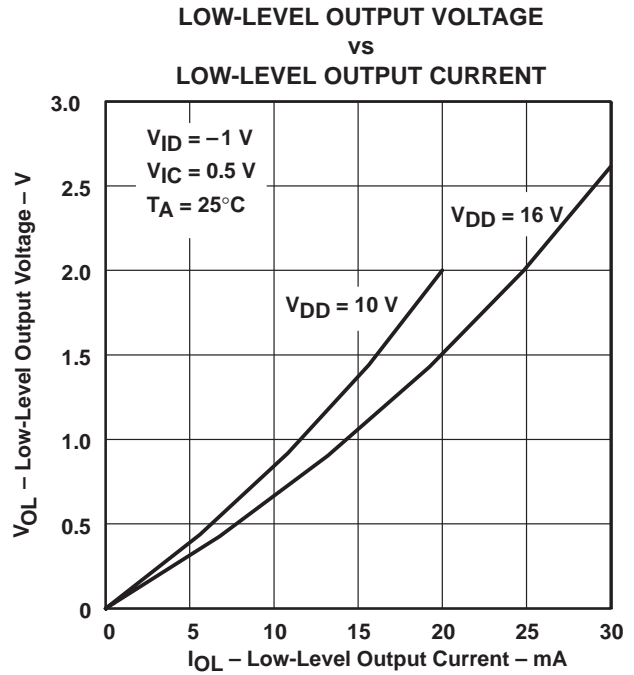
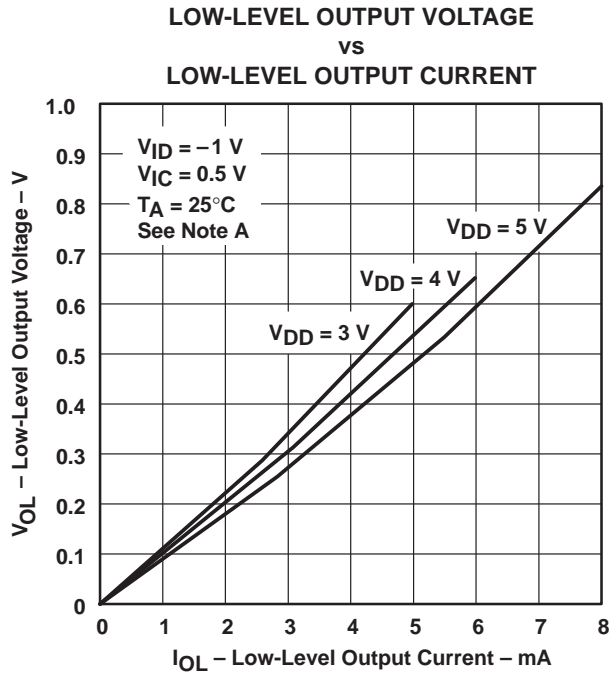


† Data at high and low temperatures are applicable only within the rated operating free-air temperature ranges of the various devices.

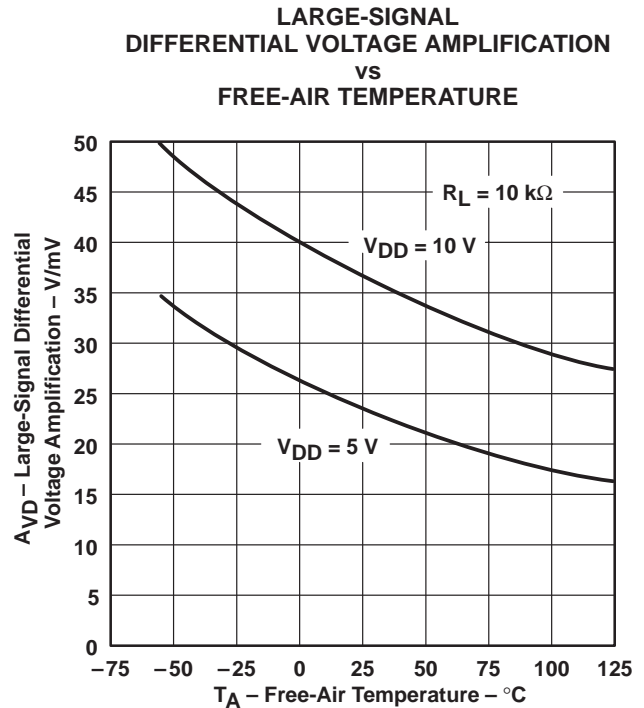
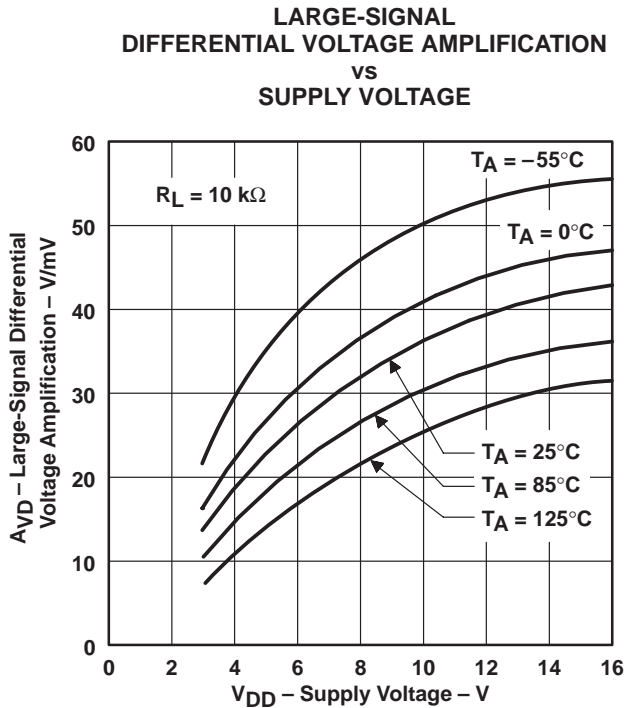


# XD272 DIP8 / XL272 SOP8

## TYPICAL CHARACTERISTICS†



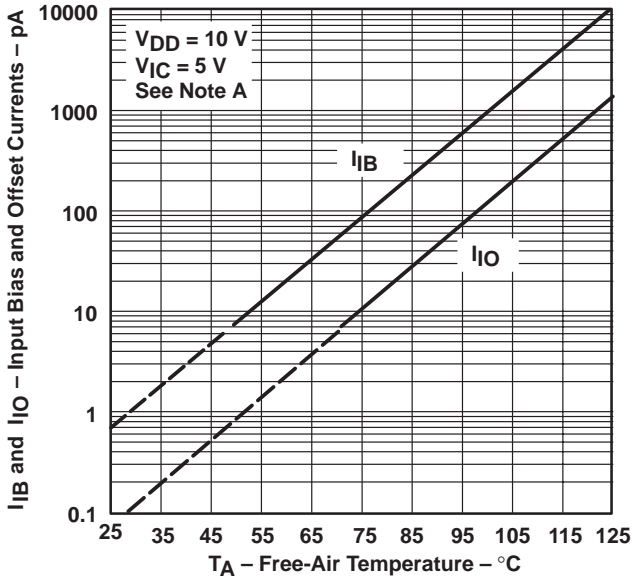
NOTE A: The 3-V curve only applies to the C version.



† Data at high and low temperatures are applicable only within the rated operating free-air temperature ranges of the various devices.

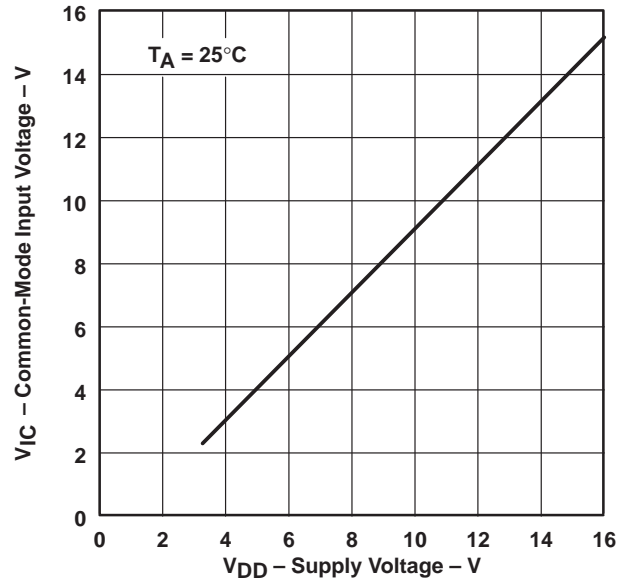
## TYPICAL CHARACTERISTICS†

**INPUT BIAS CURRENT AND INPUT OFFSET CURRENT<sup>†</sup>**  
vs  
**FREE-AIR TEMPERATURE**

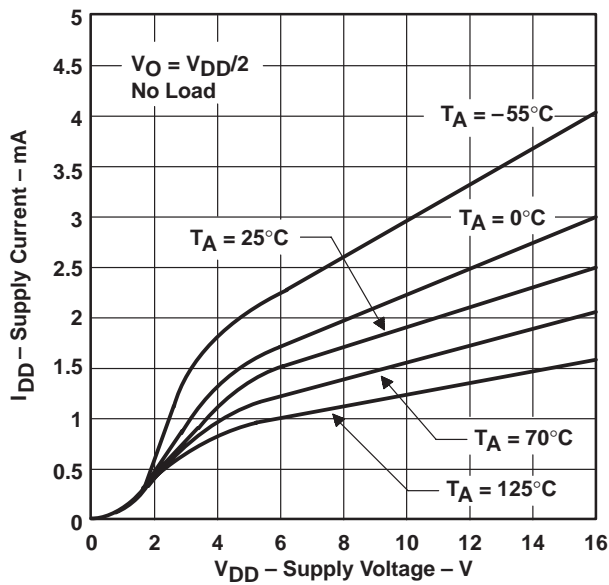


NOTE A: The typical values of input bias current and input offset current below 5 pA were determined mathematically.

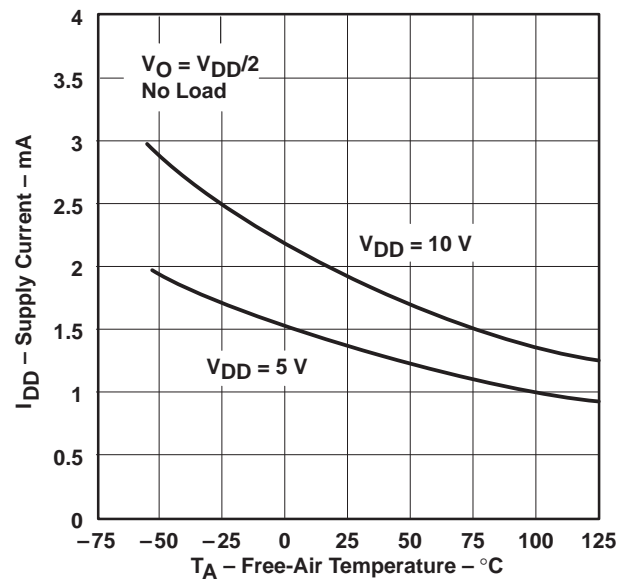
**COMMON-MODE INPUT VOLTAGE POSITIVE LIMIT**  
vs  
**SUPPLY VOLTAGE**



**SUPPLY CURRENT**  
vs  
**SUPPLY VOLTAGE**



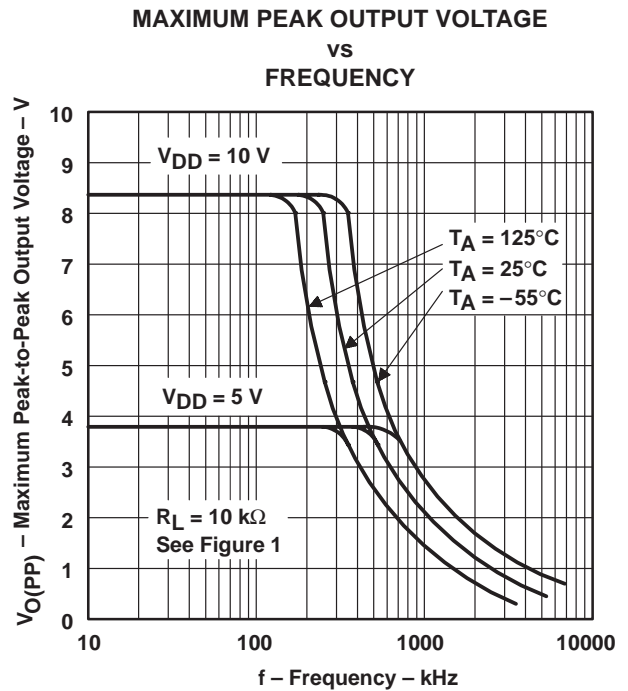
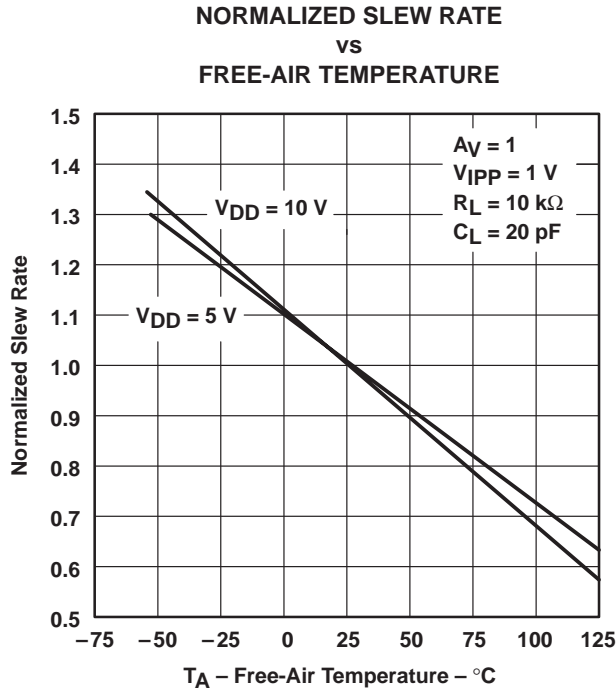
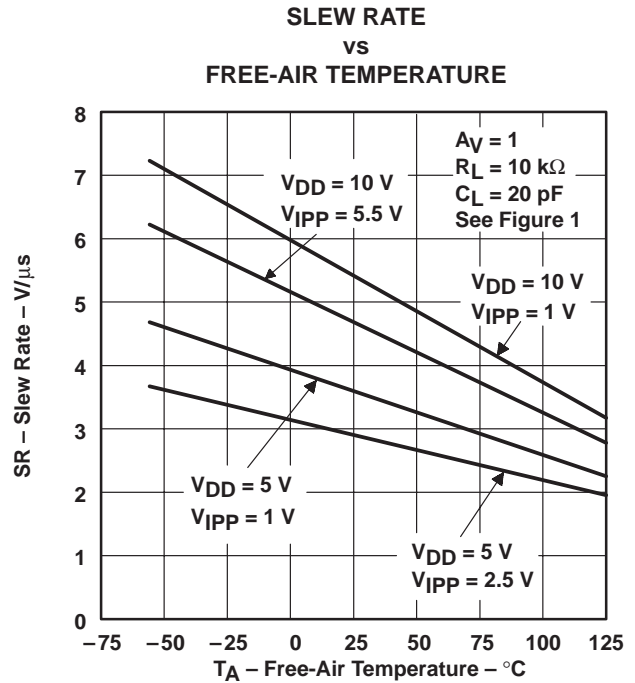
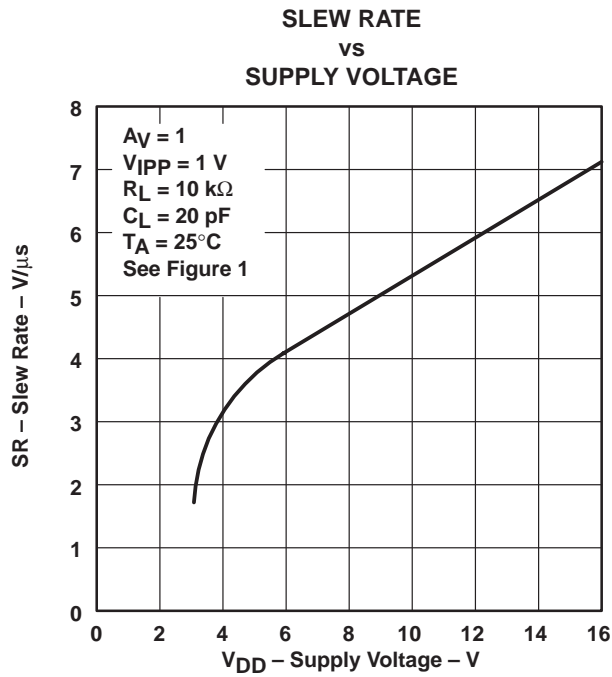
**SUPPLY CURRENT**  
vs  
**FREE-AIR TEMPERATURE**



† Data at high and low temperatures are applicable only within the rated operating free-air temperature ranges of the various devices.

# XD272 DIP8 / XL272 SOP8

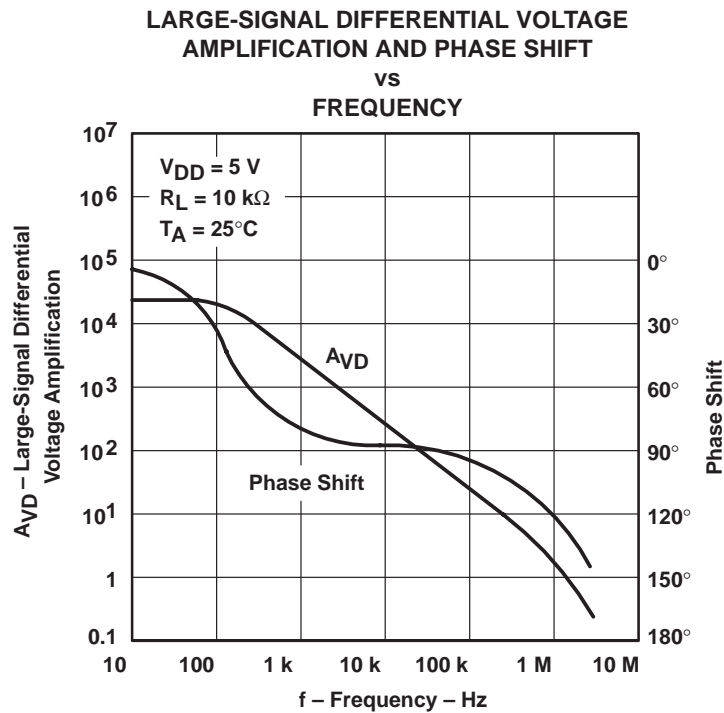
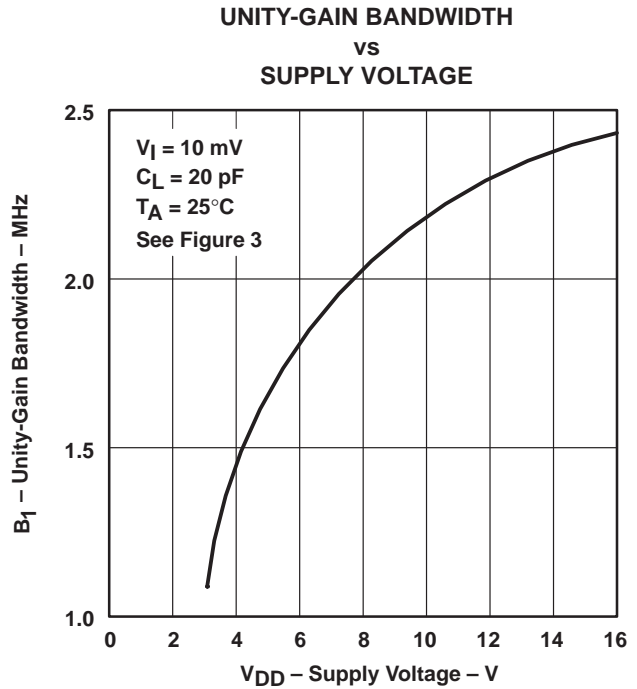
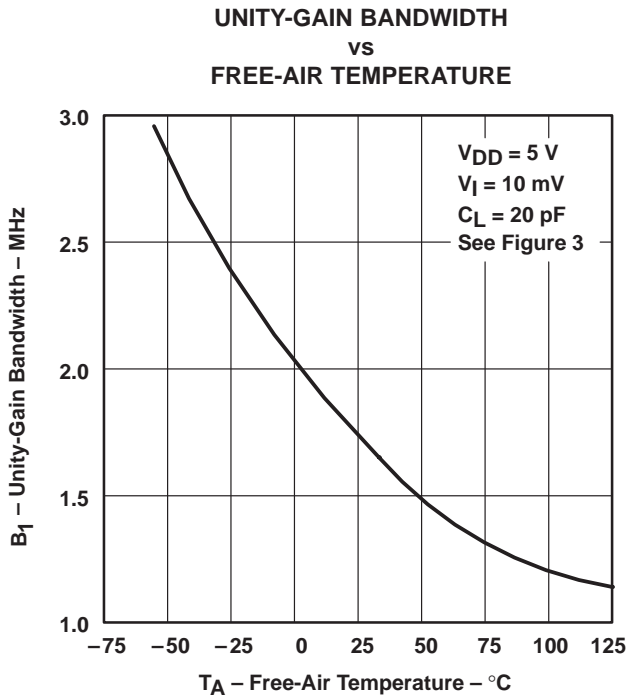
## TYPICAL CHARACTERISTICS†



† Data at high and low temperatures are applicable only within the rated operating free-air temperature ranges of the various devices.

# XD272 DIP8 / XL272 SOP8

## TYPICAL CHARACTERISTICS†

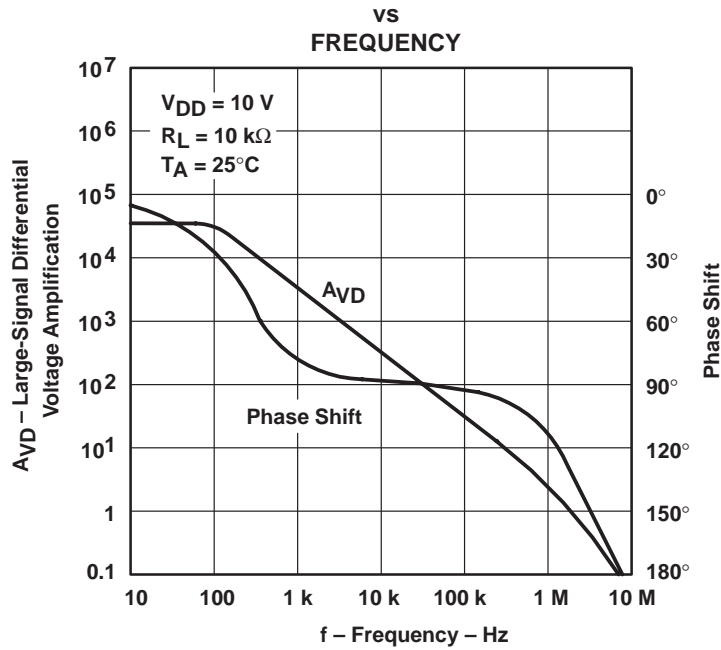


† Data at high and low temperatures are applicable only within the rated operating free-air temperature ranges of the various devices.

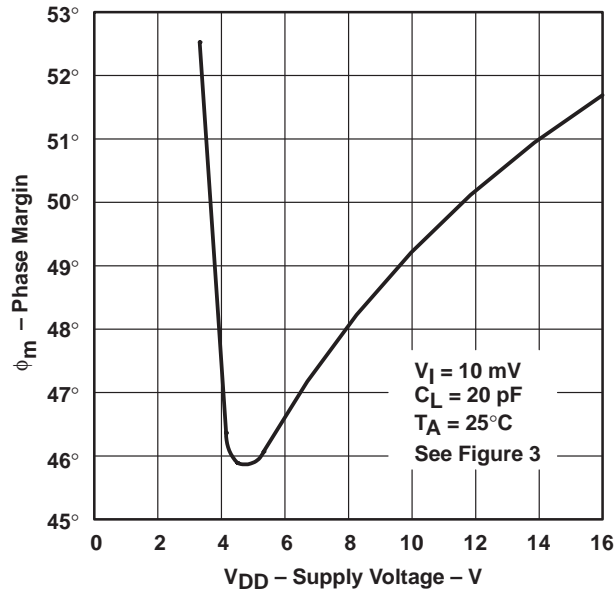
# XD272 DIP8 / XL272 SOP8

## TYPICAL CHARACTERISTICS†

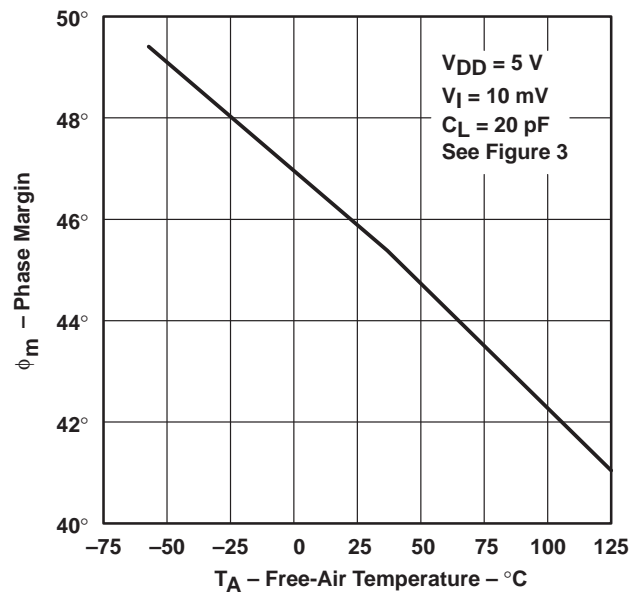
### LARGE-SIGNAL DIFFERENTIAL VOLTAGE AMPLIFICATION AND PHASE SHIFT



### PHASE MARGIN vs SUPPLY VOLTAGE



### PHASE MARGIN vs FREE-AIR TEMPERATURE



† Data at high and low temperatures are applicable only within the rated operating free-air temperature ranges of the various devices.

## X-ON Electronics

Largest Supplier of Electrical and Electronic Components

*Click to view similar products for [Precision Amplifiers](#) category:*

*Click to view products by [XINLUDA](#) manufacturer:*

Other Similar products are found below :

[OPA4187IRUMT](#) [OPA202IDGKT](#) [514327X](#) [561681F](#) [647876R](#) [5962-9080901MCA\\*](#) [MAX410CPA](#) [MAX44241AUK+T](#) [LT6230IS6#TR](#)  
[OP227GN#PBF](#) [LT6020IDD-1#PBF](#) [LT6023IDD#PBF](#) [LT6013AIDD#PBF](#) [LT6237IMS8#PBF](#) [LT1124CS8#TR](#) [LT1215CS8#TRPBF](#)  
[ADA4622-1ARZ-R7](#) [NCS21871SQ3T2G](#) [NCS21871SN2T1G](#) [NCV21871SQ3T2G](#) [NCV21871SN2T1G](#) [AD8538WAUJZ-R7](#)  
[NCS21912DMR2G](#) [MCP6V82-EMS](#) [MCP6V92-EMS](#) [TLC27L7CP](#) [TLE2022MD](#) [TLV2473CDR](#) [MCP6V34-E/ST](#) [MCP6V84-EST](#)  
[MCP6V94-EST](#) [LT1014DDWR](#) [5962-89641012A](#) [5962-8859301M2A](#) [5962-89801012A](#) [5962-9452101M2A](#) [LMC6064IN](#) [LT1013DDR](#)  
[TL034ACDR](#) [TLC2201AMDG4](#) [TLC274MDRG4](#) [TLE2021QDRG4Q1](#) [TLE2024BMDWG4](#) [AD8691WAUJZ-R7](#) [AD8629TRZ-EP-R7](#)  
[AD8604ARQZ](#) [TS507IYLT](#) [MAX4239ATT+T](#) [MAX4238AUT+T](#) [MAX4168EPD](#)