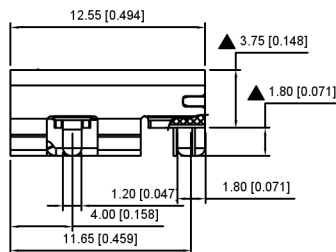
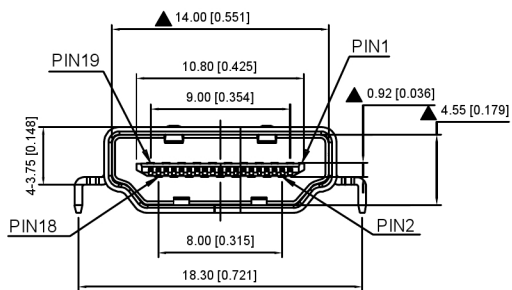


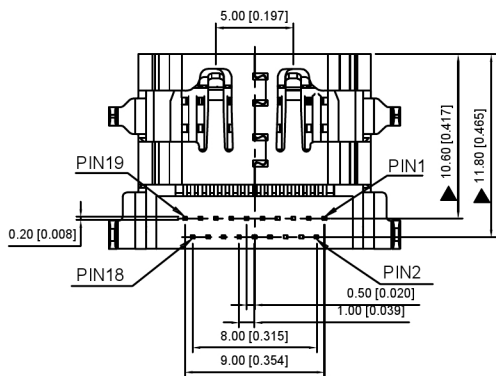
TOLERANCE: ±0.05
 RECOMMENDED PCB LAYOUT
 (TOP VIEW)
 XKB CONNECTIVITY



XKB CONNECTIVITY

A71-05H8-1X1N2

1:AU 1U"
 5:AU 15U"
 6:AU 30U"



XKB CONNECTIVITY

NOTES:

- 1.电子电路 ELECTRONIC:
 接触电阻 CONTACT RESISTANCE:20mohm MAX
 绝缘电阻 INSULATION RESISTANCE:1000 Mohm MIN
 耐电压 WITHSTAND VOLTAGE:AC 500V.1min.
- 2.机械 MECHANICAL:
 耐用性 DURABILITY:10000 CYCLE.
- 3.环境特性 ENVIRONMENT CHARACTERISTICS:
 工作温度 OPERTING TEMPERATURE :-55°C TO +105°C
- 4.RECOMMANDER PCB THICKNESS 1.2
- 5.标标"▲"符的尺寸为重点检验尺寸:
- 6.MATERIAL LIST:

XKB CONNECTIVITY

No.	PART NAME	QTY	MATERIAL	REMARK
3	SHELL	1	COPPER ALLOY T=0.50	NI PLATED
2	CONTACT	19	COPPER ALLOY T=0.20	AU/TIN PLATED
1	HOUSING	1	THERMOPLASTIC	(UL 94V-0) BLACK

广东星坤科技股份有限公司
 文件工程章

MARK	DATE	DESCRIPTION	DATE	REVISED	APPROVED	UNSPECIFIED TOLERANCES
▲						ANGLAR ±5°
▲						L ≤ 4 ±0.2
▲						4 < L ≤ 16 ±0.3
▲						16 < L ≤ 63 ±0.4
▲						L > 63 ±0.5

DSND		SCALE: N/A	MODEL TYPE: HDMI CONNECTOR
DWN		VIEW:	PART NO.:
CHKD		UNIT: mm/in	DWG NO.:
APPD		SIZE: A4	A71-05H8-1X1N2
		WEIGHT	SHEET
			REVISION
		1/1	A0



XKB INDUSTRIAL PRECISION CO., LIMITED

X-ON Electronics

Largest Supplier of Electrical and Electronic Components

Click to view similar products for [D-Sub Standard Connectors](#) category:

Click to view products by [XKB](#) manufacturer:

Other Similar products are found below :

[015-0339-000](#) [015-0341-000](#) [015-0349-000](#) [015-0350-000](#) [015-8544-011](#) [015-8755-001](#) [017041-0005](#) [020419-0104](#) [609-25P](#) [609-9P](#)
[M24308/2-23Z](#) [CT0-24-10SC](#) [CT0-36-3PC](#) [CT0E20-8PS](#) [CT0F16S-1PS](#) [CT0TA16-11SXCA232](#) [CT1E20-19SS](#) [CT2-10SL-3SC](#) [CT2-14S-2PCA34](#) [CT2-18-11PCAU](#) [CT2-22-19SC](#) [CT2-36-5PC](#) [CT6-10SL-3SC](#) [CT6-10SL-4SC](#) [CT6-14S-2SC](#) [CT6-16-12SC](#) [CT6-18-10PSA206](#)
[CT6-18-10PSA232](#) [CT6-18-11PXSA206](#) [CT6-18-11PXSA232](#) [CT6-22-10PS](#) [CT6-24-5PC](#) [CT6-9767-18-8-18-4SS](#) [CT6E14S-5SC](#)
[CT6E14SA7SC](#) [CT6E20-14SS](#) [CT6E22-14PC](#) [CT6E22-14PS](#) [CT6E22-19PS](#) [CT6E22-22PS](#) [CT6E24-10SC](#) [CT6F16S-1SC](#) [CT6FA10SL-4PS](#)
[CT6LA20-19PC](#) [CT6M20-19SS](#) [CT6NSB4-20-8SS](#) [CT6TC14S-6SCAU](#) [CT6TC14S-7PS](#) [6STD15SCT99S40X](#) [6STF09PCM05B70X](#)