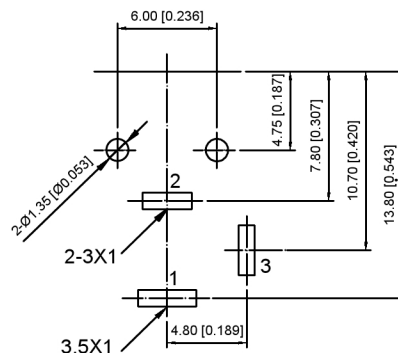
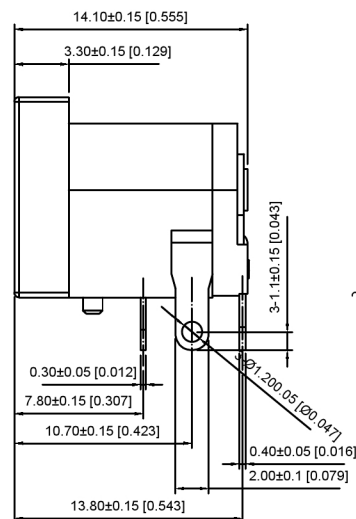
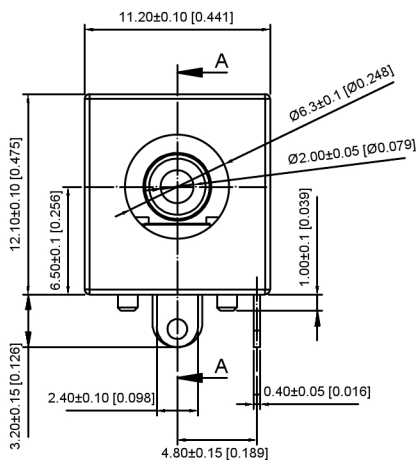
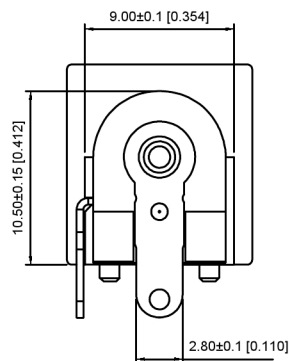
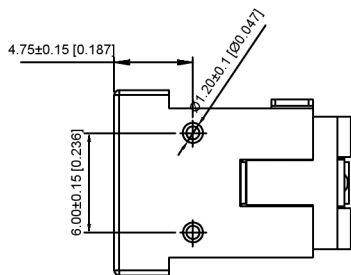


SEC:A-A



T:1.6 Dimensions of PCB board holes

Tolerance:±0.1(Printed-side view)

额定电压:20V
 Rated voltage:20V
 额定电流: 4A
 Rated Current: 4A
 接触电阻: 30MΩ MAX
 Contact resistance: 30MΩ MAX
 温度范围:5~+35℃
 Temp Range:5~+35℃
 气压:86kPa~106kPa
 Air pressure:86kPa~106kPa
 相对湿度:45%~85%
 Relative humidity:45%~85%

SCHEMATIC	
Model	DC-062A-4A
Center Pin	Ø1.0mm
	Ø1.3mm
	Ø1.65mm
	Ø2.0mm
	Ø2.35mm
Ø2.5mm	

6	TERMINAL	1	Brass t=0.4	Cu/Ni/Sn
5	SHUNT TERMINAL	1	Brass t=0.4	Cu/Ni/Sn
4	TIP SPRING	1	Phosphor copper t=0.3	Cu/Ni/Sn
3	PIN	1	Brass	Cu/Ni/Sn
2	COVER	1	PBT	UL 94V-0
1	HOUSING	1	PBT	UL 94V-0
LTR	PART NAME	QTY	MATERIAL	REMARK

DSND	SCALE: N/A	MODEL TYPE:	DC POWER JACK
DWN	VIEW:	PART NO.:	DC-062A-4A-2.0
CHKD	UNIT: mm/in	DWG NO.:	X-DC-062A-4A-2.0
APPD	SIZE: A4	WEIGHT	SHEET
		1/1	REVISION
			A0

ANGLAR	±5°
L ≤ 4	±0.2
4 < L ≤ 16	±0.3
16 < L ≤ 63	±0.4
L > 63	±0.5

UNSPECIFIED TOLERANCES



XKB INDUSTRIAL PRECISION CO., LIMITED

广东星坤科技股份有限公司
 生效
 日期
 文件工程章

MARK	DESCRIPTION	DATE	REVISED	APPROVED
Δx				
Δx				
Δx				
MARK	REVISIONS			

www.helloxkb.com www.helloxkb.cn www.xk-dg.cn

X-ON Electronics

Largest Supplier of Electrical and Electronic Components

Click to view similar products for [DC Power Connectors](#) category:

Click to view products by [XKB](#) manufacturer:

Other Similar products are found below :

[163-0308-EX](#) [163-4012-EX](#) [163-4117-EX](#) [163-MJ22-EX](#) [171-0721-EX](#) [KLDX-SMT-0202-BPTR](#) [163-0179-EX](#) [163-4015-EX](#) [171-0722-E](#)
[K596](#) [KLD-0201-BC](#) [4C6831AX](#) [LCB60PW-M](#) [LCB30PW-M](#) [LCB60PB-M](#) [LCC30PB-M](#) [LCB50PW-M](#) [LCB50-M](#) [LCC30-M](#) [LCB40PW-](#)
[M](#) [LCC30PW-M](#) [LCB50-F](#) [LCB40-F](#) [LCB30-F](#) [LCC40-M](#) [LCC40PB-M](#) [LCB40PB-M](#) [LCC40-F](#) [LCB60-M](#) [LCC40PW-M](#) [LCB50PB-M](#)
[513820200](#) [DC-S014A-D025-20A](#) [DC007B-2.5-J](#) [DC005-2.5](#) [DC005-2.5-T](#) [DC-S019A-D025-10A](#) [DC007B-2.0](#) [DC-018-2.5A-2.5](#) [DC-005-](#)
[A25](#) [DC-005-A20](#) [DC-002-100](#) [DC-031A-130](#) [DC-031A-100](#) [DC-003A-130](#) [DC-045-130](#) [DC-192-130](#) [DC-033-130](#) [DC-011-100](#) [DC-002F-](#)
[130](#)