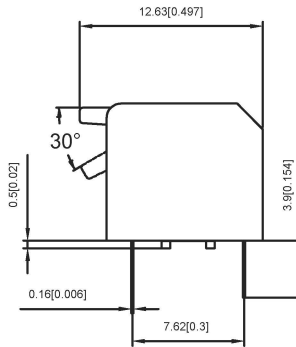
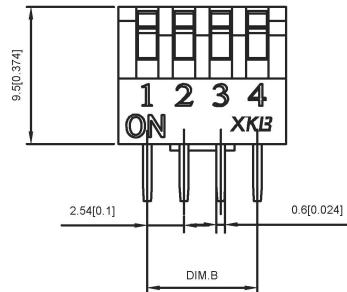
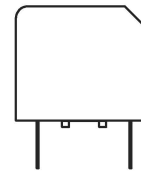
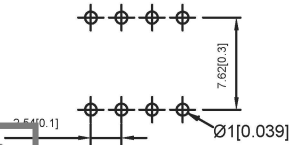
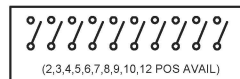


SECTION A-A



Projection (P)

CIRCUIT



Short (S)

PART NO.	NO.OF POS	DIM.A	DIM.B	Cover/Red(R)		Cover/Blue(BL)	
				Projedion(P)	Short(S)	Projedion(P)	Short(S)
DPL-01	1	3.98		DPL-01RP	DPL-01RS	DPL-01BLP	DPL-01BLS
DPL-02	2	6.52	2.54	DPL-02RP	DA-02RS	DPL-02BLP	DPL-02BLS
DPL-03	3	9.06	5.08	DPL-03RP	DA-03RS	DPL-03BLP	DPL-03BLS
DPL-04	4	11.6	7.62	DPL-04RP	DA-04RS	DPL-04BLP	DPL-04BLS
DPL-05	5	14.14	10.16	DPL-05RP	DA-05RS	DPL-05BLP	DPL-05BLS
DPL-06	6	16.68	12.7	DPL-06RP	DA-06RS	DPL-06BLP	DPL-06BLS
DPL-07	7	19.22	15.24	DPL-07RP	DA-07RS	DPL-07BLP	DPL-07BLS
DPL-08	8	21.76	17.78	DPL-08RP	DA-08RS	DPL-08BLP	DPL-08BLS
DPL-09	9	24.3	20.32	DPL-09RP	DA-09RS	DPL-09BLP	DPL-09BLS
DPL-10	10	26.84	22.86	DPL-10RP	DA-10RS	DPL-10BLP	DPL-10BLS
DPL-12	12	31.92	27.94	DPL-12RP	DA-12RS	DPL-12BLP	DPL-12BLS

SPECIFICATION

Contact Rating: 25mA,24V DC
 Contact Resistance: 50mΩ max
 Insulation Resistance: 100mΩ min.500V DC
 Dielectric Strength: 500V AC/1minute
 Operating Force: 1000gf max
 Travel: 2mm
 Operating Life: 3000cycles
 Operating Temp: -20°C~+70°C
 Storage Temp: -30°C~+80°C

ITEM	PAPT NAMF	QTY	MATERIAL	FINISHING
4	Terminal		Copper Alloy	T: Tin plated G: Plating Gold≥15MIU
3	Base	1	Pa66	Black
2	Keystake	1	Pa66	White
1	Cover	1	Pa66	Black Blue Red

广东星坤科技股份有限公司

生	日期
ΔX	
ΔX	
ΔX	
MARK	

文件工程章

REVISIONS	DATE	REVISED	APPROVED	UNSPECIFIED TOLERANCES

DSND		DATE	SCALE: N/A	MODEL TYPE: DIP SWITCH
DWN		DATE	VIEW:	PART NO.:
CHKD		DATE	UNIT: mm/in	DWG NO.: DPL-XX-X-X
APPD		DATE	SIZE: A4	WEIGHT: 1.0g
XKB INDUSTRIAL PRECISION CO., LIMITED				SHEET: 1/1
				REVISION: A0

www.helloxb.com www.helloxb.com www.helloxb.com

X-ON Electronics

Largest Supplier of Electrical and Electronic Components

Click to view similar products for [DIP Switches/SIP Switches](#) category:

Click to view products by [XKB](#) manufacturer:

Other Similar products are found below :

[79B10T](#) [8136-475G4T](#) [G7G-1A2-CB-DC12](#) [H7CZL8AC100240](#) [DRR60016](#) [DRS4016](#) [1825444-1](#) [200183](#) [206002](#) [219-6LPSTRF](#)
[25.350.0653.0](#) [SBS 5004 TG](#) [SDA10H1BDA](#) [97R06ST](#) [A2C-2A5](#) [1825444-7](#) [ADE08SA04](#) [ADE12S04](#) [192960010](#) [206005RAS](#) [206007](#) [2-](#)
[1825058-8](#) [25.330.0653.1](#) [25.352.0353.0](#) [CXDRIVEV2X](#) [IKN0600000](#) [IKN0800000](#) [LA2-002-DC24](#) [DSR02T](#) [DSS 208 N](#)
[E2FMX2D1M1TGJ03M](#) [NDI10H](#) [219-9MSTP](#) [EPM02FV](#) [206010RAST](#) [NDS08V](#) [76SB05](#) [TD06H0SK1](#) [Z7.255.9027.0](#) [1-1825058-3](#)
[1825428-4](#) [219-10LPSTF](#) [E3ZG6111D03M](#) [G4D212PUSTV2DC5](#) [EPG301BT06](#) [219-7LPSTRF](#) [1-1825058-6](#) [E3TSL23M5J03M](#) [Y5795](#)
[7R0060](#)