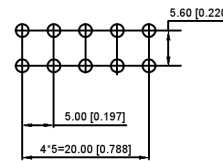
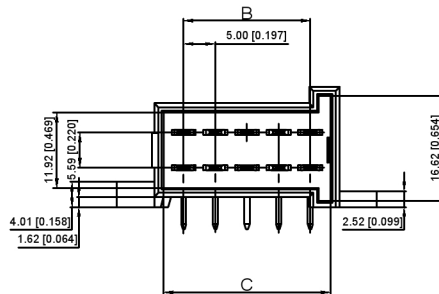
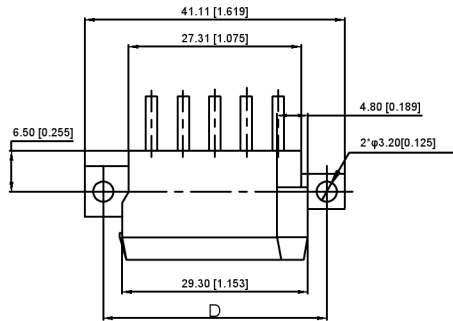
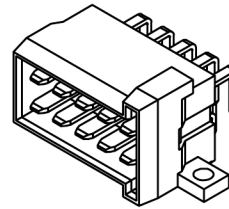
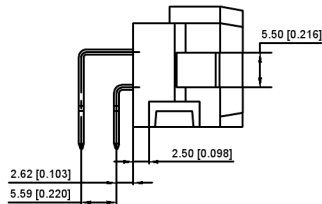
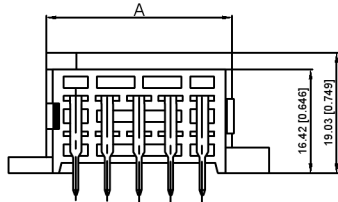


Technology for:

1. Plastic material: BT-GF30. Pin insertion material: copper tin plating
2. The inner and outer surfaces are smooth and clean, without flying edges, burrs, shrinkage pits and other defects
3. No leakage, backout, skew and other defects
4. Marks for important dimensions, 8 points in total:
5. Consider the influence of the position and shape of the pouring mouth on the appearance of the product.
6. Unmarked tolerance is class GB/T 1804-92m.n-s0 20-4E0 ~ 100, 100-20390

K 828801 WR- X
 ① ② ③ ④ ⑤

- ① K :XKBTEK-Car Connectors
- ② XKB Series NO.
- ③ Category:W-Wafer
- ④ Welding Board Angle:R-Right Angle 90°
- ⑤ Row No:Pin No
 :X-1(4Pin),X-2(6Pin),X-3(8Pin),
 X-4(10Pin),X-5(14Pin),
 X-6(18Pin),X-7(22Pin)



X	Pin	Dimensions(mm)			
		A	B	C	D
1	4	14.3	5	11.3	20.3
2	6	19.3	10	16.3	25.3
3	8	24.3	15	21.3	30.3
4	10	29.3	20	26.3	35.3
5	14	39.3	30	36.3	45.3
6	18	49.3	40	46.3	55.3
7	22	59.3	50	56.3	65.3

K828801WR-X	PBT 94V-0			K929504H
PART NO	Material	Material(Terminal)	Finish(Terminal)	Suitable XKB Terminal

广东星坤科技股份有限公司

生效

ΔX		日期
ΔX		
ΔX		
MARK		

DESCRIPTION

REVISIONS

DATE REVISED APPROVED

UNSPECIFIED TOLERANCES

www.helloxkb.com www.helloxkb.cn www.xk-dg.cn

ANGLAR	±5°
L ≤ 4	±0.2
4 < L ≤ 16	±0.3
16 < L ≤ 63	±0.4
L > 63	±0.5

XKLB

XKB INDUSTRIAL PRECISION CO., LIMITED

DSND	SCALE: N/A	MODEL TYPE:	K828801WR-X
DWN	VIEW:	PART NO.:	
CHKD	UNIT: mm/in	DWG NO.:	X-K828801WR-X
APPD	SIZE: A4	WEIGHT	SHEET
			REVISION
			1/1
			A0

文件工程章

X-ON Electronics

Largest Supplier of Electrical and Electronic Components

Click to view similar products for [Automotive Connectors](#) category:

Click to view products by [XKB](#) manufacturer:

Other Similar products are found below :

[003-018-000](#) [60993906-B](#) [M902-2131](#) [M902-2161](#) [M902-2344](#) [72.330.1035.1](#) [73.353.4028.0](#) [F166900](#) [F358300-B](#) [F407400](#) [776880-1](#)
[827153-1](#) [8N1515-32-24P](#) [9-1326729-8](#) [925474-1](#) [928905-1](#) [964562-4](#) [968782-1](#) [98891-1012](#) [12004475-L](#) [12020308](#) [12041318-B](#)
[12052466](#) [12059716](#) [12064869](#) [12015909](#) [1-21030-1](#) [12041254](#) [12041318](#) [12047946-B](#) [12110546-B](#) [12131792](#) [12084688](#) [12092346](#)
[HD34-18-14PT](#) [HD46-24-23SN-059](#) [HDB36-24-16PN-059](#) [HDP26-24-9SE-L015](#) [12185280](#) [12185550](#) [12336-12](#) [12191172-B](#) [12S](#)
[13545280](#) [13577943](#) [13681974](#) [13737722-B](#) [13830674](#) [13832576](#) [13849772](#)