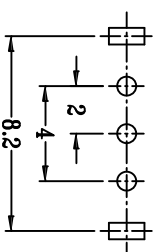
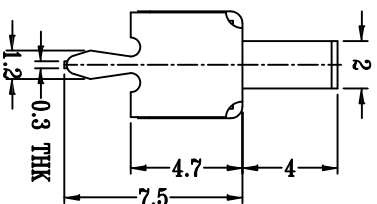
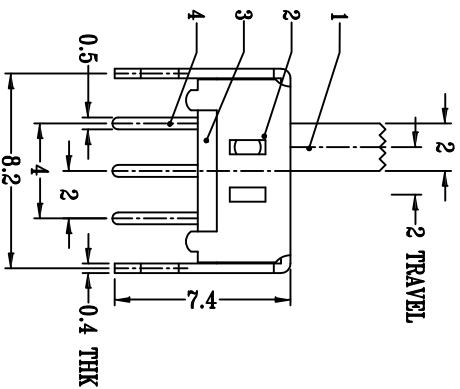


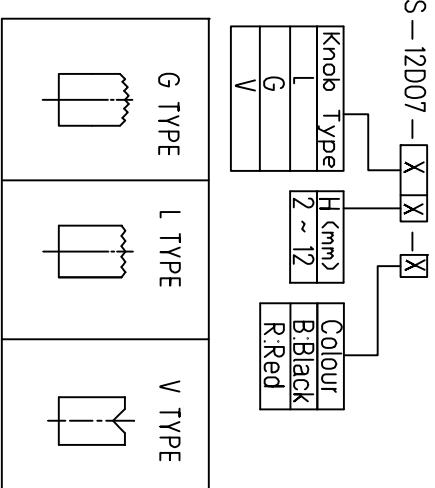
SCHMATIC (NON-SHORTING)



**P.C.B. LAYOUT
BOTTOM VIEW**



ITEM	PAPT NAME	TER.NO	QTY	MATERIAL	FINISHING	REMARK
①	Keystake	---	1	Pa66	Black	---
②	Cover	---	1	Sus	Natural	---
③	Base	---	1	Phenolic Resin	---	---
④	Terminal	---	3	Brass (0.30t)	ag Plated	---



RATING	0.3A 50V DC
CIRCUIT	1P2T
CONTACT RESISTANCE	100m MAX.
TRAVEL	2mm
OPERATING FORCE	250±100gf
OPERATING LIFE(cycles)	10,000

REVISIONS	DATE	REVISED	APPROVED	UNSPECIFIED TOLERANCES	DSND	DATE	SCALE: N/A	MODEL TYPE:
ΔX				ANGULAR			45°	SLIDE SWITCH
ΔX				L ≤ 4	DWN	DATE	VIEW:	PART NO.: SS-12D07
ΔX				4 < L ≤ 16	CHKD	DATE	UNIT: mm	DWG NO.: SS-12D07-X-X
MARK				16 < L ≤ 63	APPD	DATE	SIZE: A4	WEIGHT SHEET REVISION
				L > 63				1.0g 1/1 A0

XKB INDUSTRIAL PRECISION CO., LIMITED

X-ON Electronics

Largest Supplier of Electrical and Electronic Components

Click to view similar products for [Toggle Switches](#) category:

Click to view products by [XKB](#) manufacturer:

Other Similar products are found below :

[A19HV](#) [8A1-C-222](#) [60012L](#) [6006L](#) [6663](#) [7101MD9V30GE](#) [7101SPDV30BE](#) [7103SDV30BE](#) [7105D](#) [7108P3YAV2BE](#) [71YY50282](#)
[7201MD9AVBE](#) [7301K38](#) [7306K36](#) [7310K36](#) [7314K36](#) [7506K4](#) [7592K6](#) [7691K14](#) [7700K1](#) [8396K108](#) [8824K14](#) [8828K13](#) [G2VX](#) [G3VX](#)
[PS83-121G](#) [A101MD9AB04](#) [A101SD9AB04](#) [A101SDCQ04](#) [A103SD9AQ04](#) [A107TZB04](#) [A123P32YZQ](#) [A123S1YZG](#) [A127S1YCQ](#) [1-](#)
[1825192-0](#) [A131S1YZQ](#) [A201SCWZB04](#) [A207SYCB04](#) [A208J61ZQ0004](#) [A221K12KAG](#) [A221S1YZQ](#) [A221T1TCQ](#) [A232K12KZQ](#)
[A232M1YCQ](#) [A323S1CWZQ](#) [A423S1CWZG-M8](#) [A423S1YZQ](#) [12149A-3V](#) [12156AX408](#) [12147AGKX679](#)