

SCHEMATIC (NON-SHORTING)

MODEL CODE

SS-12D10

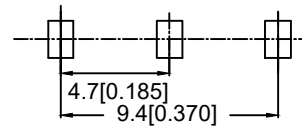
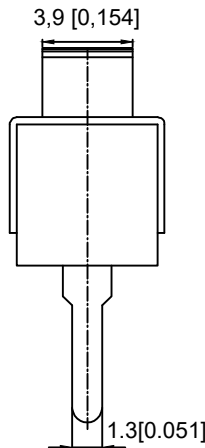
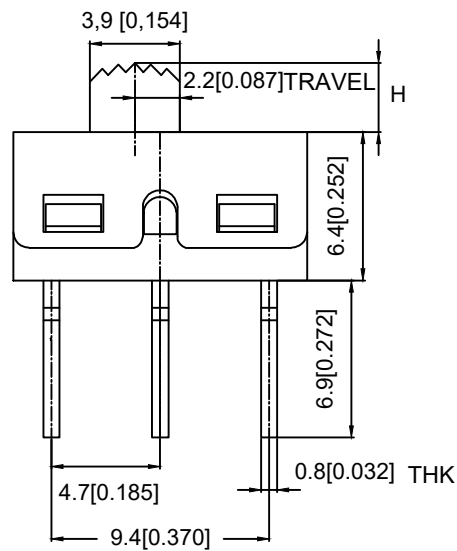
X X

X

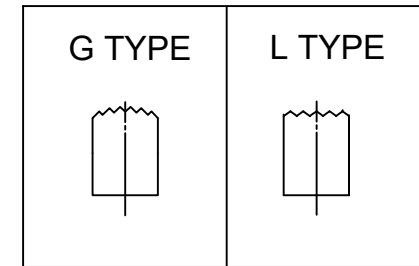
Knob Type
L
G

H(mm)
2~12

Colour
Blank: Standard Black
R: Red



P.C.B LAYOUT  
BOTTOM VIEW



Typical Specifications

1. Rating: AC 125V 3A
2. Insulation Resistance: 1,000M min
3. Dielectric strength: 1,500V RMS
4. Operating Life: 10,000 cycles

ITEM	PAPT NAME	TER.NO	QTY	MATERIAL	FINISHING	REMARK
⑤	Terminal	—	3	Copper Alloy	silver plated	—
④	Contact	—	1	Copper Alloy	silver plated	—
③	Housing	—	1	Stainless Steel	—	—
②	Slide Handle	—	1	Nylon	—	—
①	Case	—	1	Diallyl Phthalate (DAP)	—	—

REVISIONS					UNSPECIFIED TOLERANCES		DSND	DATE	SCALE: N/A	MODEL TYPE: SLIDE SWITCH
ΔX					ANGULAR	±5°	DWN	DATE	VIEW:	PART NO.:
ΔX					X.X	±0.2mm	CHKD	DATE	UNIT: mm/in	DWG NO.:
ΔX					X.XX	±0.1mm	APPD	DATE	SIZE: A4	SS-12D10XXX
MARK	DESCRIPTION	DATE	REVISED	APPROVED	X.XXX	±0.05mm	XKB INDUSTRIAL PRECISION CO., LIMITED			WEIGHT 1.0g
										SHEET 1/1
										REVISION A0

## X-ON Electronics

Largest Supplier of Electrical and Electronic Components

*Click to view similar products for [Toggle Switches](#) category:*

*Click to view products by [XKB](#) manufacturer:*

Other Similar products are found below :

[8928K478](#) [8951K2998](#) [8951K3310](#) [8956K1283](#) [8956K1286](#) [8956K1287](#) [8961K155](#) [8A1-C-222](#) [020017-13](#) [0090-0001](#) [0121-0015](#) [CS115W](#)  
[CS120W](#) [CS215I](#) [CS8275](#) [637H/25](#) [6663](#) [7101SPDV30BE](#) [7103SDV30BE](#) [7105D](#) [7108P3YAV2BE](#) [71YY50282](#) [7209SY9AQE](#)  
[7209SYCBE](#) [7300K36](#) [7301K38](#) [7301SS24484](#) [7303KZQE](#) [7306K36](#) [7310K36](#) [7503K21](#) [7506K4](#) [7565K6](#) [7595K6](#) [7660K12](#) [7691K14](#)  
[7700K1](#) [7704K3](#) [8391K108](#) [8396K108](#) [8811K17](#) [8812K14](#) [8824K14](#) [8825K5](#) [8828K13](#) [8835K3](#) [8858K44](#) [8E4011](#) [1202W](#)  
[A201SCWZB04](#)