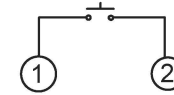


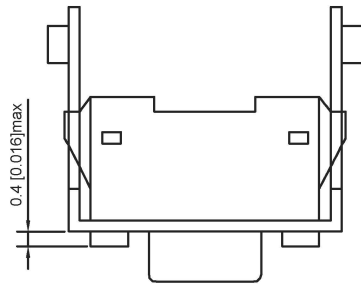
Circuit diagram



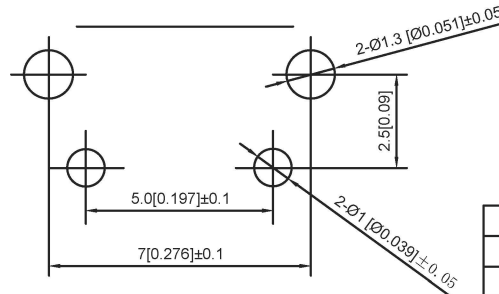
| Code-x | H | H1 |
|--------|------|-----|
| A | 3.15 | 4.3 |
| B | 3.85 | 5.0 |
| C | 4.85 | 6.0 |

SPECIFICATION

Contact Rating: 50mA, 12V DC
 Contact Resistance: 100mΩ max
 Insulation Resistance: 100mΩ min. 500V DC
 Dielectric Strength: 250V AC/1minute
 Travel: 0.25mm
 Operating Temp: -20°C~+70°C
 Storage Temp: -30°C~+80°C



P.C.B MOUNTING HOLE DIMENSIONS



| | |
|-----------------|-------------------------|
| PART NO | TC-1101V-X-X-X |
| Operating Force | A:100gf B:160gf C:260gf |
| Height | Code-X |
| Color | B:black W:white |

| | | | | | | |
|------|-----------|--------|-----|---------------|-------------------|--------|
| ⑤ | Terminal | — | 2 | Brass (0.30t) | Plating silvering | — |
| ④ | Contact | — | 1 | F.ag/Sus | Natural | — |
| ③ | Base | — | 1 | Lcp | | — |
| ② | Cover | — | 1 | Spcc | Plating Nickel | — |
| ① | Keystake | — | 1 | Pa46 | | — |
| ITEM | PAPT NAME | TER.NO | QTY | MATERIAL | FINISHING | REMARK |

广东星坤科技股份有限公司

生效日期

文件工程章

| REVISIONS | DESCRIPTION | DATE | REVISED | APPROVED | UNSPECIFIED TOLERANCES |
|-----------|-------------|------|---------|----------|------------------------|
| | | | | | |

www.helloxkb.com www.helloxkb.com www.helloxkb.com

| | | | | | |
|---------------------------------------|--|------|--|-------------|-------------------------|
| DSND | | DATE | | SCALE: N/A | MODEL TYPE: TACT SWITCH |
| DWN | | DATE | | VIEW: | PART NO.: |
| CHKD | | DATE | | UNIT: mm/in | DWG NO.: |
| APPD | | DATE | | SIZE: A4 | TC-1101V-X-X-X |
| XKB INDUSTRIAL PRECISION CO., LIMITED | | | | WEIGHT | SHEET |
| | | | | 1.0g | 1/1 |
| | | | | REVISION | A0 |

X-ON Electronics

Largest Supplier of Electrical and Electronic Components

Click to view similar products for [Tactile Switches](#) category:

Click to view products by [XKB](#) manufacturer:

Other Similar products are found below :

[5GTH92001](#) [5GTH9202242](#) [ADTSA62NV](#) [ADTSA62RV](#) [B3F-3123](#) [1977177-8](#) [1977266-1](#) [ADTSA63NV](#) [ADTSM21NSVTR](#)
[ADTSM25RVTR](#) [ADTSM32NVTR](#) [ADTSMW64RV](#) [FSMRA4JHA04](#) [GS4.70F300QP](#) [3ESH9R](#) [KSC241J](#) [SP DELTA](#) [LFS](#) [3FTL600RAS](#)
[3FTL640RAS](#) [Y96K132V0FPLFS](#) [5GSH92001](#) [5GTH9658222](#) [ADTSM31NVTR](#) [2-1977120-7](#) [TSJW-5.2-260-TR](#) [KMT011MNGJLHS](#)
[ADTSG648NV](#) [ADTSM62KSVTR](#) [ADTSM648NV](#) [95C06E3RAT](#) [3ATH9Q](#) [FSM4JSMLXTR](#) [FSM4JSMXL](#) [FSMRA8JHA04](#) [HARS0073](#)
[Y97HS12A5RAFP](#) [Y97BT23B2HAFP](#) [Y33R411N9FPLFT](#) [Y31C01402FPLFS](#) [PTS645SK50SMTR92](#) [ADTSM32NVB](#) [KMS233GPWTLFG](#)
[Y78B42324FP](#) [Y33R21116FPLFT](#) [Y31B43131FPLFG](#) [Y78B64124FP](#) [Y71243251FP](#) [Y33R31119FPLFT](#) [Y97HS12A5TAFP](#)
[PTS638SK25SMTR2LFS](#) [Y97LT25BADBFP](#)