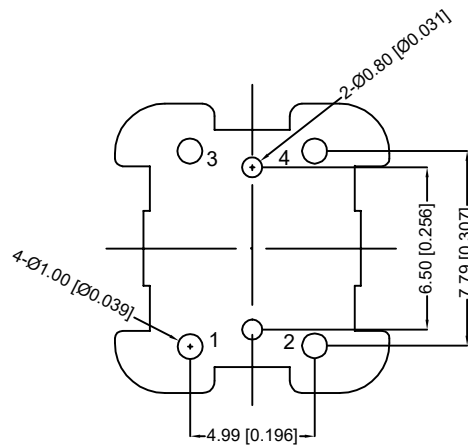
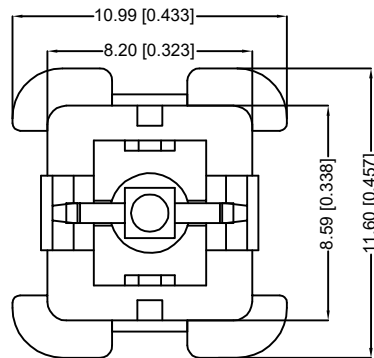
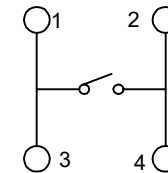


| | | |
|--------|-----------------------|-------------|
| 使用温度范围 | TemPerature | 40~70°C |
| 额定负荷 | Rated Load | DC 12V 0.1A |
| 接触电阻 | Contact Resistance | ≤0.05Ω |
| 绝缘电阻 | Insulation Resistance | >100MΩ |
| 耐压 | Withstand Voltage | AC250V |
| 动作力 | Actuating Force | 250~350gf |
| 寿命 | Life | 100000次 |



P.C.B

| Led Color | Part No |
|-----------|--------------|
| White | TM-006-D1-01 |
| Red | TM-006-D1-02 |
| Blue | TM-006-D1-03 |
| Green | TM-006-D1-04 |
| Yellow | TM-006-D1-05 |
| Orange | TM-006-D1-06 |

| ITEM | PAPT NAMF | TER,NO | QTY | MATERIAL | FINISHING | REMARK |
|------|-----------|--------|-----|---------------|-----------|--------|
| ⑦ | LED | | 1 | | | |
| ⑥ | Hat | | 1 | ABS | | |
| ⑤ | Terminal | — | 4 | Brass (0.30t) | ag Plated | — |
| ④ | Contact | — | 1 | F.ag/SUS | | — |
| ③ | Base | — | 1 | PA66 | | — |
| ① | Cover | — | 1 | PA66 | | — |
| ① | Keystake | — | 1 | POM | | — |

| | | |
|------|-------------|----------------------------------|
| DSND | SCALE: N/A | MODEL TYPE: LED SWITCH |
| DWN | VIEW: | PART NO.: TM-006-D1-X |
| CHKD | UNIT: mm/in | DWG NO.: |
| APPD | SIZE: A4 | |
| | WEIGHT | SHEET |
| | | 1/1 |
| | REVISIC | A0 |



XKB INDUSTRIAL PRECISION CO.,LIMITED

| MARK | DESCRIPTION | DATE | REVISED | APPROVED | ANGLAR | ±5° |
|------|-------------|------|---------|----------|------------------------|------|
| Δx | | | | | L ≤ 4 | ±0.2 |
| Δx | | | | | 4 < L ≤ 16 | ±0.3 |
| Δx | | | | | 16 < L ≤ 63 | ±0.4 |
| | | | | | L > 63 | ±0.5 |
| | | | | | UNSPECIFIED TOLERANCES | |

X-ON Electronics

Largest Supplier of Electrical and Electronic Components

Click to view similar products for [Tactile Switches](#) category:

Click to view products by [XKB](#) manufacturer:

Other Similar products are found below :

[5GTH92001](#) [5GTH9202242](#) [6407-250V-25273P](#) [ADTSA62NV](#) [ADTSA62RV](#) [B3F-3123](#) [1977177-8](#) [1977266-1](#) [ADTSA63NV](#)
[ADTSM21NSVTR](#) [ADTSM25RVTR](#) [ADTSM32NVTR](#) [ADTSMW64RV](#) [FSMRA4JHA04](#) [GS4.70F300QP](#) [KSC241J SP DELTA LFS](#)
[3FTL600RAS](#) [3FTL640RAS](#) [Y96K132V0FPLFS](#) [5GTH9658222](#) [ADTSM31NVTR](#) [2-1977120-7](#) [TSJW-5.2-260-TR](#) [KMT011MNGJLHS](#)
[B3WN6002S](#) [70-201.0](#) [ADTSG648NV](#) [ADTSM62KSVTR](#) [ADTSM648NV](#) [95C06E3RAT](#) [5GTH96561](#) [3ATH9Q](#) [FSMRA8JHA04](#)
[HARS0073](#) [Y33R411N9FPLFT](#) [Y31C01402FPLFS](#) [PTS645SK50SMTR92](#) [ADTSM32NVB](#) [KMS233GPWTLFG](#) [Y78B64124FP](#)
[Y96D113G0FP LFS](#) [Y33A812C5FP LFT](#) [Y56B2D120FP LFS](#) [PTS645 DVM83-BN125-2 LFS](#) [B3W 1000G](#) [KSC621G OL LFS](#) [B3F 1002C](#)
[B3F 0047H](#) [B3F 1000G](#) [B3W 1002C](#)