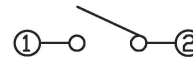


CIRCUIT DIAGRAM

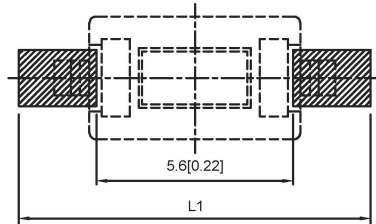
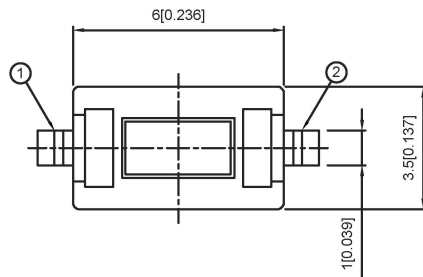


| | | |
|---|-----|----|
| P | L | L1 |
| A | 8.0 | 10 |
| | | |

SPECIFICATION

Contact Rating: 50mA, 12V DC
 Contact Resistance: 100mΩ max
 Insulation Resistance: 100mΩ min. 500V DC
 Dielectric Strength: 250V AC/1minute
 Travel: 0.25mm
 Operating Temp: -20°C ~ +70°C
 Storage Temp: -30°C ~ +80°C

P.C.B MOUNTING PATTERN DIMENSION
 The following soldering patterns are recommended for reflow soldering



| | |
|-----------------|---------------------------|
| PAPT NO | TS-1101S-X-X-B-X-X |
| Operating Force | A:100gf B:160gf C:260gf |
| Height | H:A:4.3 B:5.0 C:6.0 D:7.0 |
| Fixed column | A:With B:without |
| Color | B:black W:white |
| Pin pitch | P |

| ⑤ | Terminal | — | 2 | Brass (0.30t) | Plating silvering | — |
|------|-----------|--------|-----|---------------|-------------------|--------|
| ④ | Contact | — | 1 | F.ag/Sus | Natural | — |
| ③ | Base | — | 1 | Lcp | | — |
| ② | Cover | — | 1 | Spcc | Plating Nickel | — |
| ① | Keystake | — | 1 | Pa46 | | — |
| ITEM | PAPT NAMF | TER,NO | QTY | MATERIAL | FINISHING | REMARK |

广东星坤科技股份有限公司

生效日期

文件工程章

| | | |
|-----------|------------------------|---------------|
| REVISIONS | UNSPECIFIED TOLERANCES | |
| DATE | REVISED | APPROVED |
| units: mm | tolerance: | X.X ±0.2mm |
| | | X.XX ±0.1mm |
| | | X.XXX ±0.05mm |

| | | | |
|---------------------------------------|------|-------------|-----------------------------|
| DSND | DATE | SCALE: N/A | MODEL TYPE: TACT SWITCH |
| DWN | DATE | VIEW: | PART NO.: |
| CHKD | DATE | UNIT: mm/in | DWG NO.: TS-1101S-X-X-B-X-X |
| APPD | DATE | SIZE: A4 | WEIGHT: 1.0g |
| XKB INDUSTRIAL PRECISION CO., LIMITED | | | SHEET: 1/1 |
| | | | REVISION: A0 |

X-ON Electronics

Largest Supplier of Electrical and Electronic Components

Click to view similar products for [Tactile Switches](#) category:

Click to view products by [XKB](#) manufacturer:

Other Similar products are found below :

[5GTH92001](#) [5GTH9202242](#) [6407-250V-25273P](#) [ADTSA62NV](#) [ADTSA62RV](#) [B3F-3123](#) [1977177-8](#) [1977266-1](#) [ADTSA63NV](#)
[ADTSM21NSVTR](#) [ADTSM25RVTR](#) [ADTSM32NVTR](#) [ADTSMW64RV](#) [FSMRA4JHA04](#) [GS4.70F300QP](#) [3ESH9R](#) [KSC241J](#) [SP DELTA](#)
[LFS](#) [3FTL600RAS](#) [3FTL640RAS](#) [Y96K132V0FPLFS](#) [5GTH9658222](#) [ADTSM31NVTR](#) [2-1977120-7](#) [TSJW-5.2-260-TR](#)
[KMT011MNGJLHS](#) [70-201.0](#) [ADTSG648NV](#) [ADTSM62KSVTR](#) [ADTSM648NV](#) [95C06E3RAT](#) [5GTH96561](#) [3ATH9Q](#) [FSM4JSMLXTR](#)
[FSM4JSMXL](#) [FSMRA8JHA04](#) [HARS0073](#) [Y97HS12A5RAFP](#) [Y97BT23B2HAFP](#) [Y33R411N9FPLFT](#) [Y31C01402FPLFS](#)
[PTS645SK50SMTR92](#) [ADTSM32NVB](#) [KMS233GPWTLFG](#) [Y78B42324FP](#) [Y33R21116FPLFT](#) [Y31B43131FPLFG](#) [Y78B64124FP](#)
[Y71243251FP](#) [Y33R31119FPLFT](#) [Y97HS12A5TAFP](#)