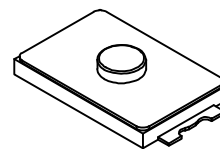
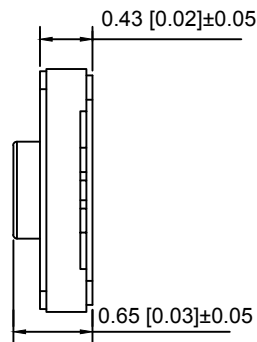


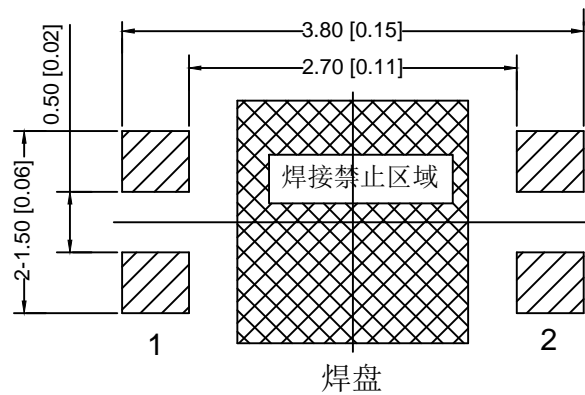
PCB.layout



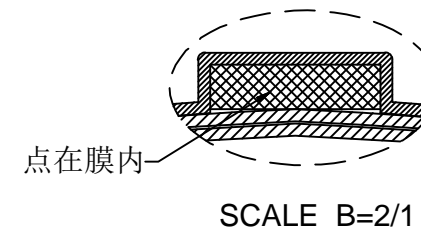
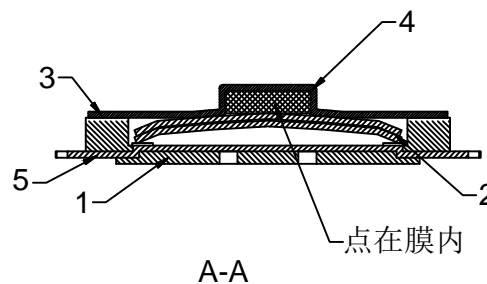
SPECIFICATION

Contact Rating:	50mA,12V DC
Contact Resistance:	500mΩ max
Insulation Resistance:	100mΩ min.500V DC
Dielectric Strength:	100V AC/1minute
Travel:	0.15±0.05mm
Operating Temp:	-30℃~+85℃
Storage Temp:	-30℃~+80℃
Operating Life:	100000cycles

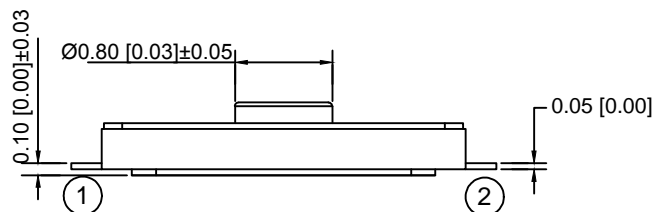
PAPT NO	TS-2030-X
Operating Force	B:160gf C:260gf
Height	H:0.58



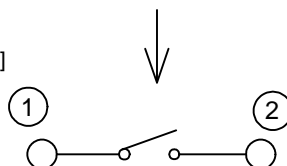
焊盘



SCALE B=2/1



Circuit Diagram



5	Terminal		1	C5191	Plating silvering	
4	Keystake		1	PI	black	
3	Film		1	PI	white	
2	Contact		2	SUS	ag	
1	Base		1	PA	black	
ITEM	PAPT NAMF	TER.NO	QTY	MATERLAL	FINISHING	REMARK

					ANGLAR	±5°
Δx					L ≤ 4	±0.2
Δx					4 < L ≤ 16	±0.3
Δx					16 < L ≤ 63	±0.4
MARK	DESCRIPTION	DATE	REVISED	APPROVED	L > 63	±0.5
REVISIONS					UNSPECIFIED TOLERANCES	
www.helloxkb.com www.helloxkb.cn www.xk-dg.cn						



XKB INDUSTRIAL PRECISION CO., LIMITED

DSND		SCALE: N/A	MODEL TYPE:	TS-2030-X
DWN		VIEW:	PART NO.:	
CHKD		UNIT: mm/in	DWG NO.:	X-TS-2030-X
APPD		SIZE: A4	WEIGHT	
			SHEET	1/1
			REVISION	A0

X-ON Electronics

Largest Supplier of Electrical and Electronic Components

Click to view similar products for [Tactile Switches](#) category:

Click to view products by [XKB](#) manufacturer:

Other Similar products are found below :

[5GTH92001](#) [5GTH9202242](#) [ADTSA62NV](#) [ADTSA62RV](#) [B3F-3123](#) [1977177-8](#) [1977266-1](#) [ADTSA63NV](#) [ADTSM21NSVTR](#)
[ADTSM25RVTR](#) [ADTSM32NVTR](#) [ADTSMW64RV](#) [FSMRA4JHA04](#) [GS4.70F300QP](#) [3ESH9R](#) [KSC241J](#) [SP DELTA LFS](#) [3FTL600RAS](#)
[3FTL640RAS](#) [Y96K132V0FPLFS](#) [5GSH92001](#) [5GTH9658222](#) [ADTSM31NVTR](#) [2-1977120-7](#) [TSJW-5.2-260-TR](#) [KMT011MNGJLHS](#)
[ADTSG648NV](#) [ADTSM62KSVTR](#) [ADTSM648NV](#) [95C06E3RAT](#) [3ATH9Q](#) [FSM4JSMLXTR](#) [FSM4JSMXL](#) [FSMRA8JHA04](#) [HARS0073](#)
[Y97HS12A5RAFP](#) [Y97BT23B2HAFP](#) [Y33R411N9FPLFT](#) [Y31C01402FPLFS](#) [PTS645SK50SMTR92](#) [ADTSM32NVB](#) [KMS233GPWTLFG](#)
[Y78B42324FP](#) [Y33R21116FPLFT](#) [Y31B43131FPLFG](#) [Y78B64124FP](#) [Y71243251FP](#) [Y33R31119FPLFT](#) [Y97HS12A5TAFP](#)
[PTS638SK25SMTR2LFS](#) [Y97LT25BADBFP](#)