

Specifications:

规格:
 Voltage rating:500VAC/DC
 额定电压: 500V AC/DC
 Current rating:5A AC/DC
 额定电流: 5A AC/DC
 Withstanding voltage:500V AC/minute
 耐受电压: ≥500V AC/分钟
 Temperature range:-25℃~+85℃
 温度范围: -40℃~+105℃
 Insulation resistance:500MQMIN
 绝缘电阻: ≥500MΩ
 Contact resistance:30mΩMax
 接触电阻: ≥30mΩ

Material:

材料:
 Rubber core:PBT+30% G.F(UL94V-0)-WH
 胶芯: PBT+30% G.F(UL94V-0)-WH
 Car PIN:C3604(BRASS)AU 1U
 车PIN:C3604(BRASS)镀金1u
 The iron shell:SPCC Nivkel Plating/Tin Plating
 铁壳: SPCC 镀镍/镀锡

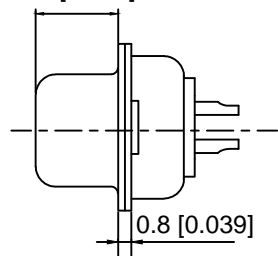
Attention:

The matters needing attention
 A、Salt spray test for 24H cannot have
 A、盐雾测试过24H不能有氧化生锈现象
 B、The finished product cannot have curved curved needle as well as the R
 Angle is.
 B、成品不能有弯针，R角不一致等不良。

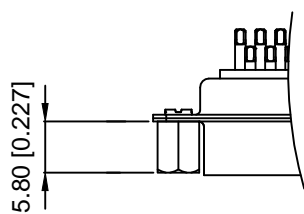
X01 XX W X X X X
 ① ② ③ ④ ⑤ ⑥ ⑦

- ① Series NO.
- ② Row No.Pin No.XX-09;15;25;37
- ③ Welding Board Angle :W-male
- ④ T: Tradutional C: Car-pin
- ⑤ Planting Categoty: 1:1U 2:2U 3:3U 4:5U 5:15U 6:30U 7 : AuSn
- ⑥ B:BLACK W:White BL:Blue Y:Yellow G:Green R:Red
- ⑦ 1:TYPE-1; 2:TYPE-2; 3:TYPE-3; 4:TYPE-4; 5:TYPE-5

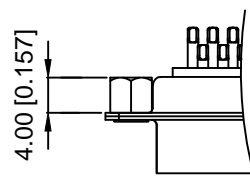
6.2 [0.242]



TYPE-2加前铆 (不通孔)



TYPE-3加后铆 (通孔)



NO of Contact	A±0.25	B±0.13	C±0.38	D±0.25
9	16.92	24.99	30.81	19.28
15	25.25	33.32	39.14	27.51
25	38.96	47.04	53.04	41.28
37	55.42	63.05	69.32	57.71

DSND	DATE	SCALE: N/A	MODEL TYPE:
DWN	DATE	VIEW:	PART NO.:
CHKD	DATE	UNIT: mm/in	DWG NO.:
APPD	DATE	SIZE: A4	X01XXWXXXX
XKB INDUSTRIAL PRECISION CO.,LIMITED			WEIGHT SHEET REVISION
			1.0g 1/1 A0

MARK	DESCRIPTION	DATE	REVISED	APPROVED	units: mm
					tolerance:
					X.X ±0.2mm
					X.XX ±0.1mm
					X.XXX ±0.05mm
REVISIONS					UNSPECIFIED TOLERANCES
www.xk-dg.cn www.helloxkb.com www.helloxkb.cn					

X-ON Electronics

Largest Supplier of Electrical and Electronic Components

Click to view similar products for [HDMI, Displayport & DVI Connectors](#) category:

Click to view products by [XKB](#) manufacturer:

Other Similar products are found below :

[30-1231](#) [30-528](#) [30-504](#) [30-519](#) [33DVIR-24S1B](#) [47648-2000](#) [2002-400](#) [TC142X](#) [769-103/021-000](#) [1932649-1](#) [CP30200GM3](#) [67881](#)
[HAFBF](#) [HBLBH](#) [HBLBI](#) [HAFBG](#) [HAFBH](#) [HAGBF](#) [HAGBG](#) [HAGBI](#) [HAGBJ](#) [HBLBJ](#) [AABIE](#) [AABIF](#) [AABIG](#) [AABIH](#) [AABII](#) [AABIJ](#)
[AABIK](#) [AABIL](#) [AACBE](#) [AACBF](#) [AACBG](#) [ABIBF](#) [ABIBG](#) [ABIBH](#) [42154](#) [AACBH](#) [AACBI](#) [AACBJ](#) [AACBK](#) [AACBL](#) [AAIBD](#) [AAIBF](#)
[AAIBH](#) [AAIBI](#) [AANBF](#) [AANBG](#) [AANBH](#) [AANBI](#)