

Specifications:

规格:
 Voltage rating:500VAC/DC
 额定电压: 500V AC/DC
 Current rating:5A AC/DC
 额定电流: 5A AC/DC
 Withstanding voltage:500V AC/minute
 耐受电压: ≥500V AC/分钟
 Temperature range:-25℃~+85℃
 温度范围: -40℃~+105℃
 Insulation resistance:500MQMIN
 绝缘电阻: ≥500MΩ
 Contact resistance:30mΩMax
 接触电阻: ≥30mΩ

Material:

材料:
 Rubber core:PBT+30% G.F(UL94V-0)-WH
 胶芯: PBT+30% G.F(UL94V-0)-WH
 Car PIN:C3604(BRASS)AU 1U
 车PIN:C3604(BRASS)镀金1u
 The iron shell:SPCC Nivkel Plating/Tin Plating
 铁壳: SPCC 镀镍/镀锡

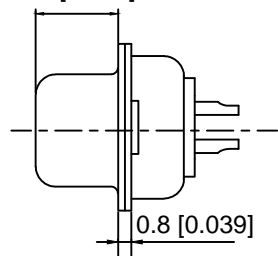
Attention:

The matters needing attention
 A、Salt spray test for 24H cannot have
 A、盐雾测试过24H不能有氧化生锈现象
 B、The finished product cannot have curved curved needle as well as the R
 Angle is.
 B、成品不能有弯针，R角不一致等不良。

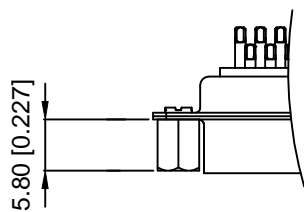
X01 XX W X X X X
 ① ② ③ ④ ⑤ ⑥ ⑦

- ① Series NO.
- ② Row No.Pin No.XX-09;15;25;37
- ③ Welding Board Angle :W-male
- ④ T: Tradutional C: Car-pin
- ⑤ Planting Categoty: 1:1U 2:2U 3:3U 4:5U 5:15U 6:30U 7 : AuSn
- ⑥ B:BLACK W:White BL:Blue Y:Yellow G:Green R:Red
- ⑦ 1:TYPE-1; 2:TYPE-2; 3:TYPE-3; 4:TYPE-4; 5:TYPE-5

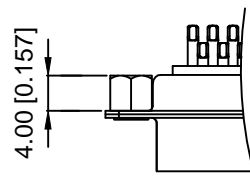
6.2 [0.242]



TYPE-2加前柳 (不通孔)



TYPE-3加后柳 (通孔)



| NO of Contact | A±0.25 | B±0.13 | C±0.38 | D±0.25 |
|---------------|--------|--------|--------|--------|
| 9 | 16.92 | 24.99 | 30.81 | 19.28 |
| 15 | 25.25 | 33.32 | 39.14 | 27.51 |
| 25 | 38.96 | 47.04 | 53.04 | 41.28 |
| 37 | 55.42 | 63.05 | 69.32 | 57.71 |

| | | | |
|--------------------------------------|------|-------------|-------------|
| DSND | DATE | SCALE: N/A | MODEL TYPE: |
| DWN | DATE | VIEW: | PART NO.: |
| CHKD | DATE | UNIT: mm/in | DWG NO.: |
| APPD | DATE | SIZE: A4 | X01XXWXXXX |
| XKB INDUSTRIAL PRECISION CO.,LIMITED | | | WEIGHT |
| | | | 1.0g |
| | | | SHEET |
| | | | 1/1 |
| | | | REVISION |
| | | | A0 |

| MARK | DESCRIPTION | DATE | REVISED | APPROVED | units: mm |
|---|-------------|------|---------|----------|------------------------|
| | | | | | tolerance: |
| | | | | | X.X ±0.2mm |
| | | | | | X.XX ±0.1mm |
| | | | | | X.XXX ±0.05mm |
| REVISIONS | | | | | UNSPECIFIED TOLERANCES |
| www.xk-dg.cn www.helloxkb.com www.helloxkb.cn | | | | | |

X-ON Electronics

Largest Supplier of Electrical and Electronic Components

Click to view similar products for [D-Sub Standard Connectors](#) category:

Click to view products by [XKB](#) manufacturer:

Other Similar products are found below :

[015-0339-000](#) [015-0341-000](#) [015-0349-000](#) [015-0350-000](#) [015-8544-011](#) [015-8755-001](#) [017041-0005](#) [020419-0104](#) [609-25P](#) [609-9P](#) [CT0-24-10SC](#) [CT0-36-3PC](#) [CT0E20-8PS](#) [CT0F16S-1PS](#) [CT0TA16-11SXCA232](#) [CT1E20-19SS](#) [CT2-10SL-3SC](#) [CT2-14S-2PCA34](#) [CT2-18-11PCAU](#) [CT2-22-19SC](#) [CT2-36-5PC](#) [CT6-10SL-3SC](#) [CT6-10SL-4SC](#) [CT6-14S-2SC](#) [CT6-16-12SC](#) [CT6-18-10PSA206](#) [CT6-18-10PSA232](#) [CT6-18-11PXSA206](#) [CT6-18-11PXSA232](#) [CT6-22-10PS](#) [CT6-24-5PC](#) [CT6-9767-18-8-18-4SS](#) [CT6E14S-5SC](#) [CT6E14SA7SC](#) [CT6E20-14SS](#) [CT6E22-14PC](#) [CT6E22-14PS](#) [CT6E22-19PS](#) [CT6E22-22PS](#) [CT6E24-10SC](#) [CT6F16S-1SC](#) [CT6FA10SL-4PS](#) [CT6LA20-19PC](#) [CT6M20-19SS](#) [CT6NSB4-20-8SS](#) [CT6TC14S-6SCAU](#) [CT6TC14S-7PS](#) [6STD15SCT99S40X](#) [6STF09PCM05B70X](#) [D20420-80](#)