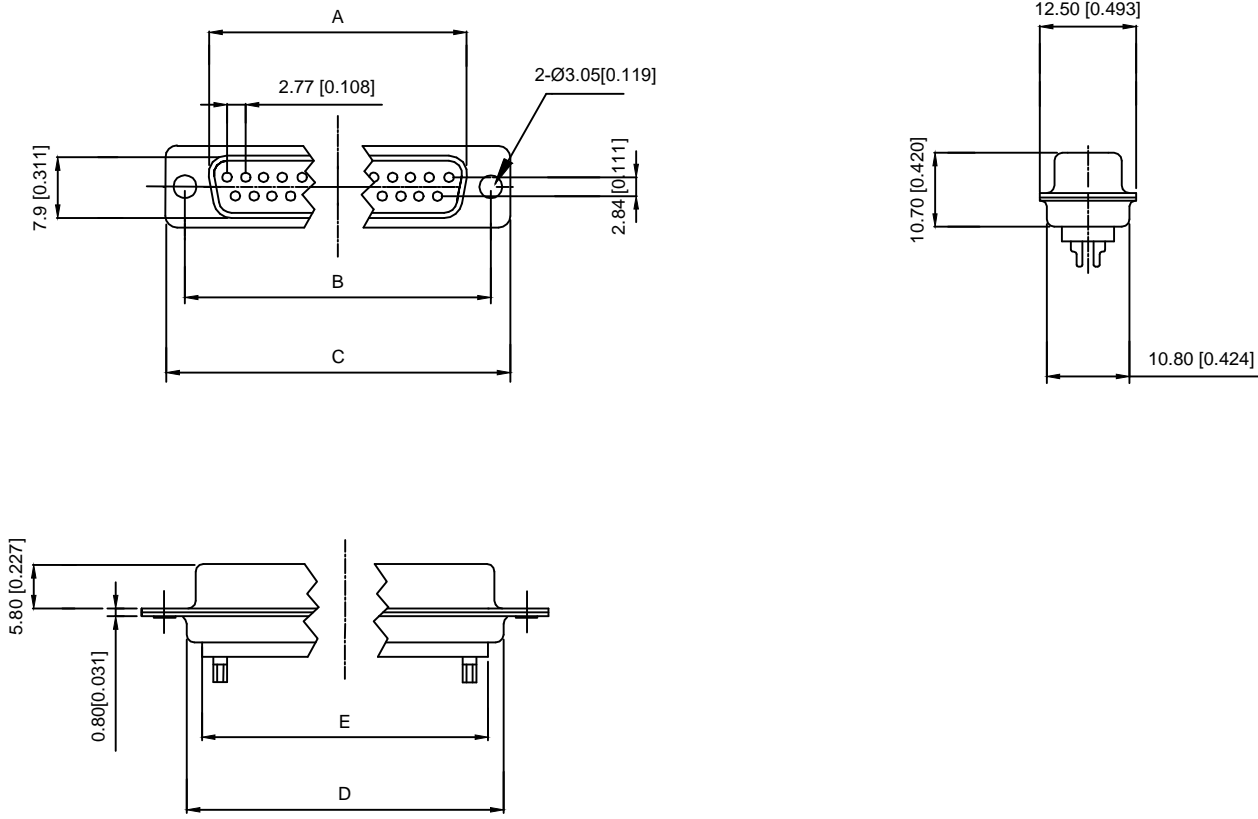


Specifications:

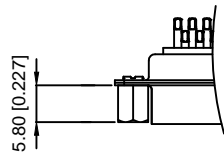
规格:
 Current rating:3A AC/DC
 额定电流: 3A AC/DC
 Withstanding voltage:1000
 AC/minute
 耐受电压: ≥1000V AC/分钟
 Temperature range:-25℃~+105℃
 温度范围: -55℃~+105℃
 Insulation resistance:500MΩMIN
 绝缘电阻: ≥500MΩ
 Contact resistance:25mΩMAN
 接触电阻: ≤25mΩ
 Material:
 材料:
 Contacts:Brass
 接触: 黄铜
 Insulator:PBT+30%
 绝缘体: PBT+30%
 Shell(Fead): SPCC
 外壳: 铁
 MECHANIAL CHATACTERICS:
 插拔力:
 Contact Insertion force:300gf MAX
 插入力:最大300gf
 Contact Separation Force:25gf MIN
 拔出力: 最小25gf



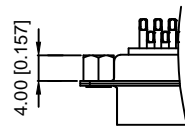
X01 XX F X X X X
 ① ② ③ ④ ⑤ ⑥ ⑦

- ① Series N0.
- ② Row No.Pin No.XX-09;15;25;37
- ③ Welding Board Angle :F-Fmale
- ④ T: Tradutional C: Car-pin
- ⑤ Planting Cateogry: 1:1U 2:2U 3:3U 4:5U 5:15U 6:30U 7: Au Sn
- ⑥ B:BLACK W:White BL:Blue Y:Yellow G:Green R:Red
- ⑦ 1:TYPE-1; 2:TYPE-2; 3:TYPE-3; 4:TYPE-4; 5:TYPE-5

TYPE-2加前铆 (不通孔)



TYPE-3加后铆 (通孔)



NO.POS	A±0.38	B±0.13	C±0.20	D±0.38
9PIN	16.33	24.99	30.80	19.28
15PIN	24.66	33.32	39.20	27.65
25PIN	38.35	47.04	53.10	41.20
37PIN	54.80	63.50	69.40	57.44

DSND		DATE		SCALE: N/A	MODEL TYPE:
DWN		DATE		VIEW:	PART NO.:
CHKD		DATE		UNIT: mm/in	DWG NO.:
APPD		DATE		SIZE: A4	X01XXFXXXX
				WEIGHT	*SHEET
XKB INDUSTRIAL PRECISION CO.,LIMITED				1.0g	1/1
					REVISION
					A0

					units: mm
					tolerance:
					X.X ±0.2mm
					X.XX ±0.1mm
					X.XXX ±0.05mm
MARK	DESCRIPTION	DATE	REVISED	APPROVED	UNSPECIFIED TOLERANCES
REVISIONS					
www.xk-dg.cn www.helloxkb.com www.helloxkb.cn					

X-ON Electronics

Largest Supplier of Electrical and Electronic Components

Click to view similar products for [D-Sub Standard Connectors](#) category:

Click to view products by [XKB](#) manufacturer:

Other Similar products are found below :

[015-0339-000](#) [015-0341-000](#) [015-0349-000](#) [015-0350-000](#) [015-8544-011](#) [015-8755-001](#) [017041-0005](#) [020419-0104](#) [609-25P](#) [609-9P](#) [CT0-24-10SC](#) [CT0-36-3PC](#) [CT0E20-8PS](#) [CT0F16S-1PS](#) [CT0TA16-11SXCA232](#) [CT1E20-19SS](#) [CT2-10SL-3SC](#) [CT2-14S-2PCA34](#) [CT2-18-11PCAU](#) [CT2-22-19SC](#) [CT2-36-5PC](#) [CT6-10SL-3SC](#) [CT6-10SL-4SC](#) [CT6-14S-2SC](#) [CT6-16-12SC](#) [CT6-18-10PSA206](#) [CT6-18-10PSA232](#) [CT6-18-11PXSA206](#) [CT6-18-11PXSA232](#) [CT6-22-10PS](#) [CT6-24-5PC](#) [CT6-9767-18-8-18-4SS](#) [CT6E14S-5SC](#) [CT6E14SA7SC](#) [CT6E20-14SS](#) [CT6E22-14PC](#) [CT6E22-14PS](#) [CT6E22-19PS](#) [CT6E22-22PS](#) [CT6E24-10SC](#) [CT6F16S-1SC](#) [CT6FA10SL-4PS](#) [CT6LA20-19PC](#) [CT6M20-19SS](#) [CT6NSB4-20-8SS](#) [CT6TC14S-6SCAU](#) [CT6TC14S-7PS](#) [6STD15SCT99S40X](#) [6STF09PCM05B70X](#) [D20420-80](#)