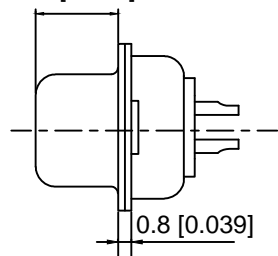


Specifications:
 规格:
 Voltage rating:500VAC/DC
 额定电压: 500V AC/DC
 Current rating:5A AC/DC
 额定电流: 5A AC/DC
 Withstanding voltage:500V AC/minute
 耐受电压: ≥500V AC/分钟
 Temperature range:-25℃~+85℃
 温度范围: -40℃~+105℃
 Insulation resistance:500MQMIN
 绝缘电阻: ≥500MΩ
 Contact resistance:30mΩMax
 接触电阻: ≥30mΩ
 Material:
 材料:
 Rubber core:PBT+30% G.F(UL94V-0)-WH
 胶芯: PBT+30% G.F(UL94V-0)-WH
 Car PIN:C3604(BRASS)AU 1U
 车PIN:C3604(BRASS)镀金1u
 The iron shell:SPCC Nivkel Plating/Tin Plating
 铁壳: SPCC 镀镍/镀锡
 注意事项:
 The matters needing attention
 A、Salt spray test for 24H cannot have
 A、盐雾测试过24H不能有氧化生锈现象
 B、The finished product cannot have curved curved needle as well as the R
 Angle is.
 B、成品不能有弯针, R角不一致等不良。

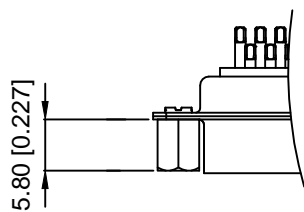
X01 XX W X X X X
 ① ② ③ ④ ⑤ ⑥ ⑦

- ① Series NO.
- ② Row No.Pin No.XX-09;15;25;37
- ③ Welding Board Angle :W-male
- ④ T: Tradutional C: Car-pin
- ⑤ Planting Categoty: 1:1U 2:2U 3:3U 4:5U 5:15U 6:30U 7 : AuSn
- ⑥ B:BLACK W:White BL:Blue Y:Yellow G:Green R:Red
- ⑦ 1:TYPE-1; 2:TYPE-2; 3:TYPE-3; 4:TYPE-4; 5:TYPE-5

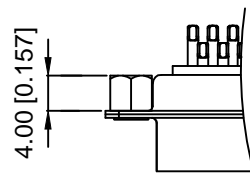
6.2 [0.242]



TYPE-2加前铆 (不通孔)



TYPE-3加后铆 (通孔)



NO of C0ntact	A±0.25	B±0.13	C±0.38	D±0.25
9	16.92	24.99	30.81	19.28
15	25.25	33.32	39.14	27.51
25	38.96	47.04	53.04	41.28
37	55.42	63.05	69.32	57.71

					units: mm	DSND	DATE	SCALE: N/A	MODEL TYPE:		
					tolerance:	DWN	DATE	VIEW:	PART NO.:		
					X.X ±0.2mm	CHKD	DATE	UNIT: mm/in	DWG NO.:		
					X.XX ±0.1mm	APPD	DATE	SIZE: A4	X01XXWXXXX		
					X.XXX ±0.05mm				WEIGHT	SHEET	REVISION
REVISIONS					UNSPECIFIED TOLERANCES	XKB INDUSTRIAL PRECISION CO.,LIMITED			1.0g	1/1	A0
www.xk-dg.cn www.helloxkb.com www.helloxkb.cn											

X-ON Electronics

Largest Supplier of Electrical and Electronic Components

Click to view similar products for [HDMI, Displayport & DVI Connectors](#) category:

Click to view products by [XKB](#) manufacturer:

Other Similar products are found below :

[30-528](#) [30-504](#) [33DVIR-24S1B](#) [47648-2000](#) [TC142X](#) [1932649-1](#) [HAGBH](#) [ABIBG](#) [AAIBH](#) [52355](#) [XHLJQ-00026](#) [HDMI-019R](#)
[G46M2013201AWEU](#) [ST-0277D00-052-142](#) [HC-PJ-320A-3P-D](#) [HC-PJ-3133-5P-D](#) [PJ-342](#) [141](#) [PJ-320A-4P DIP](#) [HC-PJ-325C-5P](#) [HC-PJ-320D-4P-S](#) [HC-PJ-3133-6P-S](#) [D-SUB-DR-9PCM-CB](#) [ST-0275S00-082-182](#) [HC-PJ-320A-4P-D](#) [HC-PJ-325A-5P](#) [HC-PJ-3134-6P-D](#) [HDR-HX-102DIP](#) [HDMI-GD-121PWB](#) [C2939191](#) [C2939584](#) [PJ-208](#) [PJ-2040](#) [PJ-3580A-6A](#) [PJ-399M](#) [PJ-328B-4B](#) [PJ-3930-7A](#) [PJ-615-5A](#) [PJ-332-6A](#) [KH-HDMI-0001](#) [KH-PJ-209-SMT](#) [KH-HDMI-0035-XK](#) [KH-PJ-328A-5P](#) [KH-PJ-322](#) [KH-PJ-327E-SMT](#) [KH-PJ-320A-5.6](#) [KH-HDR15P-F3.08](#) [KH-HDMI-0005A-SMT](#) [KH-HDMI-0021-JBS](#) [KH-HDMI-0002](#) [KH-PJ-234-4P-SMT](#)