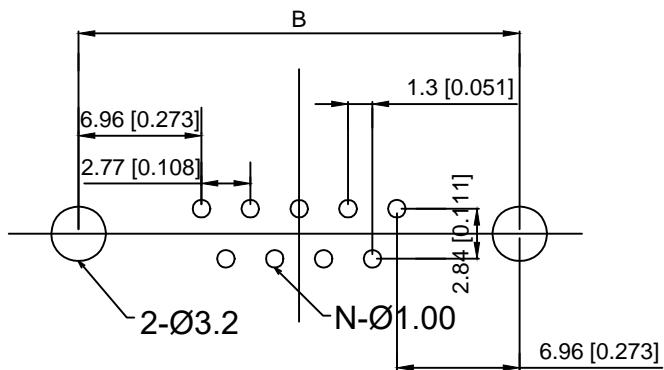
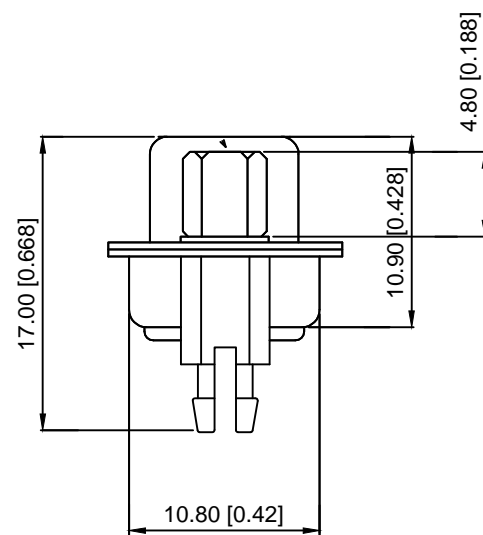


Specifications:  
 规格:  
 Current rating:5A AC/DC  
 额定电流: 5A AC/DC  
 Withstanding voltage:500V AC/MAX  
 耐受电压: ≤500V AC/分钟  
 Temperature range:-25℃~+85℃  
 温度范围: -55℃~+85℃  
 Insulation resistance:1000MΩMIN  
 绝缘电阻: ≥1000MΩ  
 Contact resistance:30mΩMAN  
 接触电阻: ≤30mΩ  
 Material:  
 材料:  
 Contacts:Brass C2680  
 接触: 黄铜 C2680  
 Insulator:PBT+G.F  
 绝缘体: PBT+G.F  
 SHELL:SPCC  
 外壳: 铁



PCB LAYOUT



X02 XX F X X X 5  
 ① ② ③ ④ ⑤ ⑥ ⑦

- ① Series NO.
- ② Row No.Pin No.XX-09;15;25;37
- ③ Welding Board Angle :F-Fmale
- ④ T: Tradutional C: Car-pin
- ⑤ Planting Category: 1:1U 2:2U 3:3U 4:5U 5:15U 6:30U 7:AuSn
- ⑥ B:BLACK W:White BL:Blue Y:Yellow G:Green R:Red
- ⑦ 5:Front lock screw after riveting

NO.POS	A±0.38	B±0.13	C±0.20	D±0.38
9PIN	30.80	24.99	16.33	19.28
15PIN	39.20	33.32	24.66	27.65
25PIN	53.10	47.04	38.35	41.20
37PIN	69.40	63.50	54.80	57.44

					units: mm	DSND	DATE	SCALE: N/A	MODEL TYPE:
Δx					tolerance:	DWN	DATE	VIEW:	PART NO.:
Δx					X.X	CHKD	DATE	UNIT: mm/in	DWG NO.:
Δx					X.XX	APPD	DATE	SIZE: A4	X02XXFXXX5
MARK	DESCRIPTION	DATE	REVISED	APPROVED	X.XXX				WEIGHT
REVISIONS					UNSPECIFIED TOLERANCES	XKB INDUSTRIAL PRECISION CO.,LIMITED			1.0g
www.xk-dg.cn www.helloxkb.com www.helloxkb.cn								SHEET	REVISION
								1/1	A0

## X-ON Electronics

Largest Supplier of Electrical and Electronic Components

*Click to view similar products for [D-Sub Standard Connectors](#) category:*

*Click to view products by [XKB](#) manufacturer:*

Other Similar products are found below :

[015-0339-000](#) [015-0341-000](#) [015-0349-000](#) [015-0350-000](#) [015-8544-011](#) [015-8755-001](#) [017041-0005](#) [020419-0104](#) [609-25P](#) [609-9P](#)  
[M24308/2-23Z](#) [CT0-24-10SC](#) [CT0-36-3PC](#) [CT0E20-8PS](#) [CT0F16S-1PS](#) [CT0TA16-11SXCA232](#) [CT1E20-19SS](#) [CT2-10SL-3SC](#) [CT2-14S-2PCA34](#) [CT2-18-11PCAU](#) [CT2-22-19SC](#) [CT2-36-5PC](#) [CT6-10SL-3SC](#) [CT6-10SL-4SC](#) [CT6-14S-2SC](#) [CT6-16-12SC](#) [CT6-18-10PSA206](#)  
[CT6-18-10PSA232](#) [CT6-18-11PXSA206](#) [CT6-18-11PXSA232](#) [CT6-22-10PS](#) [CT6-24-5PC](#) [CT6-9767-18-8-18-4SS](#) [CT6E14S-5SC](#)  
[CT6E14SA7SC](#) [CT6E20-14SS](#) [CT6E22-14PC](#) [CT6E22-14PS](#) [CT6E22-19PS](#) [CT6E22-22PS](#) [CT6E24-10SC](#) [CT6F16S-1SC](#) [CT6FA10SL-4PS](#)  
[CT6LA20-19PC](#) [CT6M20-19SS](#) [CT6NSB4-20-8SS](#) [CT6TC14S-6SCAU](#) [CT6TC14S-7PS](#) [6STD15SCT99S40X](#) [6STF09PCM05B70X](#)