

PCBLAYOUT

Specifications:

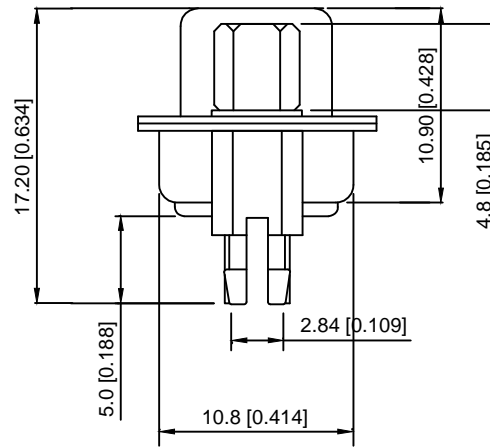
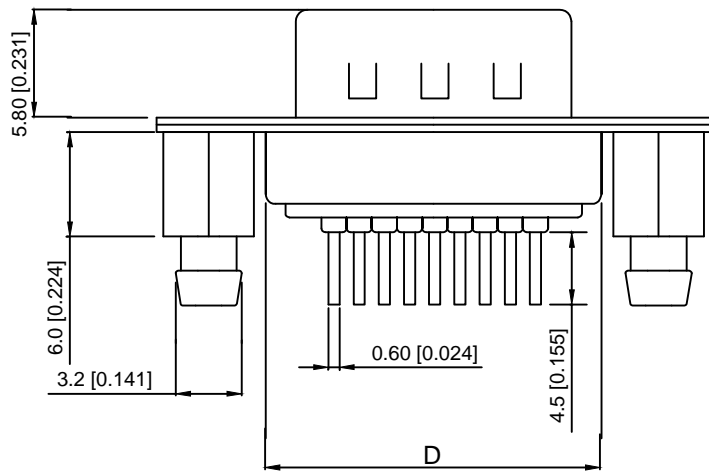
规格:
 Current rating:3A AC/DC
 额定电流: 3A AC/DC
 Withstanding voltage:1000 AC/minute
 耐受电压: ≥1000V AC/分钟
 Temperature range:-25 °C~+105 °C
 温度范围: -55 °C~+105 °C
 Insulation resistance:500MΩMIN
 绝缘电阻: ≥500MΩ
 Contact resistance:25mΩMAN
 接触电阻: ≤25mΩ

Material:

材料:
 Contacts:Brass Gold Plated
 接触: 黄铜镀金
 Insulator:PBT+30 %
 绝缘体: PBT+30 %
 Shell(Frond)Steel NI Plated
 外壳: 镀钢
 Shell (Fead):Steel TIN Plated
 外壳: 钢镀锡

MECHANIAL CHATACTERICS:

插拔力:
 Contact Insertion force:300gfMAX
 插入力:最大300gf
 Contact Separation Force:25gf MIN
 拔出力: 最小25gf



9-37P公(插板式)后铆鱼叉螺母+前锁螺丝

X02 XX W X X X 5

① ② ③ ④ ⑤ ⑥ ⑦

- ① Series N0.
- ② Row No.Pin No.XX-09;15;25;37
- ③ Welding Board Angle :W-male
- ④ T: Tradtional C: Car-pin
- ⑤ Planting Categoty: 1:1U 2:2U 3:3U 4:5U 5:15U 6:30U 7:AuSN
- ⑥ B:BLACK W:White BL:Blue Y:Yellow G:Green R:Red
- ⑦ 5:Front lock screw after riveting

| NO.POS | A±0.38 | B±0.13 | C±0.20 | D±0.38 |
|--------|--------|--------|--------|--------|
| 9PIN | 30.80 | 24.99 | 16.92 | 19.28 |
| 15PIN | 39.20 | 33.32 | 25.25 | 27.65 |
| 25PIN | 53.10 | 47.04 | 38.96 | 41.20 |
| 37PIN | 69.40 | 63.50 | 55.42 | 57.44 |

| | | | |
|--------------------------------------|------|-------------|-------------|
| DSND | DATE | SCALE: N/A | MODEL TYPE: |
| DWN | DATE | VIEW: | PART NO.: |
| CHKD | DATE | UNIT: mm/in | DWG NO.: |
| APPD | DATE | SIZE: A4 | X02XXWXXX5 |
| KXB INDUSTRIAL PRECISION CO.,LIMITED | | | WEIGHT |
| | | | 1.0g |
| | | | SHEET |
| | | | 1/1 |
| | | | REVISION |
| | | | A0 |

| MARK | DESCRIPTION | DATE | REVISED | APPROVED | units: mm |
|------|-------------|------|---------|----------|------------------------|
| | | | | | tolerance: |
| | | | | | X.X ±0.2mm |
| | | | | | X.XX ±0.1mm |
| | | | | | X.XXX ±0.05mm |
| | | | | | UNSPECIFIED TOLERANCES |

X-ON Electronics

Largest Supplier of Electrical and Electronic Components

Click to view similar products for [D-Sub Standard Connectors](#) category:

Click to view products by [XKB](#) manufacturer:

Other Similar products are found below :

[015-0339-000](#) [015-0341-000](#) [015-0349-000](#) [015-0350-000](#) [015-8544-011](#) [015-8755-001](#) [017041-0005](#) [020419-0104](#) [609-25P](#) [609-9P](#)
[M24308/2-23Z](#) [CT0-24-10SC](#) [CT0-36-3PC](#) [CT0E20-8PS](#) [CT0F16S-1PS](#) [CT0TA16-11SXCA232](#) [CT1E20-19SS](#) [CT2-10SL-3SC](#) [CT2-14S-2PCA34](#) [CT2-18-11PCAU](#) [CT2-22-19SC](#) [CT2-36-5PC](#) [CT6-10SL-3SC](#) [CT6-10SL-4SC](#) [CT6-14S-2SC](#) [CT6-16-12SC](#) [CT6-18-10PSA206](#)
[CT6-18-10PSA232](#) [CT6-18-11PXSA206](#) [CT6-18-11PXSA232](#) [CT6-22-10PS](#) [CT6-24-5PC](#) [CT6-9767-18-8-18-4SS](#) [CT6E14S-5SC](#)
[CT6E14SA7SC](#) [CT6E20-14SS](#) [CT6E22-14PC](#) [CT6E22-14PS](#) [CT6E22-19PS](#) [CT6E22-22PS](#) [CT6E24-10SC](#) [CT6F16S-1SC](#) [CT6FA10SL-4PS](#)
[CT6LA20-19PC](#) [CT6M20-19SS](#) [CT6NSB4-20-8SS](#) [CT6TC14S-6SCAU](#) [CT6TC14S-7PS](#) [6STD15SCT99S40X](#) [6STF09PCM05B70X](#)