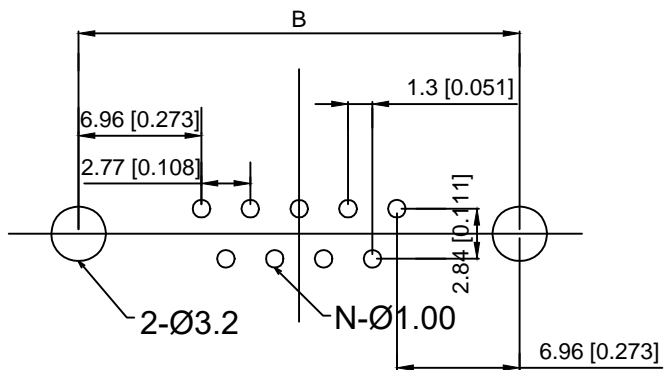
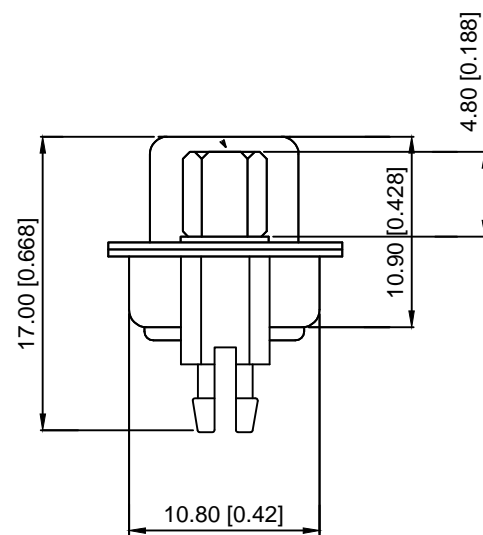


Specifications:
 规格:
 Current rating:5A AC/DC
 额定电流: 5A AC/DC
 Withstanding voltage:500V AC/MAX
 耐受电压: ≤500V AC/分钟
 Temperature range:-25℃~+85℃
 温度范围: -55℃~+85℃
 Insulation resistance:1000MΩMIN
 绝缘电阻: ≥1000MΩ
 Contact resistance:30mΩMAN
 接触电阻: ≤30mΩ
 Material:
 材料:
 Contacts:Brass C2680
 接触: 黄铜 C2680
 Insulator:PBT+G.F
 绝缘体: PBT+G.F
 SHELL:SPCC
 外壳: 铁



PCB LAYOUT



X02 XX F X X X 5
 ① ② ③ ④ ⑤ ⑥ ⑦

- ① Series NO.
- ② Row No.Pin No.XX-09;15;25;37
- ③ Welding Board Angle :F-Fmale
- ④ T: Tradutional C: Car-pin
- ⑤ Planting Category: 1:1U 2:2U 3:3U 4:5U 5:15U 6:30U 7:AuSn
- ⑥ B:BLACK W:White BL:Blue Y:Yellow G:Green R:Red
- ⑦ 5:Front lock screw after riveting

| NO.POS | A±0.38 | B±0.13 | C±0.20 | D±0.38 |
|--------|--------|--------|--------|--------|
| 9PIN | 30.80 | 24.99 | 16.33 | 19.28 |
| 15PIN | 39.20 | 33.32 | 24.66 | 27.65 |
| 25PIN | 53.10 | 47.04 | 38.35 | 41.20 |
| 37PIN | 69.40 | 63.50 | 54.80 | 57.44 |

| | | | | | | | | | |
|---|-------------|------|---------|----------|------------------------|--------------------------------------|------|-------------|-------------|
| | | | | | units: mm | DSND | DATE | SCALE: N/A | MODEL TYPE: |
| Δx | | | | | tolerance: | DWN | DATE | VIEW: | PART NO.: |
| Δx | | | | | X.X | CHKD | DATE | UNIT: mm/in | DWG NO.: |
| Δx | | | | | X.XX | APPD | DATE | SIZE: A4 | X02XXFXXX5 |
| MARK | DESCRIPTION | DATE | REVISED | APPROVED | X.XXX | | | | WEIGHT |
| REVISIONS | | | | | UNSPECIFIED TOLERANCES | XKB INDUSTRIAL PRECISION CO.,LIMITED | | | 1.0g |
| www.xk-dg.cn www.helloxkb.com www.helloxkb.cn | | | | | | | | | SHEET |
| | | | | | | | | | 1/1 |
| | | | | | | | | | REVISION |
| | | | | | | | | | A0 |

X-ON Electronics

Largest Supplier of Electrical and Electronic Components

Click to view similar products for [D-Sub Standard Connectors](#) category:

Click to view products by [XKB](#) manufacturer:

Other Similar products are found below :

[015-0339-000](#) [015-0341-000](#) [015-0349-000](#) [015-0350-000](#) [015-8544-011](#) [015-8755-001](#) [017041-0005](#) [020419-0104](#) [609-25P](#) [609-9P](#)
[M24308/2-23Z](#) [CT0-24-10SC](#) [CT0-36-3PC](#) [CT0E20-8PS](#) [CT0F16S-1PS](#) [CT0TA16-11SXCA232](#) [CT1E20-19SS](#) [CT2-10SL-3SC](#) [CT2-14S-2PCA34](#) [CT2-18-11PCAU](#) [CT2-22-19SC](#) [CT2-36-5PC](#) [CT6-10SL-3SC](#) [CT6-10SL-4SC](#) [CT6-14S-2SC](#) [CT6-16-12SC](#) [CT6-18-10PSA206](#)
[CT6-18-10PSA232](#) [CT6-18-11PXSA206](#) [CT6-18-11PXSA232](#) [CT6-22-10PS](#) [CT6-24-5PC](#) [CT6-9767-18-8-18-4SS](#) [CT6E14S-5SC](#)
[CT6E14SA7SC](#) [CT6E20-14SS](#) [CT6E22-14PC](#) [CT6E22-14PS](#) [CT6E22-19PS](#) [CT6E22-22PS](#) [CT6E24-10SC](#) [CT6F16S-1SC](#) [CT6FA10SL-4PS](#)
[CT6LA20-19PC](#) [CT6M20-19SS](#) [CT6NSB4-20-8SS](#) [CT6TC14S-6SCAU](#) [CT6TC14S-7PS](#) [6STD15SCT99S40X](#) [6STF09PCM05B70X](#)