

PCBLAYOUT

Specifications:

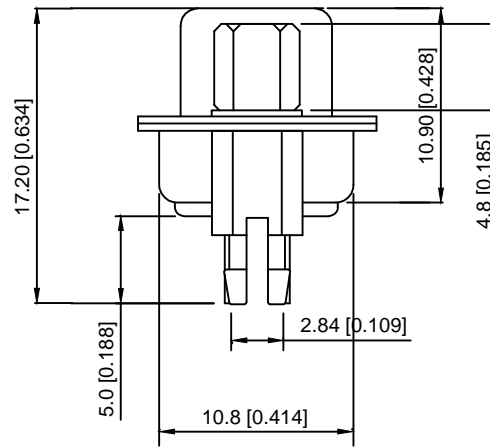
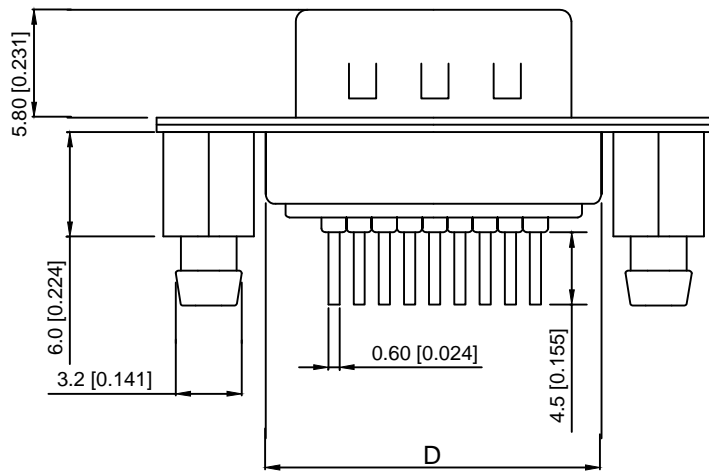
规格:
 Current rating:3A AC/DC
 额定电流: 3A AC/DC
 Withstanding voltage:1000 AC/minute
 耐受电压: ≥1000V AC/分钟
 Temperature range:-25 °C~+105 °C
 温度范围: -55 °C~+105 °C
 Insulation resistance:500MΩMIN
 绝缘电阻: ≥500MΩ
 Contact resistance:25mΩMAN
 接触电阻: ≤25mΩ

Material:

材料:
 Contacts:Brass Gold Plated
 接触: 黄铜镀金
 Insulator:PBT+30 %
 绝缘体: PBT+30 %
 Shell(Frond)Steel NI Plated
 外壳: 镀钢
 Shell (Fead):Steel TIN Plated
 外壳: 钢镀锡

MECHANIAL CHATACTERICS:

插拔力:
 Contact Insertion force:300gfMAX
 插入力:最大300gf
 Contact Separation Force:25gf MIN
 拔出力: 最小25gf



9-37P公(插板式)后铆鱼叉螺母+前锁螺丝

X02 XX W X X X 5

① ② ③ ④ ⑤ ⑥ ⑦

- ① Series NO.
- ② Row No.Pin No.XX-09;15;25;37
- ③ Welding Board Angle :W-male
- ④ T: Tradtional C: Car-pin
- ⑤ Planting Categoty: 1:1U 2:2U 3:3U 4:5U 5:15U 6:30U 7:AuSN
- ⑥ B:BLACK W:White BL:Blue Y:Yellow G:Green R:Red
- ⑦ 5:Front lock screw after riveting

NO.POS	A±0.38	B±0.13	C±0.20	D±0.38
9PIN	30.80	24.99	16.92	19.28
15PIN	39.20	33.32	25.25	27.65
25PIN	53.10	47.04	38.96	41.20
37PIN	69.40	63.50	55.42	57.44

DSND	DATE	SCALE: N/A	MODEL TYPE:
DWN	DATE	VIEW:	PART NO.:
CHKD	DATE	UNIT: mm/in	DWG NO.:
APPD	DATE	SIZE: A4	X02XXWXXX5
KXB INDUSTRIAL PRECISION CO.,LIMITED			WEIGHT
			1.0g
			SHEET
			1/1
			REVISION
			A0

MARK	DESCRIPTION	DATE	REVISED	APPROVED	units: mm
Δ X					tolerance:
Δ X					X.X ±0.2mm
Δ X					X.XX ±0.1mm
MARK					X.XXX ±0.05mm
UNSPECIFIED TOLERANCES					

X-ON Electronics

Largest Supplier of Electrical and Electronic Components

Click to view similar products for [D-Sub Standard Connectors](#) category:

Click to view products by [XKB](#) manufacturer:

Other Similar products are found below :

[015-0339-000](#) [015-0341-000](#) [015-0349-000](#) [015-0350-000](#) [015-8544-011](#) [015-8755-001](#) [017041-0005](#) [020419-0104](#) [609-25P](#) [609-9P](#)
[M24308/2-23Z](#) [CT0-24-10SC](#) [CT0-36-3PC](#) [CT0E20-8PS](#) [CT0F16S-1PS](#) [CT0TA16-11SXCA232](#) [CT1E20-19SS](#) [CT2-10SL-3SC](#) [CT2-14S-2PCA34](#) [CT2-18-11PCAU](#) [CT2-22-19SC](#) [CT2-36-5PC](#) [CT6-10SL-3SC](#) [CT6-10SL-4SC](#) [CT6-14S-2SC](#) [CT6-16-12SC](#) [CT6-18-10PSA206](#)
[CT6-18-10PSA232](#) [CT6-18-11PXSA206](#) [CT6-18-11PXSA232](#) [CT6-22-10PS](#) [CT6-24-5PC](#) [CT6-9767-18-8-18-4SS](#) [CT6E14S-5SC](#)
[CT6E14SA7SC](#) [CT6E20-14SS](#) [CT6E22-14PC](#) [CT6E22-14PS](#) [CT6E22-19PS](#) [CT6E22-22PS](#) [CT6E24-10SC](#) [CT6F16S-1SC](#) [CT6FA10SL-4PS](#)
[CT6LA20-19PC](#) [CT6M20-19SS](#) [CT6NSB4-20-8SS](#) [CT6TC14S-6SCAU](#) [CT6TC14S-7PS](#) [6STD15SCT99S40X](#) [6STF09PCM05B70X](#)